



Connells

The Kensington Heathfield
Bletchington Kidlington

The Kensington Heathfield Bletchingdon Kidlington OX5 3DX

For Sale
£230,000



Property Description

The Kensington is a well-designed two bedroom, two bathroom, park home, available in either 40ft x 20ft or 50ft x 22ft model, set in a picturesque rural location in Heathfield. Spacious and detailed to a high standard throughout the property.

From the entrance you will see the kitchen diner, complete with central island and built in appliances, with an array of upgrade options available, benefitting from tiled flooring within the kitchen area and carpets, if preferred, within the dining section.

Kitchen Diner

Living Room

Bedroom One

Walk In Wardrobe & Ensuite

Bedroom Two

Family Bathroom

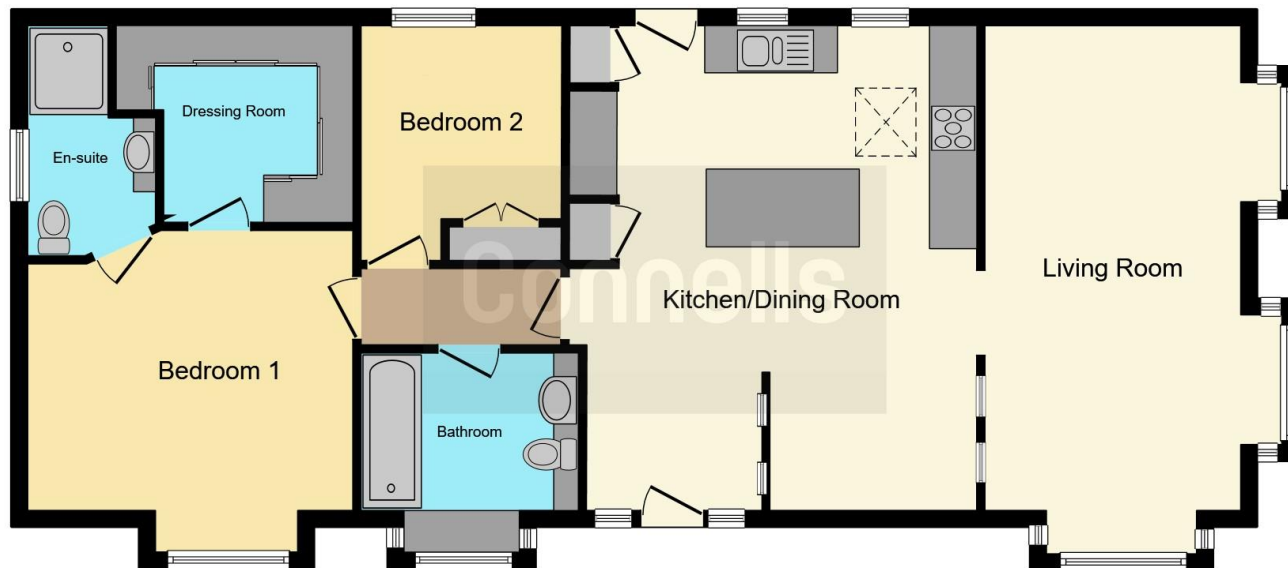
Location

Distance from Heathfield to:
Bicester - 6.7 miles
Oxford - 8.9 miles
Blenheim Palace - 7.1 miles
Islip Train Station - 2.0 miles

Agent Note

Connells advertise and arrange viewings only for this property. Images supplied are of a Kensington model, not actual plot available





This floor plan is for illustrative purposes only. It is not drawn to scale. Any measurements, floor areas (including any total floor area), openings and orientation are approximate. No details are guaranteed, they cannot be relied upon for any purpose and they do not form part of any agreement. No liability is taken for any error, omission or misstatement. A party must rely upon its own inspection(s). Powered by www.focalagent.com

To view this property please contact Connells on

T 01869 244761
E bicester@connells.co.uk

5 Market Square
 BICESTER OX26 6AA

EPC Rating: Exempt
 Council Tax Band: A

Tenure:

check out more properties at connells.co.uk

We are currently awaiting Tenure details. For further information please contact the branch. Please note additional fees could be incurred for items such as leasehold packs.



1. MONEY LAUNDERING REGULATIONS Intending purchasers will be asked to produce identification documentation at a later stage and we would ask for your co-operation in order that there will be no delay in agreeing the sale. 2. These particulars do not constitute part or all of an offer or contract. 3. The measurements indicated are supplied for guidance only and as such must be considered incorrect. Potential buyers are advised to recheck measurements before committing to any expense. 4. We have not tested any apparatus, equipment, fixtures, fittings or services and it is in the buyers interest to check the working condition of any appliances.

Connells Residential is registered in England and Wales under company number 1489613, Registered Office is Cumbria House, 16-20 Hockliffe Street, Leighton Buzzard, Bedfordshire, LU7 1GN. VAT Registration Number is 500 2481 05.

See all our properties at www.connells.co.uk | www.rightmove.co.uk | www.zoopla.co.uk

Property Ref: BIC309576 - 0006