



HUNTERS[®]
HERE TO GET *you* THERE

3 Brookview Walk, Bristol, BS13 7QS

3 Brookview Walk, Bristol, BS13 7QS

£325,000

Offered to the market with NO ONWARD CHAIN. Nestled in the charming cul-de-sac of Brookview Walk, this semi-detached house presents a wonderful opportunity for those looking to create their dream home. With three bedrooms and a well-appointed bathroom, this property is perfect for families or individuals seeking a peaceful retreat.

The heart of the home features a welcoming reception room, ideal for relaxation or entertaining guests. The property also offers beautiful views over the picturesque Manor Wood Valley, allowing you to enjoy the serene landscape from the comfort of your home.

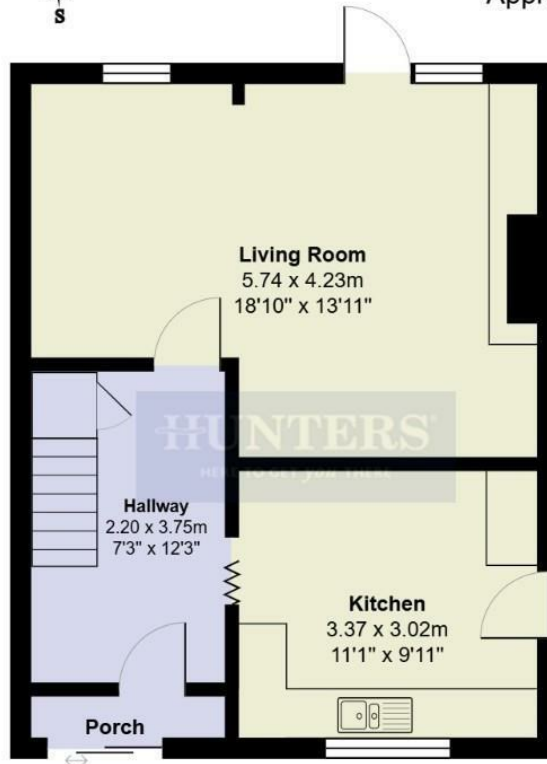
Situated in the popular area of Headley Park, this residence is not only surrounded by natural beauty but also enjoys a strong community atmosphere. The potential to modernise and personalise the space offers a unique chance to make it truly your own.

This property is a brilliant opportunity to secure a home in a sought-after location. Embrace the charm of this delightful house and enjoy all that this lovely area has to offer.

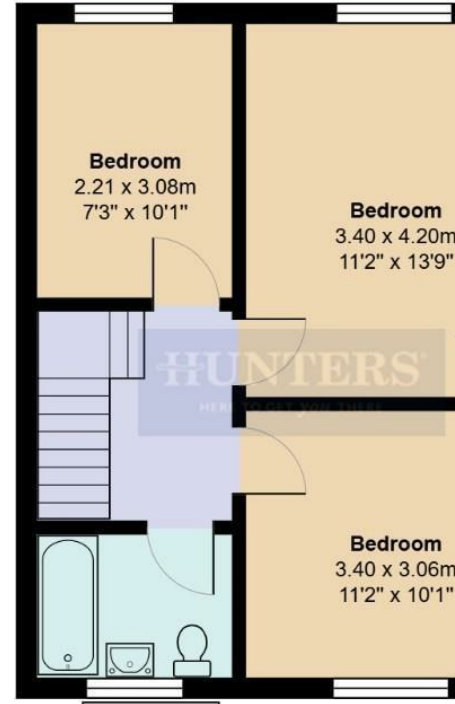
Hunters Bishopsworth 25 Highridge Road, Bristol, BS13 8HJ | 0117 924 4444
bishopsworth@hunters.com | www.hunters.com



Brookview Wall
Approximate Gross Internal Area 85.4 sq m /



Ground Floor
Area: 42.6 m² ... 458 ft²




Bathroom
2.19 x 1.66m
7'2" x 5'5"

First Floor
Area: 42.8 m²



Energy Efficiency Rating

	Current	Potential
<i>Very energy efficient - lower running costs</i>		
(92 plus) A		
(81-91) B		
(69-80) C	70	79
(55-68) D		
(39-54) E		
(21-38) F		
(1-20) G		
<i>Not energy efficient - higher running costs</i>		
England & Wales	EU Directive 2002/91/EC	

These particulars
but no responsibility
constitute an offer
(including central
are advised to sat
unoccupied at an
off/disconnected
approximate. If yo
value of your prop
and marketing ad
offices we can arr
estate agents.



