



Fulham Road, SW6

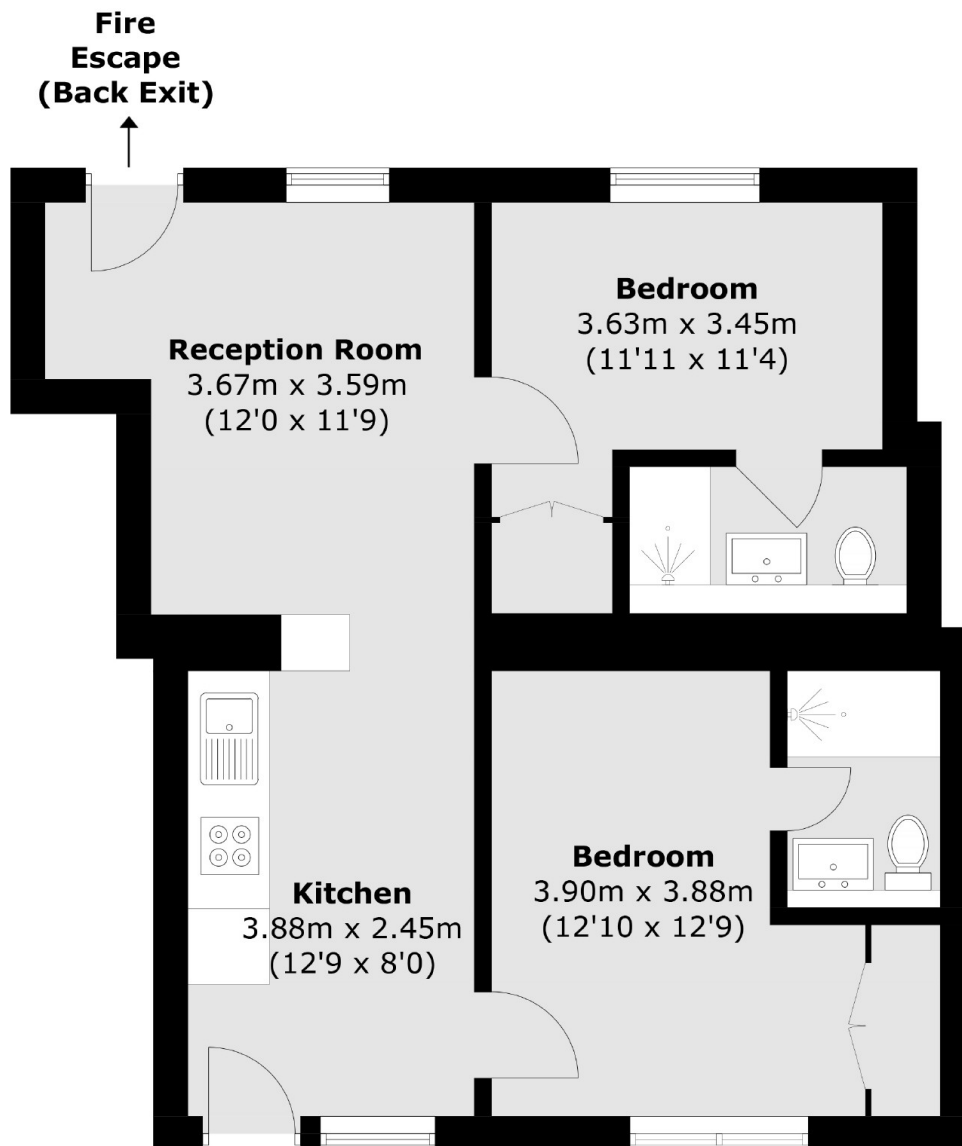
£2,500 Per calendar month

A bright and contemporary apartment located in a prime location. The property offers an open plan kitchen/reception room, two double bedrooms, two bathrooms, wood flooring and access to the communal patio area.

Fulham Road is perfectly located for the green space of Bishops Park and the transport links of both Parsons Green and Putney Bridge.

Features

Fulham Road, London, SW6



Total area (approx.): 53.2 sq. m (572.6 sq. ft)