



Freehold

£325,000

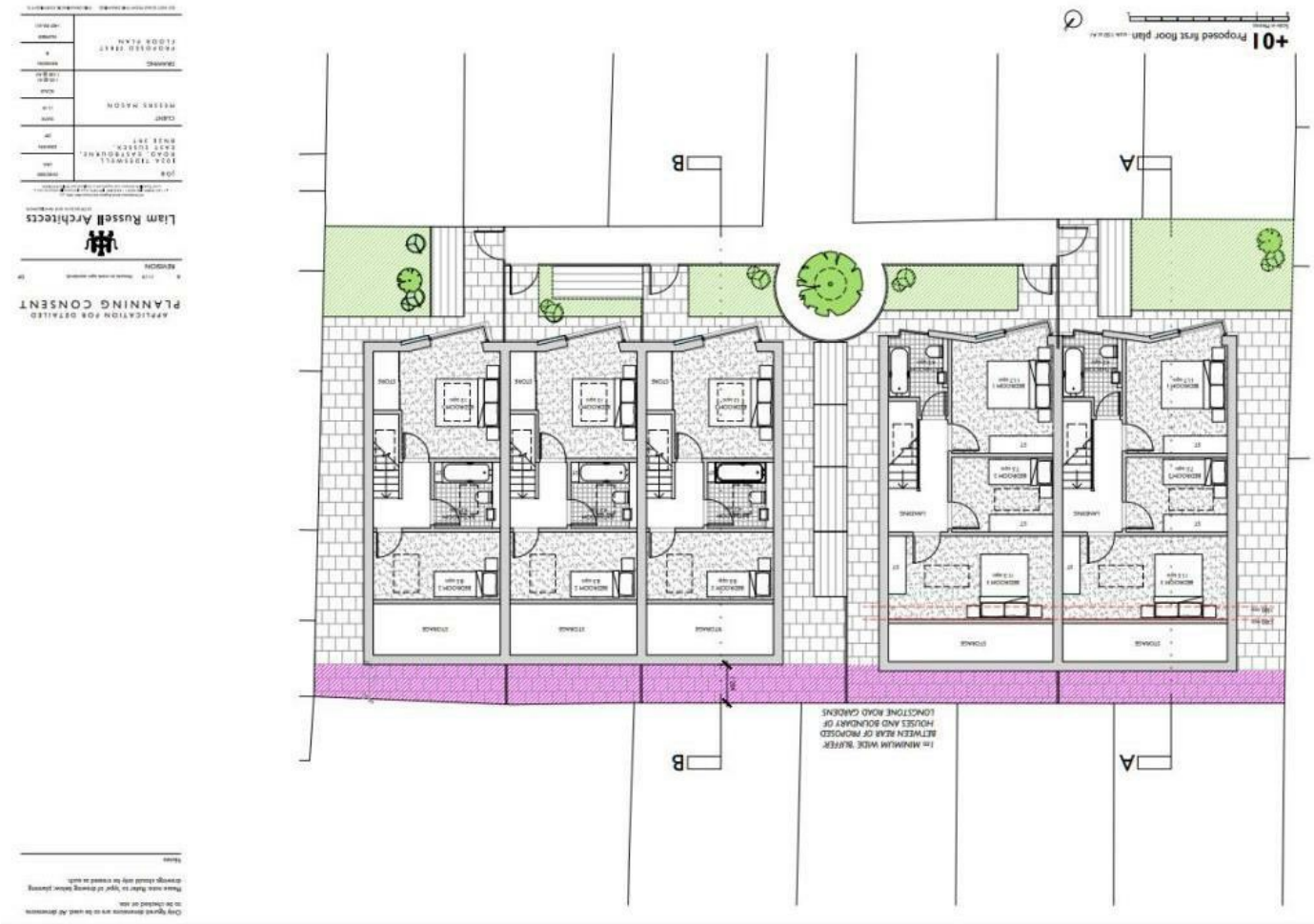
- 3 null BEDROOM
- 3 null RECEPTION
- 3 null BATHROOM
- 1 GARAGE

Tideswell Road, Eastbourne



- Development Opportunity
- Planning Permission Granted
- ECO Homes
- Prime Eastbourne Location
- 3 x 2 Bedroom Houses
- 2 x 3 Bedroom Houses

Energy Efficiency Rating	
Current	Potential
England & Wales	
EU Directive 2002/91/EC	
Not energy efficient - higher running costs	
G	F
F	E
E	D
D	C
C	B
B	A
A	
Very energy efficient - lower running costs	



48 High Street | Polegate | East Sussex | BN26 6AG
Tel: 01323 483348
www.archerandpartners.com

You may download, store and use the material for your own personal use and research. You may not republish, retransmit, redistribute or otherwise make the material available to any party or make the same available in hard copy or in any other media without the website owner's express prior written consent. The website owner's copyright must remain on all reproductions of material taken from this website.

Tideswell Road, Eastbourne

DESCRIPTION

Archer and Partners are delighted to present an exceptional development opportunity in the heart of Eastbourne. This site, currently comprising a building slated for demolition, benefits from approved planning permission for the construction of 5 single-family dwellings, offering a mix of modern, thoughtfully designed home. Planning Application Reference: 240503 (Valid from 05/09/2024)

Potential For Enhanced Planning for 8 x 1 bed flats and 2 x 2 bed flats STPP
Site Overview: Total Plot Size: Approximately 462sqm (excluding access from Tideswell Road)
Proposed Development: Demolition of the existing structure and erection of five dwellings, catering to diverse housing needs in a sought-after area.
Proposed Dwellings:
The approved design emphasizes functionality and comfort, providing a blend of two- and three-bedroom homes:
3-Bedroom Homes (5-Person): Generous living spaces of 96sqm each, ideal for families.
2-Bedroom Homes (3-Person): Well-planned homes of 71sqm each, perfect for smaller households or professionals.
Community Infrastructure Levy (CIL):
The development is subject to a Community Infrastructure Levy (CIL) of £15,000.
The property is situated in a prime location, offering easy access to Eastbourne's amenities, transport links, and local attractions.
This is a rare opportunity for investors or developers to create a high-quality residential scheme in a thriving market.
For more information or to schedule a viewing, please contact us today.



Tideswell Road, Eastbourne

3 x 2 Bedroom Houses

2 x 3 Bedroom Houses

Potential For Enhanced Planning

Modern ECO Home