

## Cranhurst Road, NW2

£1,384 Per week

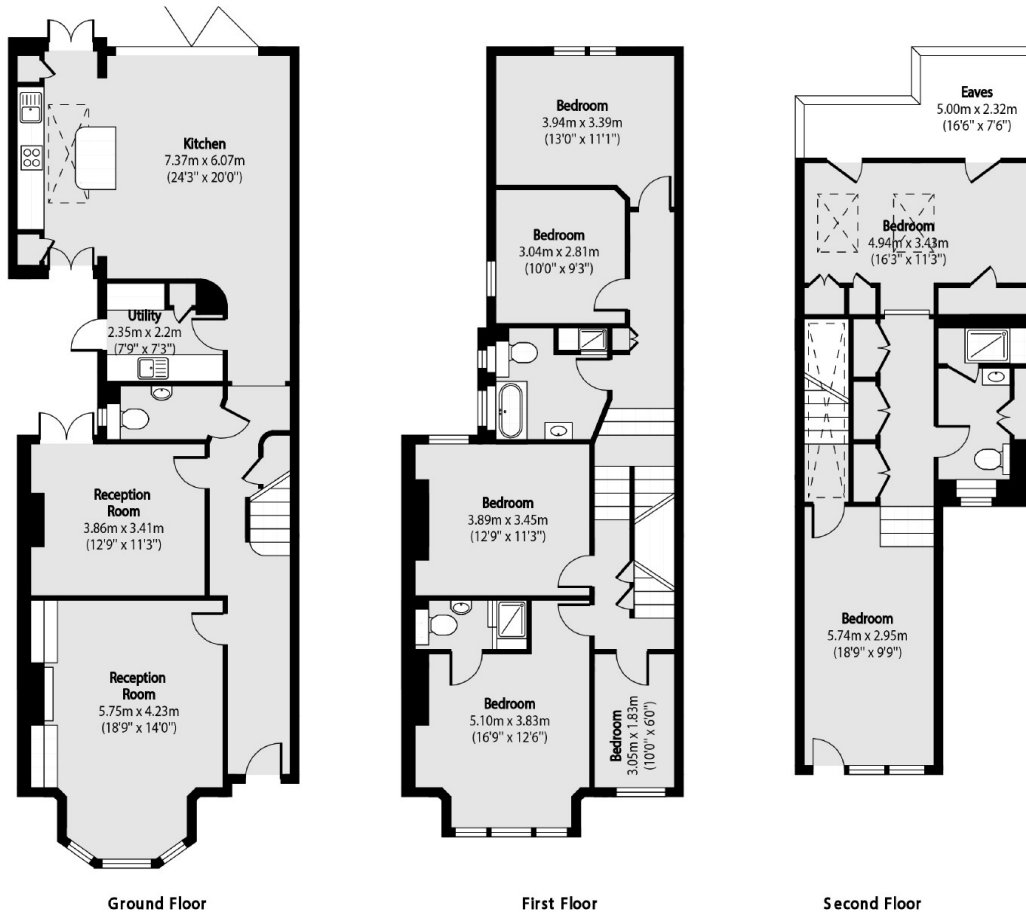
This six bedroom, three bathroom family home is ideally situated in the heart of Willesden Green. The house is semi-detached with two reception rooms, an open plan living area with a modern integrated kitchen, and a large private garden with a well-kept lawn and decked area.

Cranhurst Road is ideally situated close to many local amenities, delis, shops, and cafés. Gladstone Park is moments away, and you also have good transport links to the city and easy motorway access. Willesden Green station and Cricklewood Thameslink are also near.

### Features

- Six Bedrooms
- Three Bathroom
- Two Receptions
- Integrated Family Kitchen
- Period Features
- Private Garden

# Cranhurst Road, London, NW2



Total area (approx): 229.04 sq m (2465 sq. ft)