



## Bolton Road, NW8

£553 Per week

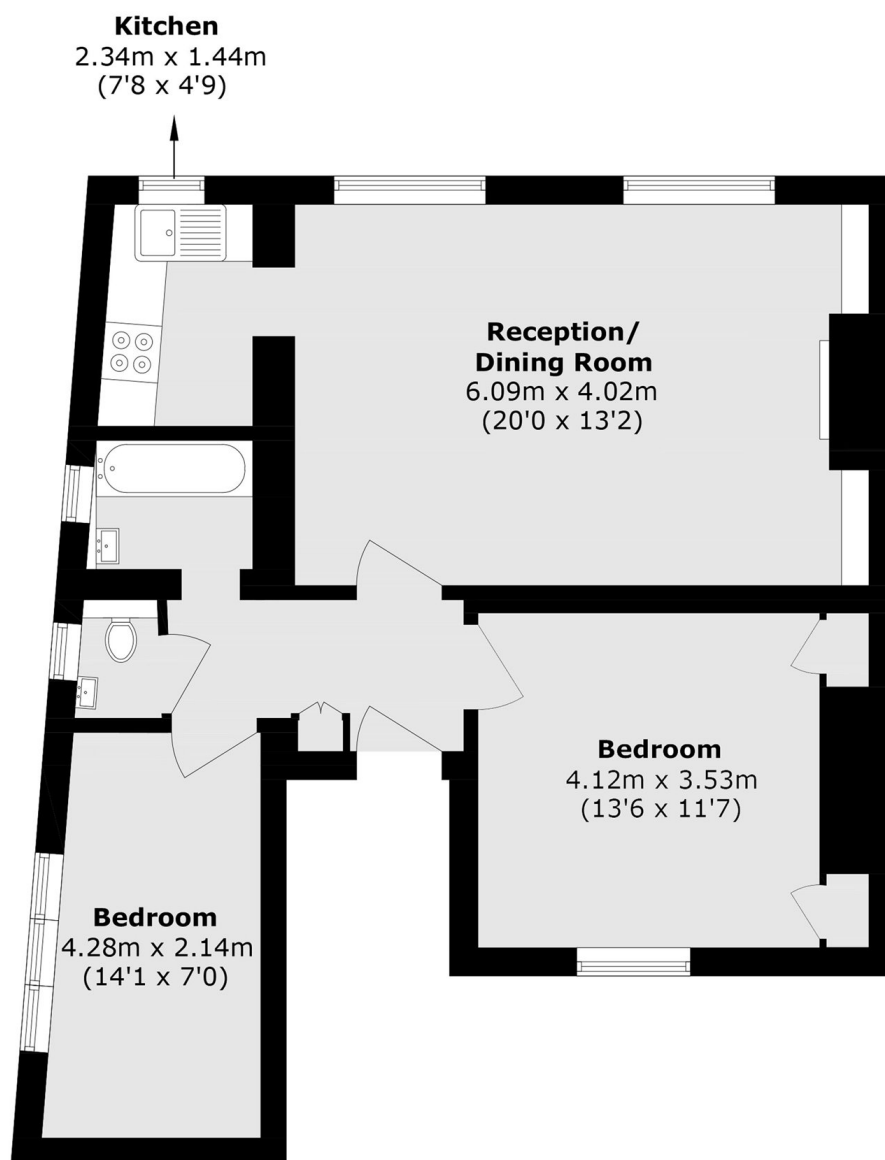
A beautifully presented two-bedroom apartment set within a charming period building, situated just off Boundary Road. It features a spacious living room with a fireplace, wooden floors, sash windows and the principle bedroom with an exposed brick wall.

Bolton Road is located close to local shops, cafés and restaurants on Boundary Road and both St Johns Wood Underground and South Hampstead Underground Station are both close by

### Features

- Two Bedroom
- Top Floor Flat
- Spacious Reception
- Wooden Floors
- Good Location
- Period Features

# Bolton Road, London, NW8



Total area (approx.): 63.7 sq. m (685.6 sq. ft)