



**SIBLEY PARES**

CHARTERED SURVEYORS & ESTATE AGENTS

**Durham Close**

Maidstone, Kent, ME15 8DS

**Guide Price £200,000 to £220,000**



# Durham Close

Maidstone, Kent, ME15 8DS

## Key Features

- Well Presented Two Bedroom Maisonette
- Private Rear Garden With Additional Land
- Modern Fitted Kitchen
- Two Double Bedrooms
- Mote Park on your Doorstep
- Easy Reach of Maidstone Town Centre

## Description

Situated on the edge of the picturesque grounds of Mote Park in Maidstone is this well presented two double bedroom maisonette, with the added benefit of a private rear garden and additional land.

This spacious property comprises entrance porch, stair case leading to the entrance hall with large storage cupboard and balcony, living room, dual aspect modern fitted kitchen with oven and hob, two double bedrooms and modern fully tiled bathroom with shower over bath.

The property also benefits from a great size private rear garden with a large shed and patio area with the remainder laid to lawn, leading to a good size second garden area laid to lawn, ample on street parking, gas central heating and double glazing throughout.

### Lease Details

Length: 125 years from 21 October 1991

Service Charge (inc Ground Rent): £609.50pa



**SIBLEY PARES**  
CHARTERED SURVEYORS & ESTATE AGENTS



# Durham Close

Maidstone, Kent, ME15 8DS

## Location

Set a stone throw away from the beautiful Mote Park, with its scenic walks around the lake and Maidstone Leisure Centre, which means that you are within easy reach of plenty to do.

Maidstone Town Centre is within easy reach and you'll find a range of local amenities, schools, and parks within easy reach. Commuters will appreciate the excellent transport links, with Maidstone East and Maidstone West train stations nearby, providing direct routes to London and other major cities.

■ EPC Rating C

■ Council Tax Band B

■ Maidstone Borough Council

■ For Broadband Speed Refer to  
Ofcom Website

For all Viewings and Enquiries contact:



**Mr Mitchell Bourner MNAEA MARLA**  
mitchell.bourner@sibleypares.co.uk



**Mr Marcus Monger**  
Marcus.monger@sibleypares.co.uk



**SIBLEY PARES**

CHARTERED SURVEYORS & ESTATE AGENTS

**01622 673086**

sibleypares.co.uk



**SIBLEY PARES**

CHARTERED SURVEYORS & ESTATE AGENTS

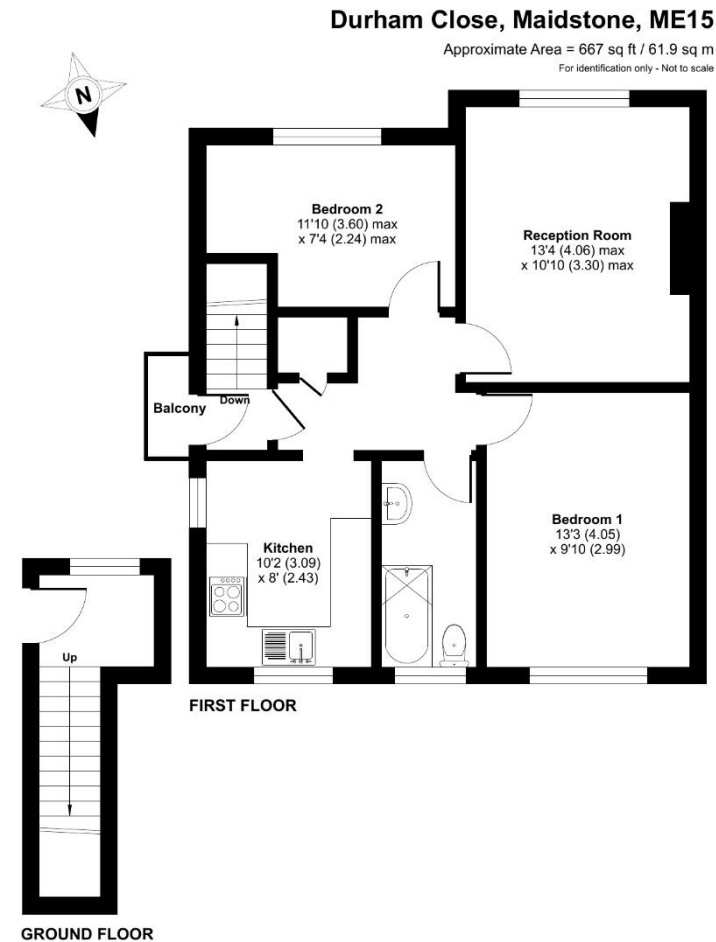








# Floorplan and Dimensions



ⓘ Floor plan produced in accordance with RICS Property Measurement 2nd Edition, Incorporating International Property Measurement Standards (IPMS2 Residential). © nichecom 2025. Produced for Sibley Pares Estate Agents. REF: 1305549

NOTE: Rental, prices or any other charges are inclusive of VAT unless otherwise stated.  
MISREPRESENTATION ACT 1967. These particulars are believed to be correct, their accuracy cannot be guaranteed and are expressly excluded from any other contract. Any intending purchaser must satisfy himself by inspection or otherwise as to the correctness of each of the statements contained in these particulars. No fittings, appliances or services mentioned have been tested by Sibley Pares. Please note that In accordance with Money Laundering Regulations, we are now required to obtain proof of identity for purchasers.



**1 Ashford Road, Maidstone, Kent ME14 5BJ**  
**sibleypares.co.uk | Maidstone (01622) 673086 | Ashford (01233) 629281**

Partners: Sarah Raggett, BSc (Hons) MRICS | Phillip Hubbard, BA (Hons) MRICS  
Sibley Pares Chartered Surveyors is a trading name of Sibley Pares LLP  
Registered in England and Wales No: OC400776. | Registered as above. | VAT Reg No: 218 5130 30.