

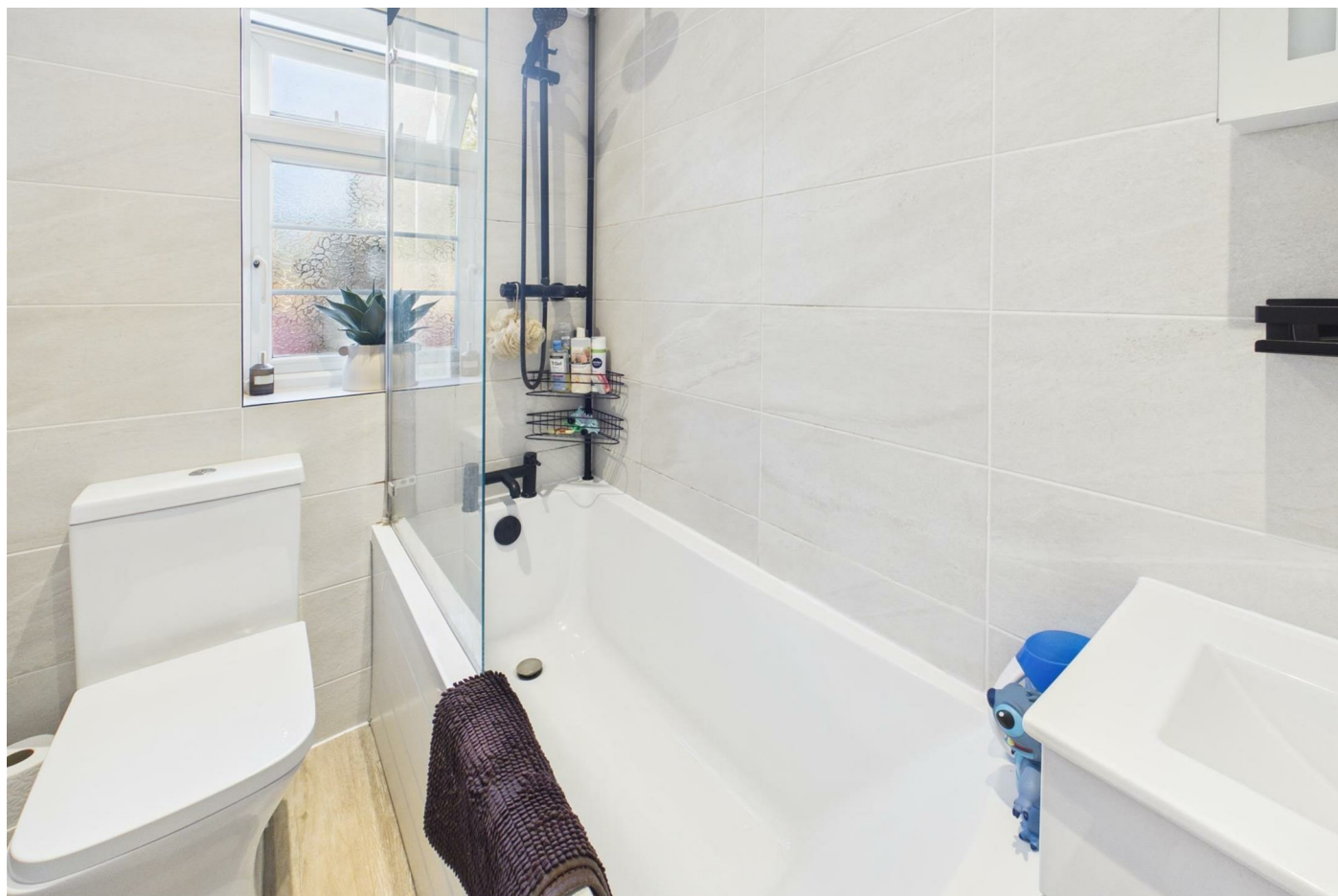


Northdown Close, Ruislip, HA4 6JY



gibsonhoney

NO UPPER CHAIN. We are delighted to present to the market this spacious GROUND floor maisonette with direct access to rear private garden. Making an ideal first time purchase or investment opportunity this property briefly comprises: Spacious lounge, good size fitted kitchen and bathroom suite. Other benefits include, TWO DOUBLE BEDROOMS, double glazing, gas central heating, long lease and as well as the rear garden, you also have the front garden. This most desirable property is conveniently situated for Ruislip and Ruislip Manors extensive High Streets and Ruislip Gardens amenities including rail links(Metropolitan/Piccadilly/Central), restaurants and bus routes. The A40/M40 are within striking distance offering swift and easy access to both Central London, the Home Counties and Heathrow. Local schools include Sacred Heart and Ruislip Gardens Primary which again are a short walk away.



ENTRANCE HALL

Front aspect door, radiator, doors to:

LIVING ROOM

Rear aspect double glazed window, radiator.

BEDROOM ONE

Front aspect double glazed window, radiator.

BEDROOM TWO

Front aspect double glazed window, radiator.

KITCHEN

Rear aspect double glazed door to rear garden, side aspect double glazed frosted window, range of base and eye level units, double sink with mixer taps, gas hob and electric oven with extractor hood over, spaces for appliances.

BATHROOM

Rear aspect double glazed frosted window, low level wc, heated towel rail, vanity unit incorporating wash hand basin, panel enclosed bath with shower over.

FRONT GARDEN

Mainly laid to lawn.

REAR GARDEN

Patio area, panel enclosed fence.

LEASE

Leasehold - In excess of 160 years.

N.B. WE RECOMMEND YOUR SOLICITOR VERIFIES THIS BEFORE EXCHANGE OF CONTRACTS.

OUTGOINGS

Ground Rent £100 per annum, Building Insurance £210, no service charge.

N.B. WE RECOMMEND YOUR SOLICITOR VERIFIES THIS BEFORE EXCHANGE OF CONTRACTS.

COUNCIL TAX

London Borough of Hillingdon - Band C - £1,818.19

N.B. WE RECOMMEND YOUR SOLICITOR VERIFIES THIS BEFORE EXCHANGE OF CONTRACTS.

DISTANCE TO STATIONS

Ruislip (0.4 miles) - Metropolitan/Piccadilly
Ruislip Gardens (0.5 miles) - Central
West Ruislip (0.9 miles) - Central/Chiltern Railways



92 High Street, Ruislip, Middlesex, HA4 8LS

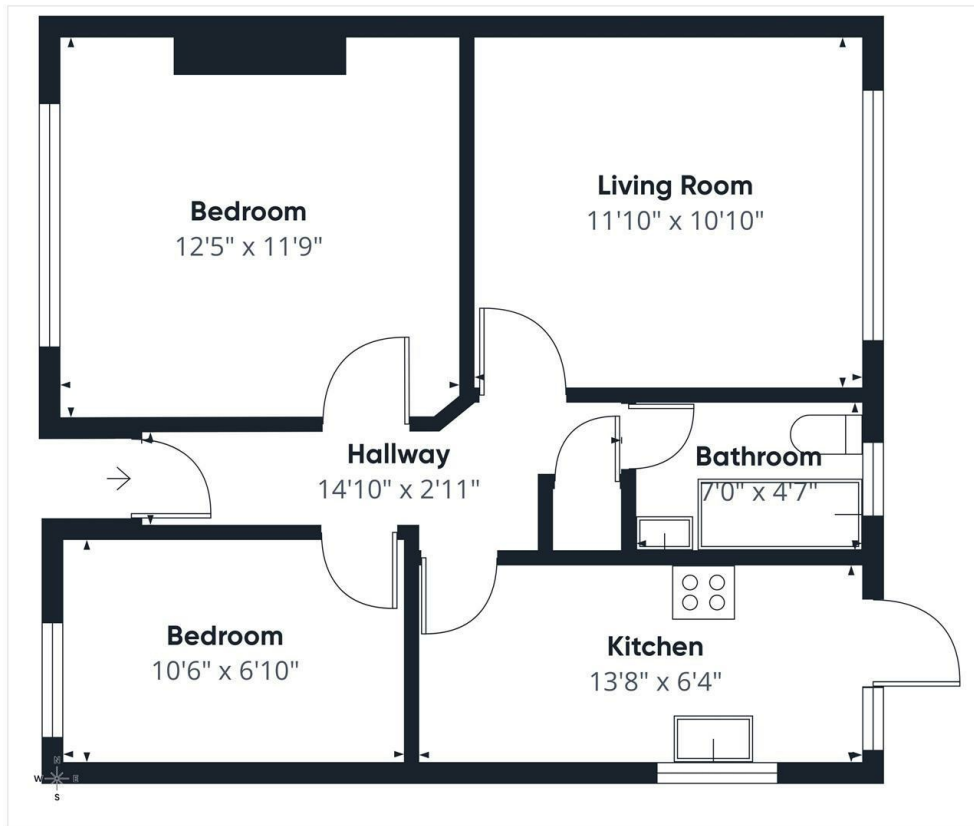
T: 01895 677766

sales@gibsonhoney.co.uk

www.gibsonhoney.co.uk



gibsonhoney




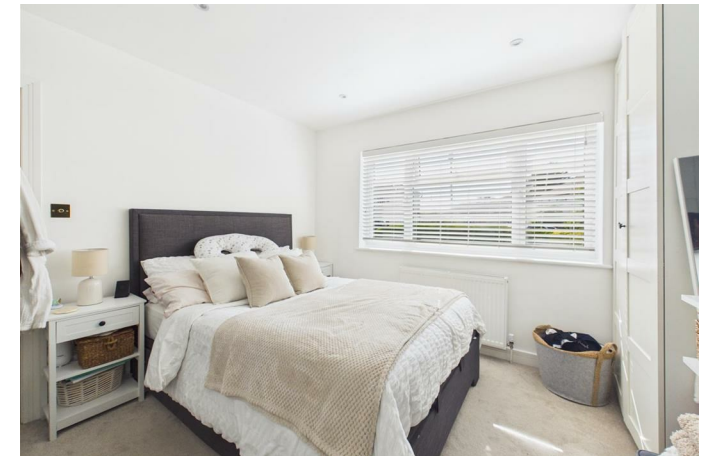
Approximate total area^a
514 ft²

(1) Excluding balconies and terraces

Calculations reference the RICS IPMS 3C standard. Measurements are approximate and not to scale. This floor plan is intended for illustration only.

GIRAFFE360

Energy Efficiency Rating		
	Current	Potential
<i>Very energy efficient - lower running costs</i>		
(92 plus) A		
(81-91) B		
(69-80) C	70	78
(55-68) D		
(39-54) E		
(21-38) F		
(1-20) G		
<i>Not energy efficient - higher running costs</i>		
England & Wales	EU Directive 2002/91/EC 	



You may download, store and use the material for your own personal use and research. You may not republish, retransmit, redistribute or otherwise make the material available to any party or make the same available on any website. These particulars, whilst believed to be accurate are set out as a general outline only for guidance and do not constitute any part of an offer or contract. Intending purchasers should not rely on them as statements or representation of fact, but must satisfy themselves by inspection or otherwise as to their accuracy. No person in this firm's employment has the authority to make or give any representation or warranty in respect of the property.