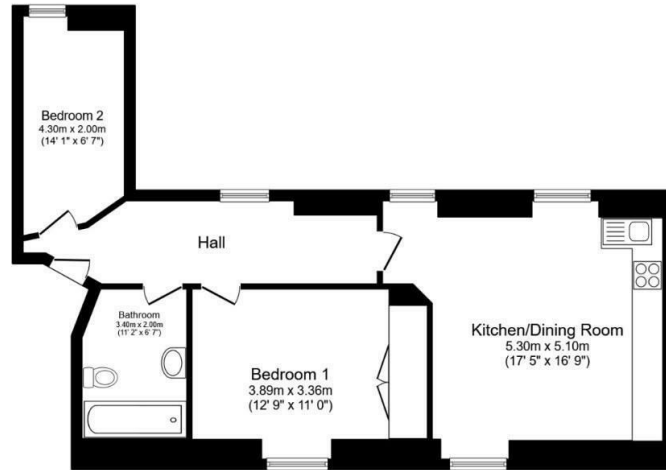


PER MONTH

£1,800 Per month  
Oakleigh Road North  
London, N20 0RX

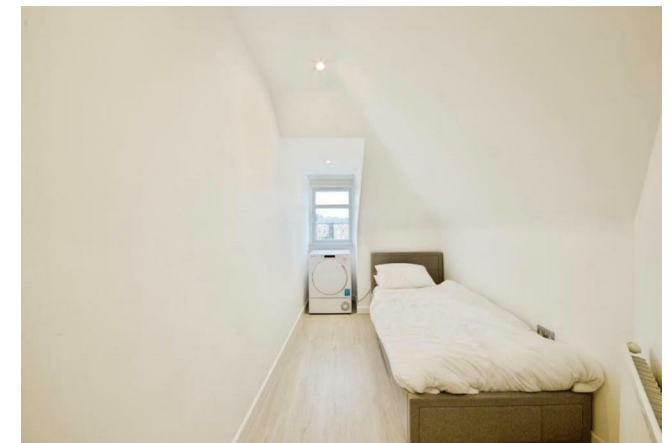
EPC RATING: C COUNCIL TAX BAND: C



Third Floor


Total floor area 66.8 m<sup>2</sup> (719 sq.ft.) approx

This floor plan is for illustrative purposes only. It is not drawn to scale. Any measurements, floor areas (including any total floor area), openings and orientation are approximate. No details are guaranteed, they cannot be relied upon for any purpose and they do not form part of any agreement. No liability is taken for any error, omission or misstatement. A party must rely upon its own inspection(s). Powered by www.focalagent.com



Energy Efficiency Rating		Current	Potential
Very energy efficient - lower running costs			
(92 plus)	A		
(81-91)	B		
(69-80)	C		
(55-68)	D		
(39-54)	E		
(21-38)	F		
(1-20)	G		
Not energy efficient - higher running costs			
England & Wales		77	
		EU Directive 2002/91/EC	

Agents Note: Whilst every care has been taken to prepare these particulars, they are for guidance purposes only. All measurements are approximate and are for general guidance purposes only and whilst every care has been taken to ensure their accuracy, they should not be relied upon and potential buyers/tenants are advised to recheck the measurements.



**Christopher Mark**  
ESTATE AGENTS

OFFICE ADDRESS

25 Heddon Court Parade  
London  
EN4 0DB

OFFICE DETAILS

02033 690989  
Hello@christophermark.co.uk