

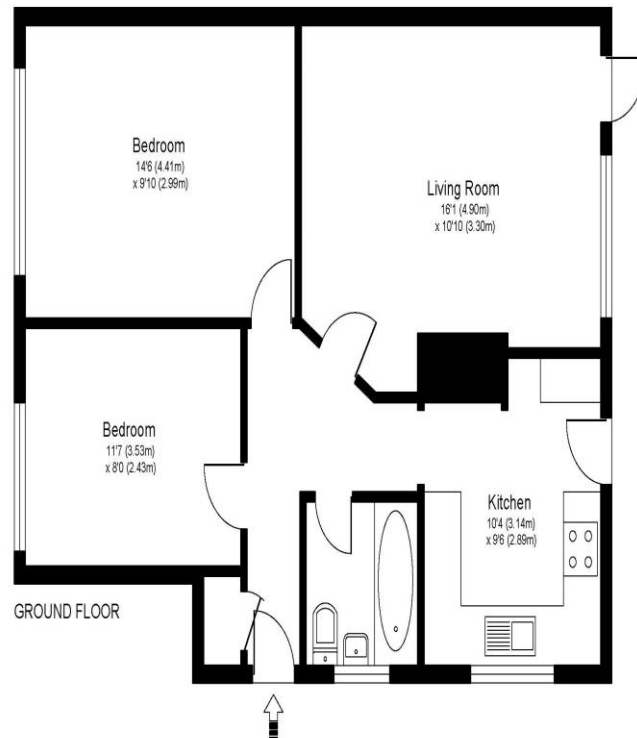


15 Brunswick Close Walton On Thames Surrey KT12 3JJ

£1550pcm + Initial deposit



BURNSWICK CLOSE, KT12



Approximate Gross Internal Floor Area: 59 m sq / 635 sq ft

Whilst every attempt has been made to ensure the accuracy of the floor plan contained here, measurements of doors, windows and rooms are approximate and no responsibility is taken for any error, omission or misstatements. These plans are not to scale and are for representation purposes only as defined by RICS Code of Measuring Practice and should be used as such by any prospective purchaser. Specifically no guarantee is given on total square footage of the property if quoted on this plan. Any figure given is for initial guidance only and should not be relied on as a basis of valuation.

A ground floor two-bedroom maisonette with private rear garden and garage This home is in a popular cul de sac situated off the popular Rydens Avenue which is within 0.7 miles of Walton station. Internally the property is well presented with a modern bathroom and kitchen, there are two double bedrooms and an essential understairs cupboard for storage. Externally you have a pretty rear garden with astro turn and decking plus a outside shed currently kitted out to give extra utility space. There is also a small front garden, street parking and you have a garage close by for additional storage needs. Available unfurnished from 14th March 2026. EPC Rating C.



AGENTS NOTES: These details do not constitute any part of an offer or contract. In issuing them we do not have any authority to give any warranty or representation whatsoever in respect of this property. These details are provided without any responsibility on our part or the part of the vendors. No statements in these details are to be relied upon as representations of fact and purchasers should satisfy themselves by inspection or otherwise as to the accuracy of the statements contained therein.

Equipment: We have not tested the equipment or central heating system mentioned in these particulars and purchasers are advised to satisfy themselves as to their working order and condition.

Measurements: Great care is taken when measuring but measurements should not be relied upon for ordering carpets, equipment, etc.