



JULES MIDDLETON

exp[®] UK

@ jules.middleton@exp.uk.com

🌐 julesmiddleton.exp.uk.com

📞 07539 429 451

The Ford, Little Hadham, Ware, SG11 2AX

Guide Price £1,325,000

5 3 2

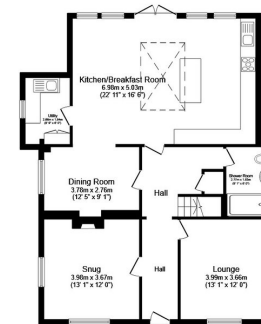


- Rarely available Victorian residence, extensively refurbished throughout.
- A stunning spacious open-plan kitchen with a timeless design, centred around a five burner hob.
- Five double bedrooms complemented by two shower rooms and one village on.
- Private dedicated parking for three cars.
- In excess of 2,300 sq. ft. of accommodation set over three storeys.
- Two additional reception rooms, one with fully functioning fireplace.
- Generous west-facing garden for endless sunsets.
- Commuter stations and excellent schools nearby.
- Please quote JM0792 when enquiring.

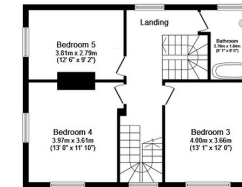




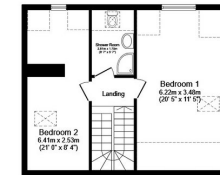
An elegant and spacious Victorian home brimming with character, perfectly positioned in the idyllic village of Little Hadham.



Ground Floor
Floor area 105.3 sq.m. (1,133 sq.ft.)



First Floor
Floor area 62.8 sq.m. (676 sq.ft.)



Second Floor
Floor area 50.3 sq.m. (542 sq.ft.)

Total floor area: 218.4 sq.m. (2,351 sq.ft.)

This floor plan is for illustrative purposes only. It is not drawn to scale. Any measurements, floor areas (including any total floor area), openings and orientations are approximate. No details are guaranteed, they cannot be relied upon for any purpose and do not form any part of any agreement. No liability is taken for any error, omission or misstatement. A party must rely upon its own inspection(s). Powered by www.Propertybox.io

