



ROSEBERY
VILLAS

OVER 60?

Secure this property
for up to **59% less!**

Guide Price
£350,000

Freehold

3x  1x  2x 

**Christchurch Road,
Ashford, Kent, TN23**

Wards
Helping you move forwards



Main features

- Immaculately presented
- Feature fireplaces and full of character
- Large rear garden
- Lounge and separate dining room
- Close to town centre and Victoria Park
- Gas central heating
- Brick built storage shed/gym

Accommodation

SPLIT LEVEL GROUND FLOOR

Entrance Hall

Lounge: 11'3 x 10'9 (3.43m x 3.28m)

Dining Room: 12'2 x 10'8 (3.71m x 3.25m)

Kitchen: 13'8 x 7'8 (4.17m x 2.34m)

SPLIT LEVEL FIRST FLOOR

Landing

Bedroom 1 : 13'2 x 11'3 (4.02m x 3.43m)

Bedroom 2 : 12'9 x 8'2 (3.89m x 2.49m)

Bathroom

Bedroom 3 : 8'6 x 6'2 (2.59m x 1.88m)

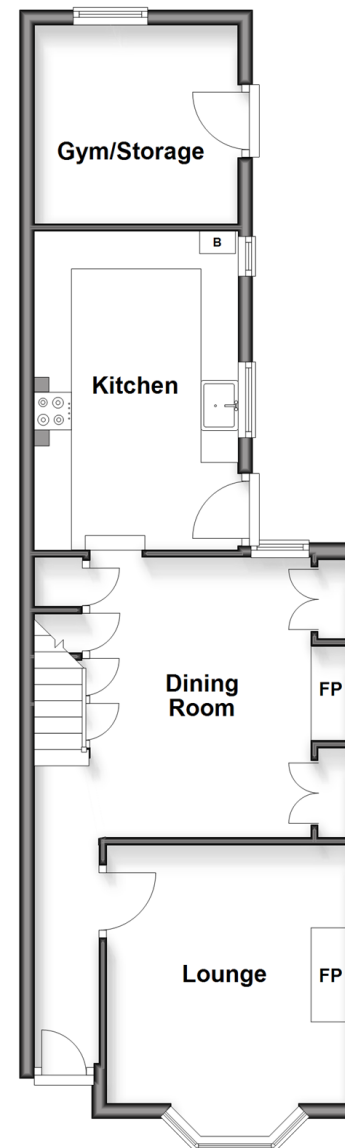
OUTSIDE

Front and Rear Gardens

Gym/Storage

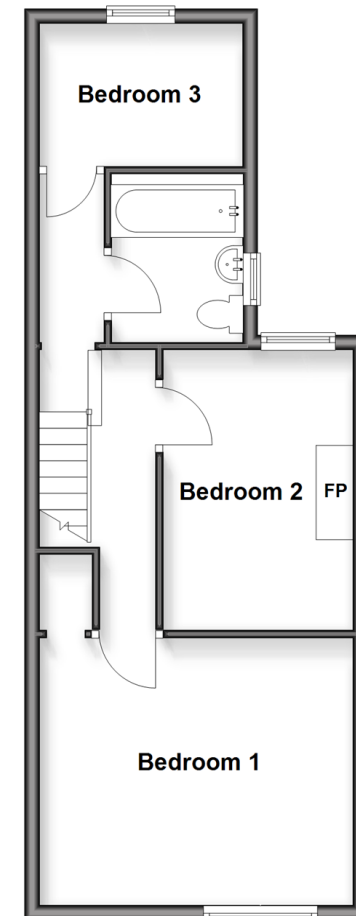
Split Level Ground Floor

Approx. 48.5 sq. metres (521.8 sq. feet)



Split Level First Floor

Approx. 43.5 sq. metres (467.9 sq. feet)



Call Ashford - 01233 639531 ■ wardsof Kent.co.uk

- Legal advice should be taken to verify fixtures/fittings, planning, alterations and/or lease details
- Appliances & services are untested, dimensions are approximate and floor plans are not to scale
- Through a Homewise Home For Life Plan people aged 60+ can secure this property for up to 59% less, by purchasing a Lifetime Lease



12243513/20260122/TT/JRB