

5 Lime Court Grove Road, Churchdown, Gloucester, Gloucestershire,

GL2 2NW
£850 PCM

TO LET



- Available from 20/4/2026
- Open Plan Lounge Kitchen
- Integrated Appliances
- Double Bedroom
- Shower Room
- Gas Central Heating
- Communal Gardens
- Allocated parking
- EPC C/ Council Tax A
- Security Deposit £980.00

THE PROPERTY

Chosen Estate agents present this good sized one bedroom ground floor flat in Lime Court just off Grove Road in Churchdown and close to local amenities.

The property comprises of communal hallway, sitting room, kitchen including integrated oven, integrated hob, washing machine and fridge freezer, double bedroom, shower room and gas central heating.

The property benefits from allocated off road parking, bin area and small communal garden.

Sorry NO PETS.

Holding Deposit: £196.00 based on 1 weeks' rent of asking price

Security Deposit: £980.00 based on 5 weeks' rent of asking price

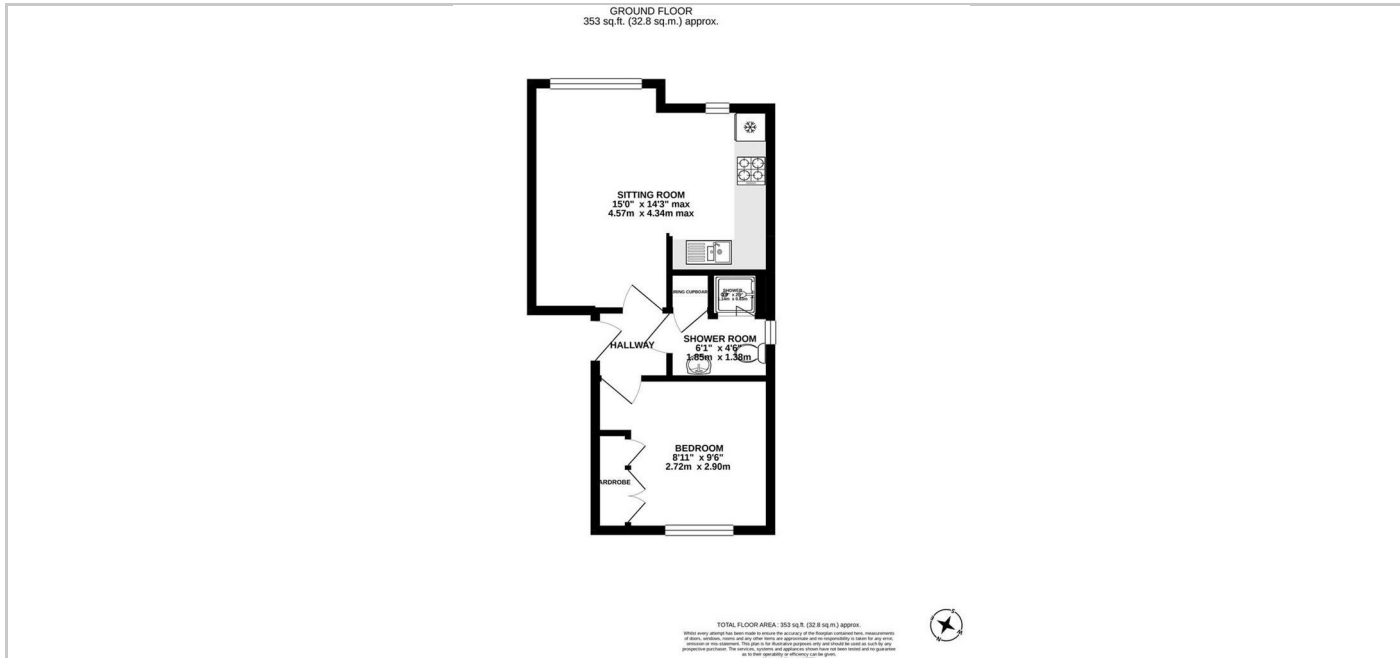
Council Tax band: A Local Authority: Gloucester City Council

EPC Band: C

Electricity supply: Mains Gas Supply: Mains Water supply: Mains Sewerage: Mains

Heating: Gas central heating Mobile phone coverage: i.e EE, Vodaphone, Three, O2

If satisfactory references are not obtained or you withdraw your application any financial loss to Chosen Estate Agents or the Landlord will be deducted from your holding deposit. If you or your guarantor provides information that is inaccurate, false, incomplete, or adverse credit not being disclosed then we may retain your holding deposit and reject your application.



Directions

SITUATION

A one bedroom ground floor apartment available to let in Lime Court, Grove Road, Churchdown, Gloucester, GL3. Contact Farr & Farr 01452 857421