



WESTWOODLEBER
LET US GUIDE YOU HOME

Esdaile Lane, Hoddesdon, EN11 8FD
Offers in the region of £225,000



Esdale Lane, Hoddesdon, EN11 8FD

Westwood Leber are delighted to bring to the market this beautifully presented two-bedroom top-floor retirement apartment, ideally positioned within this well-maintained and highly sought-after development, just a short walk from Hoddesdon Town Centre.

This stylish home offers an exceptional blend of comfort, convenience, and independence, featuring two generous double bedrooms, including a principal suite with a private shower room. The property is designed with ease of living in mind and is fully serviced by a passenger lift to all floors.

The accommodation includes a bright and spacious living area, a contemporary fitted kitchen with integrated appliances, and a modern main bathroom finished with quality fittings throughout.

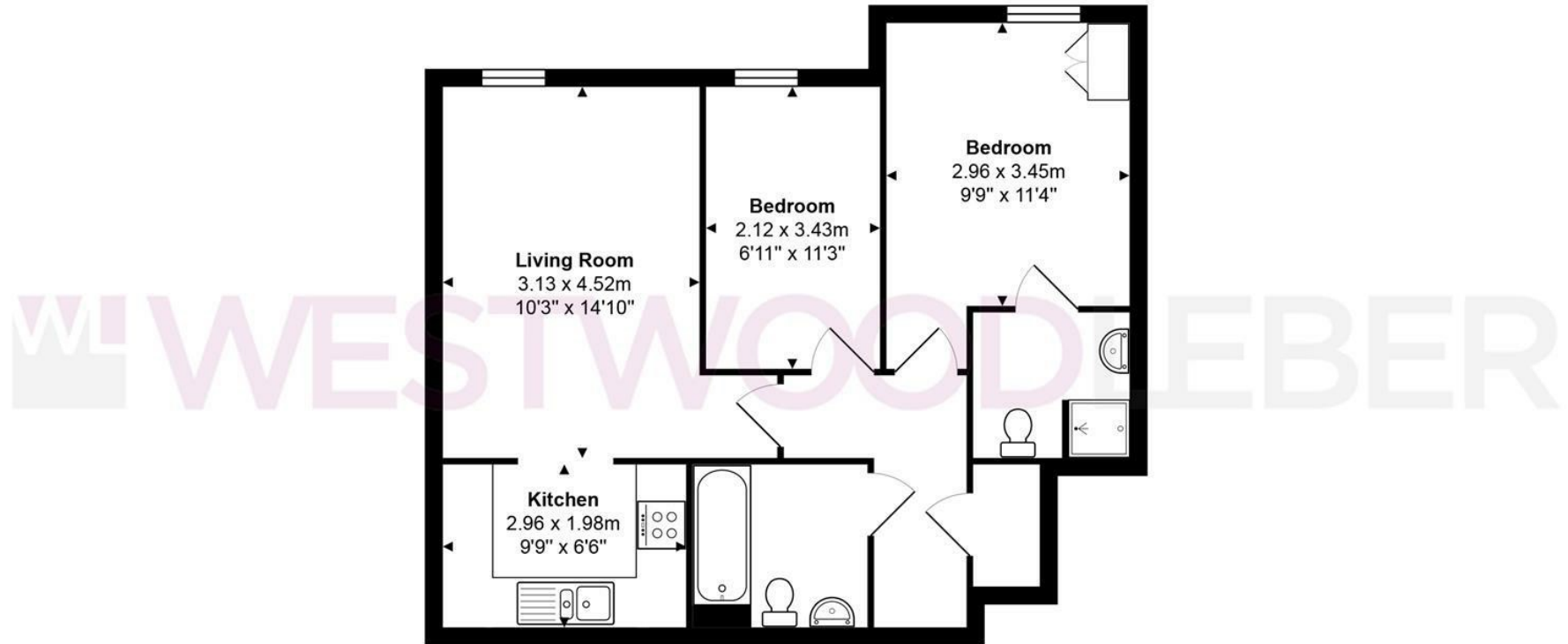
Further benefits include gas central heating, double glazing, and access to a welcoming residents' lounge, a laundry room, and beautifully landscaped communal gardens — ideal for socialising or relaxing outdoors.

Perfectly located close to local shops, cafés, restaurants, and excellent transport links, this property offers a peaceful yet convenient lifestyle. Offered chain-free, this superb apartment provides an excellent opportunity for those seeking a secure and well-connected home in the heart of Hoddesdon.



 WESTWOODLEBER

 WESTWOODLEBER
LET US GUIDE YOU HOME



Total Area: approx. 54.7 m² ... 589 ft²

THE FLOORPLAN IS FOR ILLUSTRATIVE PURPOSES ONLY AND IS NOT TO SCALE.
Measurements and features are approximate and may differ from the actual property. Verify all details independently; no liability is accepted for errors or omissions.

Property marketing provided by www.fotomarketing.co.uk



WESTWOODLEBER



WESTWOODLEBER



WESTWOODLEBER



WESTWOODLEBER

