
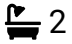





HOMES BY VICTORIA
ESTATE AGENCY

Owl Barn, Tack Farm, Hewell Lane,

Offers In Region Of £660,000

 3  2  1



Prepared to be WOWED! Welcome to Owl Barn - an exceptional detached barn conversion, thoughtfully transformed in 2004, where timeless character meets refined countryside living.

[homesbyvictoria.co.uk](https://www.homesbyvictoria.co.uk)

victoria@homesbyvictoria | 07833 136521

FOR M HOMES MIDLANDS LIMITED trading as Homes By Victoria Company Number: 13688840 VAT no: 470190115



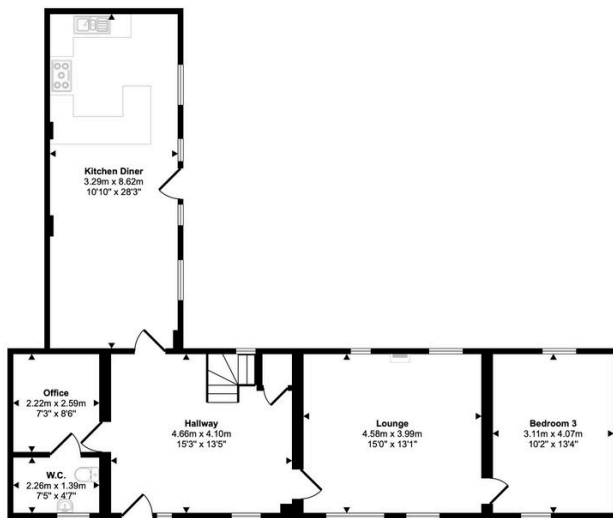
HOMES BY VICTORIA
ESTATE AGENCY



Key Features

- AN IDYLIC SEMI-RURAL LOCATION
- GRAND ENTERANCE HALL
- SPACIOUS LOUNGE
- MODERN SHOWER ROOM
- SPECTACULAR COUNTRYSIDE VIEWS
- CONVERTED DETACHED BARN
- STUNNING KITCHEN DINER
- MASTER BEDROOM WITH EN-SUITE BATHROOM
- BEAUTIFULLY LANDSCAPED GARDEN
- AMPLE SECURE PARKING

Approx Gross Internal Area
156 sq m / 1669 sq ft



Ground Floor
Approx 92 sq m / 994 sq ft

□ Doors are head height below 1.5m



First Floor
Approx 63 sq m / 675 sq ft

This floorplan is only for illustrative purposes and is not to scale. Measurements of rooms, doors, windows, and any items are approximate and no responsibility is taken for any error, omission or mis-statement. Items of items such as bathroom suites are representations only and may not look like the real items. Made with Made Snappy 360.