

Colin Dean Residential

in partnership with Dexters



Avondale Road, HA3

£2,600 pcm

This large four bedroom Semi Detached house has been newly refurbished throughout with a brand-new kitchen, modern integrated appliances, a spacious reception room and large family bathroom, as well as an additional Ensuite bathroom. With its own private garden, this property would make a perfect home for a family

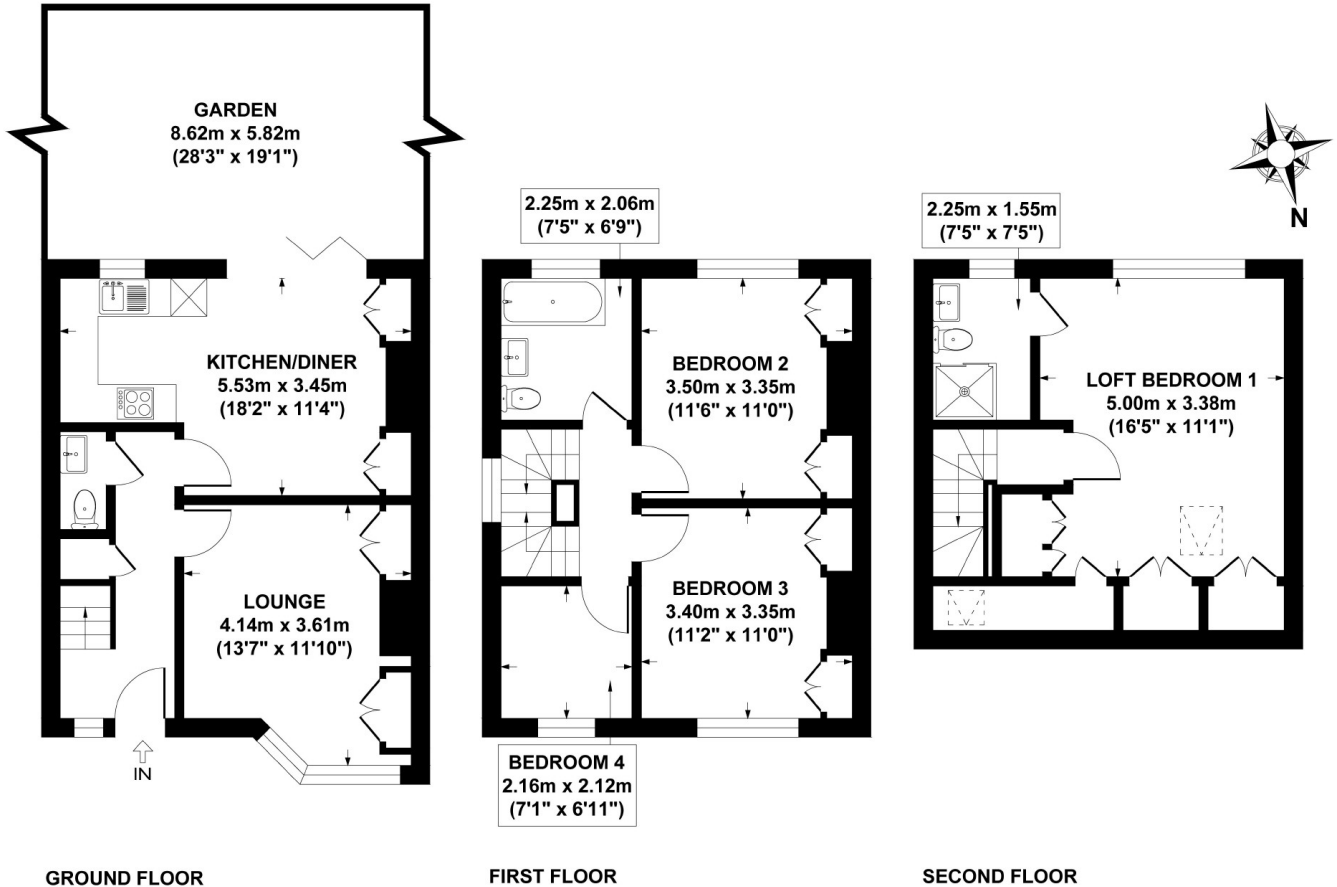
Energy Rating: D.

The property is conveniently situated nearby local shops, bus stops and popular schools Harrow & Wealdstone Station (Bakerloo and Overground Line), is approximately 0.6 Miles from

- Semi-Detached Home • Four Bedrooms • Two Bathrooms •
- Modern Kitchen • Private Garden • Off Street Parking •

Colin Dean Residential

in partnership with Dexters



APPROX GROSS INTERNAL FLOOR AREA 1195 SQ FT / 111 SQ M

Colin Dean Residential

350 Pinner Road,
Harrow, HA1 4LB

020 8515 7929

daniel.murray@colindean.com

Energy Rating: D We aim to make our particulars both accurate and reliable. However they are not guaranteed; nor do they form part of an offer or contract. If you require clarification on any points then please contact us, especially if you're travelling some distance to view. Please note that appliances and heating systems have not been tested and therefore no warranties can be given as to their good working order.