



*Symonds
Taylor*

15 Carlton Terrace, Jesmond

Newcastle Upon Tyne

Offers Over **£950,000**



15 Carlton Terrace

Jesmond, Newcastle Upon Tyne

This impressive & spacious 5 storey mid terraced period townhouse with nearly 4,000sq ft of space forms part of the exclusive Carlton Terrace, minutes away from the city centre with a separate double garage & studio apartment and rear south facing courtyard garden that will have both a regional and national appeal.

Accommodation comprises:

Ground floor: Entrance vestibule, hallway, cloakroom/wc, sitting room, dining kitchen.

Lower ground floor: Family/garden room, utility room, wc.

First floor: Landing, drawing room/bedroom, bedroom 2, family bathroom.

Second floor: Landing, principal bedroom, ensuite bathroom, bedroom 3, ensuite shower room.

Third floor: Landing, bedroom 4, ensuite shower room.

Outside: Front town garden, rear paved south facing garden.

Studio: Open plan studio & kitchen, shower room/wc.

Council Tax band: G

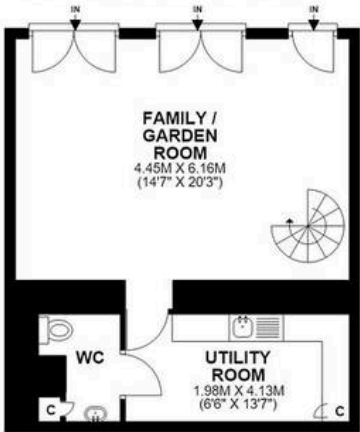
Tenure: Freehold

EPC Energy Efficiency Rating: D

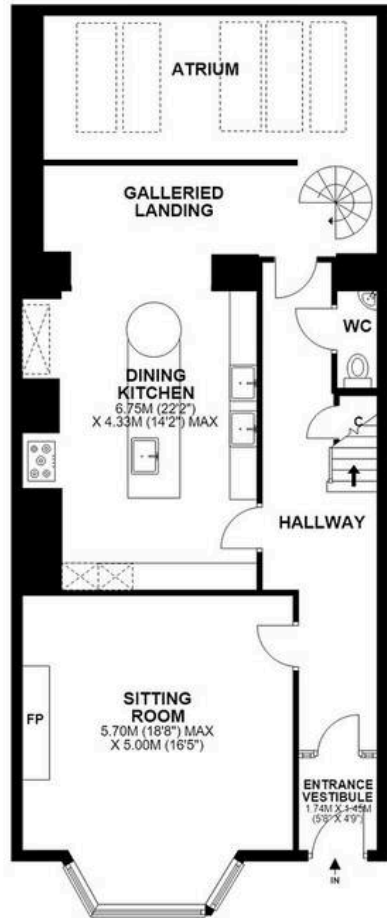
EPC Environmental Impact Rating: E



LOWER GROUND FLOOR



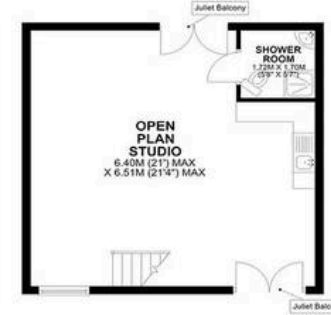
GROUND FLOOR



GROUND FLOOR



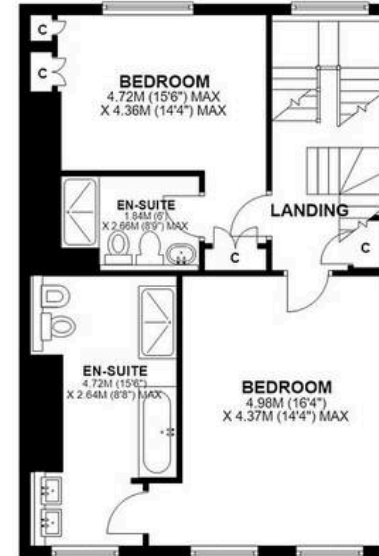
FIRST FLOOR



FIRST FLOOR



SECOND FLOOR



THIRD FLOOR



15 CARLTON TERRACE, JESMOND, NE2 4PD

APPROXIMATE GROSS INTERNAL AREA 270 SQ M 2909 SQ FT GARAGE 40 SQ M 435 SQ FT STUDIO 48 SQ M 516 SQ FT
NOT TO SCALE - FOR ILLUSTRATIVE PURPOSES ONLY





Symonds Taylor

101 St. Georges Terrace, Jesmond - NE2 2DN

0191 338 9999 • hello@symondstaylor.co.uk • www.symondstaylor.co.uk

All descriptions, plans or references to condition are given in good faith only. Whilst every endeavour is made to ensure accuracy, please check with us on any points of especial importance to you.