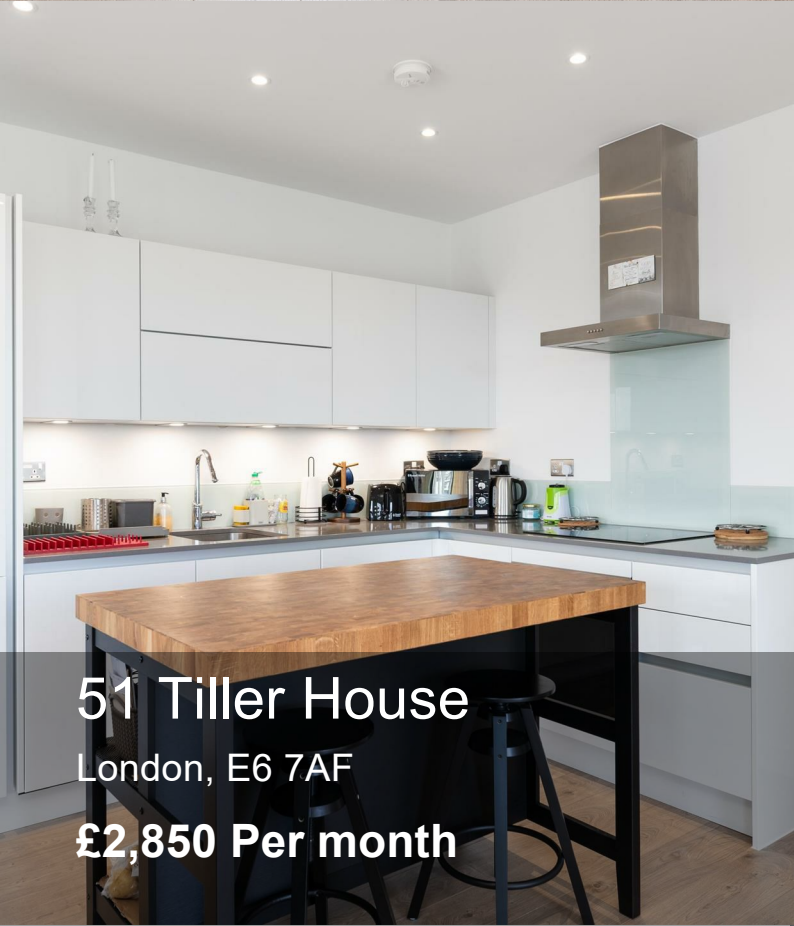


BROTHERS

PROPERTY MANAGEMENT

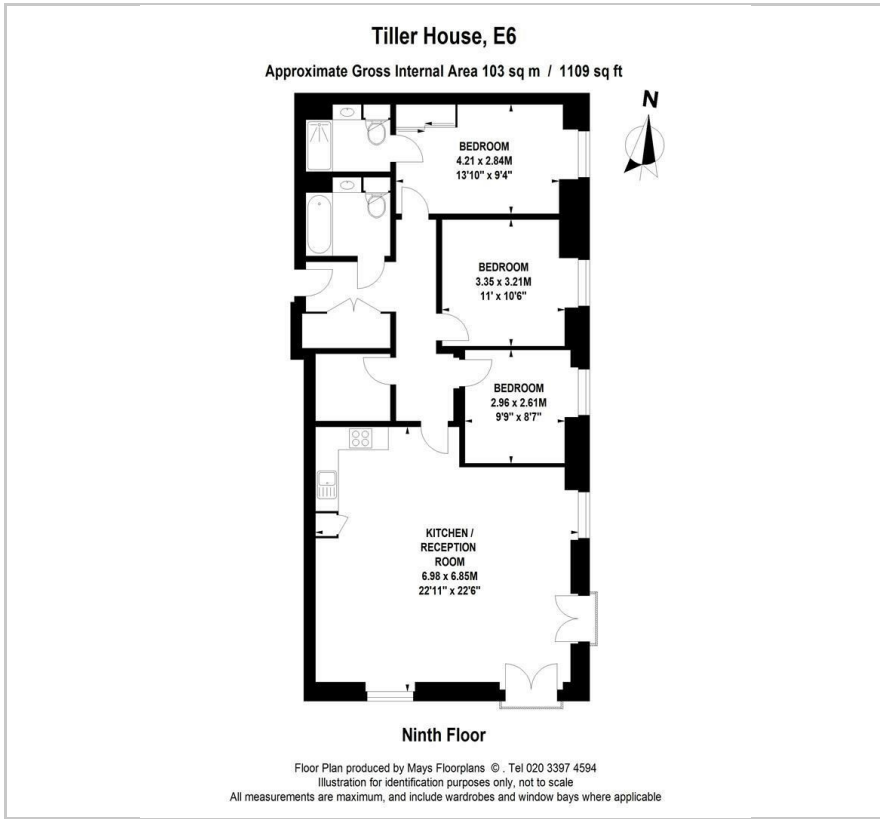


51 Tiller House
London, E6 7AF
£2,850 Per month



 3  2  1  B

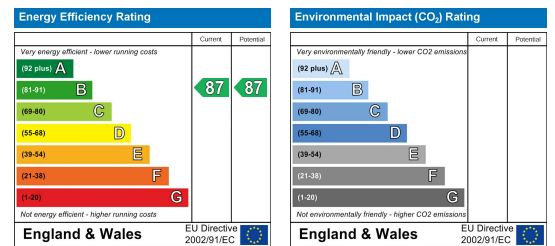
Floor Plan



Area Map



Energy Efficiency Graph



Viewing

Please contact our Brothers Property Management Office on 020 4526 6150 if you wish to arrange a viewing appointment for this property or require further information.

- Three Spacious Double Bedrooms
- Convenient Access to London City Airport
- High Quality Furniture
- Convenient Location
- Open-plan Kitchen/Reception Room
- River views
- DLR from Gallions reach Airport
- Modern Interior
- Floor to Ceiling Windows
- Parking Available by Separate Negotiation

A high specification, new build, 9th floor apartment with three large double bedrooms.



These particulars, whilst believed to be accurate are set out as a general outline only for guidance and do not constitute any part of an offer or contract. Intending purchasers should not rely on them as statements of representation of fact, but must satisfy themselves by inspection or otherwise as to their accuracy. No person in this firm's employment has the authority to make or give any representation or warranty in respect of the property.