



## 8 Cornmill Square, St Michaels Gate, Shrewsbury SY1 2LQ

3 bedroom duplex apartment—£200,000 Leasehold (Share of Freehold)

## 8 Cornmill Square, St Michaels Gate, Shrewsbury SY1 2LQ

£200,000 Leasehold (Share of Freehold)—3 bedroom duplex apartment

[sales@cgpooks.co.uk](mailto:sales@cgpooks.co.uk)

A very spacious duplex apartment situated in a very well designed Georgian style development. The property is just a stones throw from the town centre, has its own private south facing terrace as well as a parking space and access to a lovely gated communal garden.

### KEY FEATURES

- External Regency style staircase to the covered first floor entrance area.
- Entrance hall with built in storage, cloakroom and doors to both the living area and kitchen.
- Large open plan living/dining room with two sets of glazed double doors opening on to a Juliet balcony and a private first floor south facing terrace.
- Good sized separate kitchen which is big enough to accommodate a dining table and fitted with an extensive range of matching units, along with integrated appliances.
- Staircase from entrance hall to the landing where there are 3 bedrooms and a bathroom. The main bedroom also has built in wardrobes and an en suite shower room.
- Double glazed windows and gas fired central heating.
- Private parking space close to the apartment and gated access to a lovely secluded south facing rear garden, which is for residents use only.
- A small and very attractive development in a quiet and private setting, yet just a few minutes walk from the railway station and town centre.
- No onward chain.

Cooper Green Pooks  
3 Barker Street  
Shrewsbury  
SY1 1QF

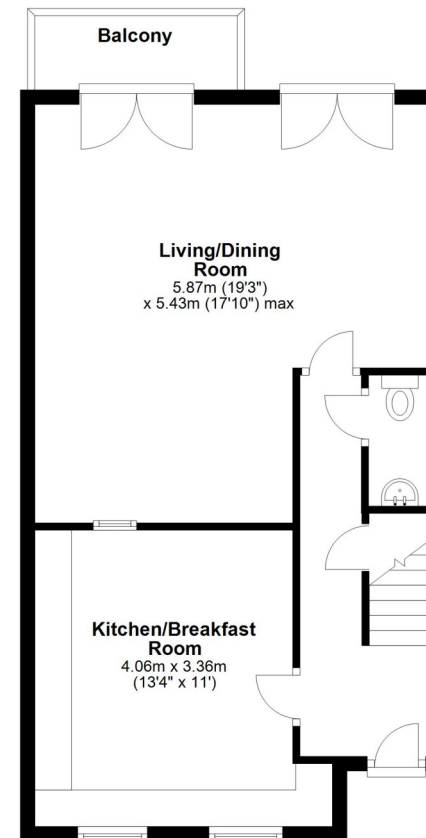
[www.cgpooks.co.uk](http://www.cgpooks.co.uk)  
[sales@cgpooks.co.uk](mailto:sales@cgpooks.co.uk)  
01743 276666



[Coopergreenpooks.co.uk](http://Coopergreenpooks.co.uk)

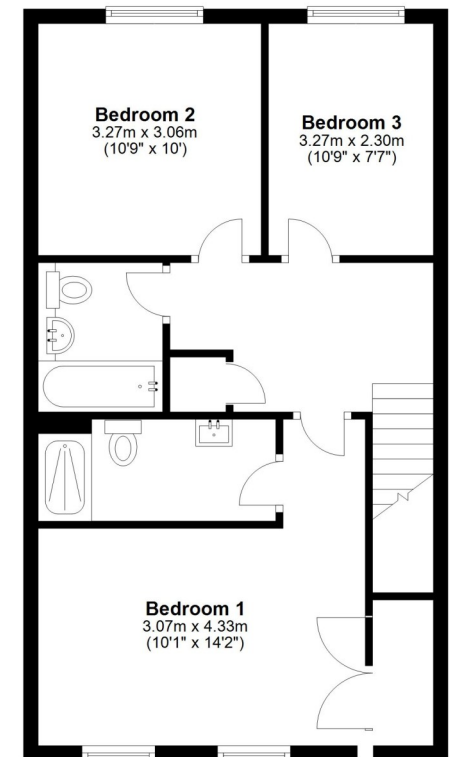
### First Floor

Approx. 46.5 sq. metres (500.9 sq. feet)



### Second Floor

Approx. 51.8 sq. metres (557.8 sq. feet)



Total area: approx. 98.4 sq. metres (1058.7 sq. feet)





## 8 Cornmill Square, St Michaels Gate, Shrewsbury SY1 2LQ

Coopergreenpooks.co.uk

£200,000 Leasehold—3 bedroom duplex apartment

[sales@cgpooks.co.uk](mailto:sales@cgpooks.co.uk)



Cooper Green Pooks  
3 Barker Street  
Shrewsbury  
SY1 1QF

[www.cgpooks.co.uk](http://www.cgpooks.co.uk)  
[sales@cgpooks.co.uk](mailto:sales@cgpooks.co.uk)



rightmove

OnTheMarket.com

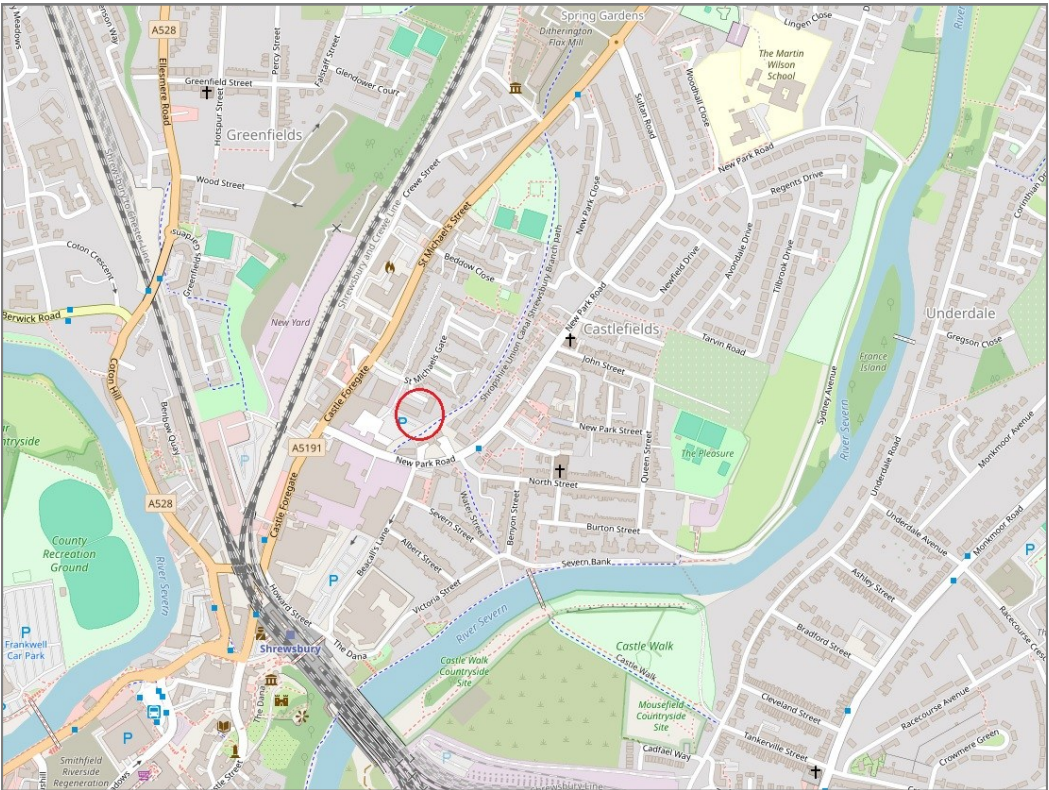
RICS  
Regulated by RICS

# 8 Cornmill Square, St Michaels Gate, Shrewsbury SY1 2LQ

£200,000 Leasehold—3 bedroom duplex apartment  
sales@cgpooks.co.uk



**BOUNDARIES NOT CONFIRMED**



Tenure	Leasehold
Lease Length	199 years from 2002
Service Charge	£1,238.20 PA (Jan—Dec 2025)

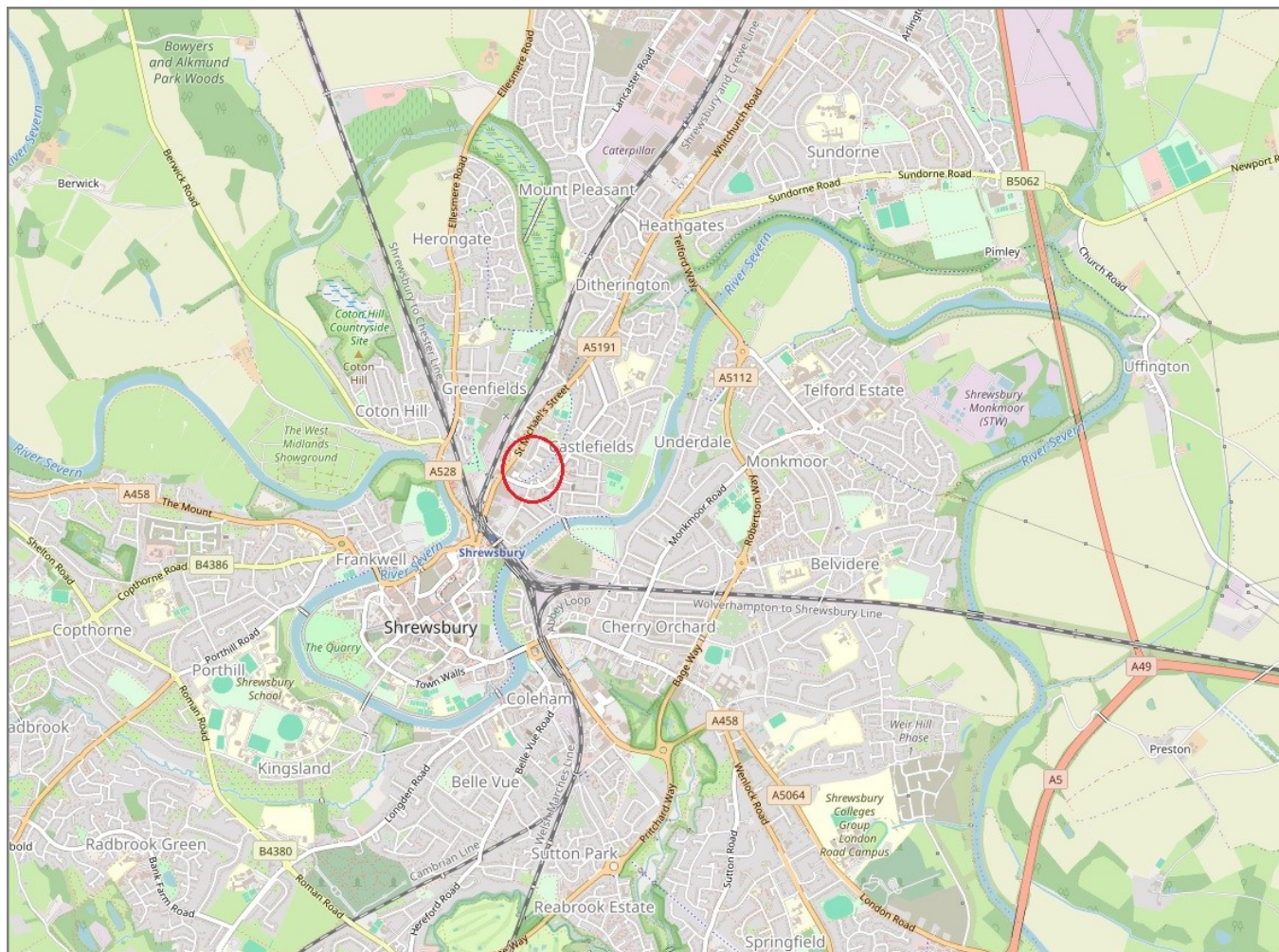
Local Authority	Shropshire Council
Council Tax	Band D
EPC Band	Band B
Services	All mains services are connected

## 8 Cornmill Square, St Michaels Gate, Shrewsbury SY1 2LQ

Coopergreenpooks.co.uk

£200,000 Leasehold—3 bedroom duplex apartment

sales@cgpooks.co.uk



**IMPORTANT NOTICE:** Cooper Green Pooks for themselves and for the lessors or vendors of this property whose agents they are give notice that: 1 No appliances, services or service installations have been tested and no warranty as to suitability or serviceability is implied. Any prospective purchaser or lessee is advised to obtain verification from their surveyor or solicitor. 2. The particulars are set out as a general outline only for the guidance of the intended purchasers or lessees and do not constitute, nor constitute part of, an offer or contract. 3. All descriptions, reference to condition and necessary permissions for use and occupation and other details are given in good faith and are believed to be correct but any intending purchasers or lessees should not rely on them as statements or representation of fact but satisfy themselves by inspection or otherwise as to the correctness of each of them. 4. No person in the employment of Cooper Green Pooks has any authority to make or give any representation or warranty whatsoever in relation to this property. 5. All rentals and prices are quoted exclusive of Stamp Duty, legal and surveyors fees and any other associated purchasers or lessees costs. 6. Floor plans are indicative only and should not be relied on. 7. The plan showing the boundary of the property is indicative only and has not been checked against the legal title so should not be relied on. 8. All dimensions, floor areas and site areas are only approximate and should not be relied on. Dimensions are generally maximum room dimension.