

whiteley helyar



630 ft²



1 bedroom



shower room

Guide Price £300,000

Flat 2, Bluecoat House, Sawclose, Bath, BA1 1EY

An exceptional period conversion apartment, on the second floor of a landmark building right in the heart of the city, offered with no onward chain. Forming part of the public square opposite the Theatre Royal, the flat boasts some stunning period features (including a very impressive bay window) and makes the perfect base from which one can enjoy all that Bath has to offer.

ACCOMMODATION

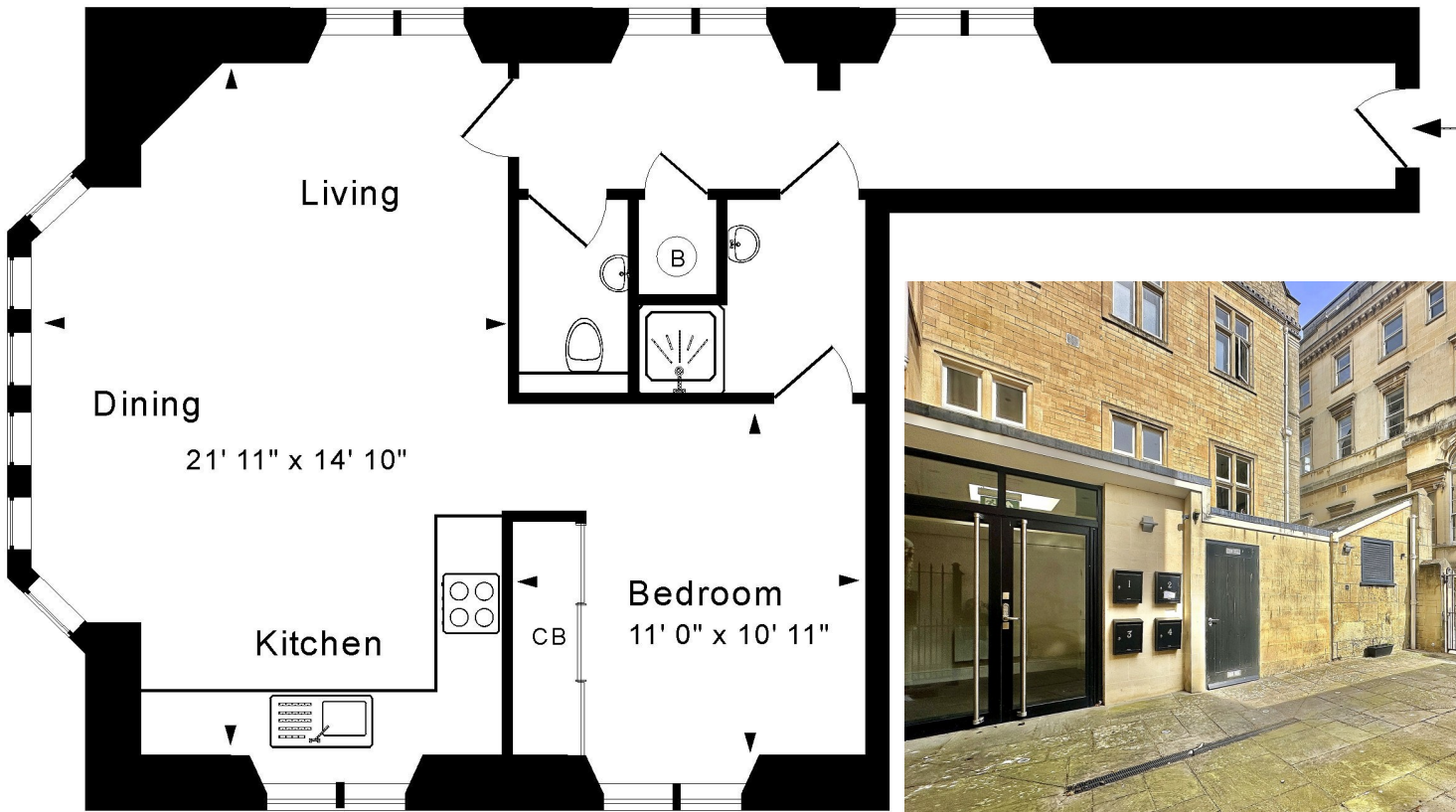
Entrance hall
Stunning open-plan kitchen/living/dining room with impressive feature bay window
Double bedroom with fitted triple wardrobe
'Jack and Jill' shower room
Separate W.C.

LOCATION

The apartment occupies a highly select and most convenient position in the very centre of Bath. In addition to the countless nearby shops and amenities, the property is within walking distance of Bath Spa Railway Station and Bath Rugby Recreation Ground, as well as tranquil Royal Victoria Park (with its fabulous grounds, Botanical Gardens, golf, tennis courts and extensive children's play area).







Second Floor

Approx. Gross Internal Floor Area 630 Sq. Ft. / 58.5 Sq. M
 Includes Conservatories. Excludes Garages, Porches etc. unless stated
 For identification purposes only. Not to scale. Copyright Jemesis Ltd 2026
 Drawing Number: 172-0880
 Flat 2, Bluecoat House, Sawclose, Bath, BA1 1EY.

Tenure: Leasehold
Lease length: 150 years from 2013
Service charge: £2,250 per annum
Council Tax Band: 'D' - £2,325.27

