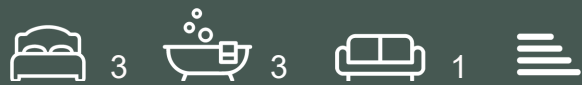




Ebury Square, London

£25,000

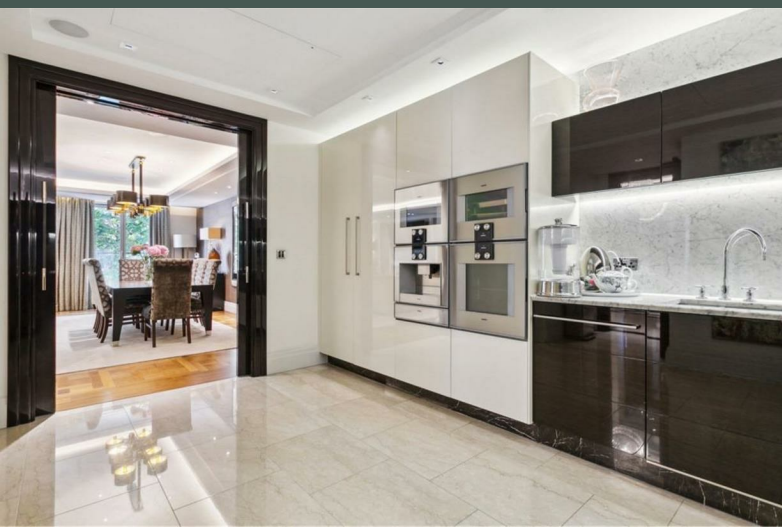


A beautifully presented lateral three-bedroom apartment set within a prestigious development - 1 Ebury Square, in the heart of Belgravia, SW1W



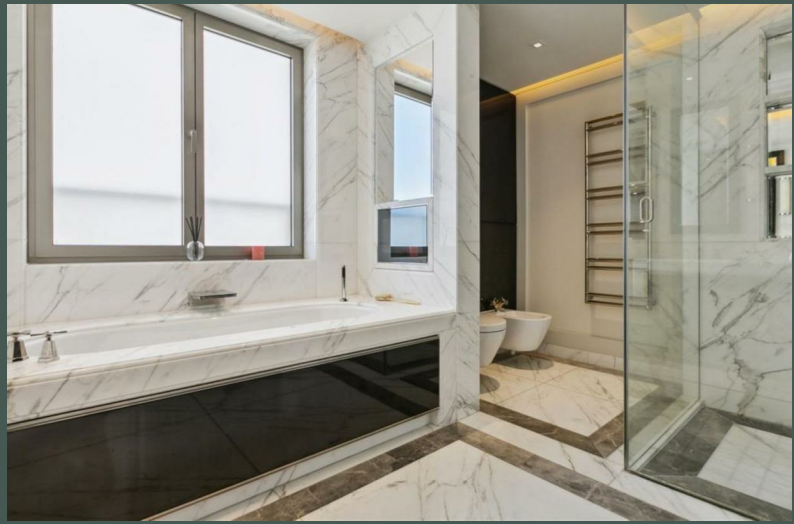
CROWN
LUXURY HOMES

lettings@crownluxuryhomes.com
+44 2035 143482



- 3 bedrooms
- Parking
- 24/7 concierge
- Residents' Sauna and Steam room

- 3 en-suite bathrooms
- Furnished
- Residents' gym
- Close to Sloane Square station



The Property

A beautifully presented lateral three-bedroom apartment set within a prestigious development in the heart of Belgravia.

Situated on the fourth floor, the apartment offers a spacious open-plan living and reception area with views over the gardens of Ebury Square. The separate kitchen is finished to a high specification with integrated Gaggenau appliances.

All three bedrooms benefit from en-suite bathrooms, with the principal suite further complemented by a generous walk-in wardrobe and access to a private balcony. In addition, the apartment includes a further guest bathroom, providing excellent convenience for visitors.

The property is finished to an exceptional standard throughout, combining elegant design with modern comfort. Residents benefit from a 24-hour concierge, private gym, sauna and steam rooms, as well as secure parking. Designed by Squire & Partners and developed by Berkeley Group, Ebury Square is discreetly positioned behind Eaton Square, surrounded by embassies, private gardens, and some of Belgravia's finest boutiques and restaurants.

The Development

Residents enjoy access to a 24-hour concierge, private residents' gym, sauna and steam rooms, as well as excellent security.

Designed by Squire & Partners and developed by Berkeley Group, the development is discreetly positioned behind Eaton Square, surrounded by embassies, private gardens, and luxury boutiques.

Located in southern Belgravia, Ebury Square is in a fantastic location with the exclusive boutiques, jewellers and fine restaurants of the Kings Road, Sloane Square and Elizabeth Street only moments away. The transport links are also great, with Sloane Square Tube station (for the District and Circle lines) and Victoria station (for the Victoria, Circle and District lines and Overground services) conveniently located.

Additional Information

Heating/Hot water provider - TBC

Council: Westminster, Band H

Holding Deposit: Equivalent to 1 Weeks' Rent

Security Deposit: Equivalent to 5 Weeks' Rent

Local Council: Westminster
 Council Tax Band: H

Energy Efficiency Rating		Environmental Impact (CO ₂) Rating	
	Current	Potential	
Very energy efficient - lower running costs			Very environmentally friendly - lower CO ₂ emissions
(92 plus) A			(92 plus) A
(81-91) B			(81-91) B
(69-80) C			(69-80) C
(55-68) D			(55-68) D
(39-54) E			(39-54) E
(21-38) F			(21-38) F
(1-20) G			(1-20) G
Not energy efficient - higher running costs			Not environmentally friendly - higher CO ₂ emissions
England & Wales	EU Directive 2002/91/EC		England & Wales
			EU Directive 2002/91/EC

