



Levens Court Levens Drive, Heysham, Morecambe

The property at a glance

1  1  1 

- Ground Floor One Bedroom Apartment
- Fitted Kitchen
- Fitted Bathroom with Shower
- Available Now
- EPC rating D



Get in touch today

01524 401402
info@gfproperty.co.uk
gfproperty.co.uk

£650

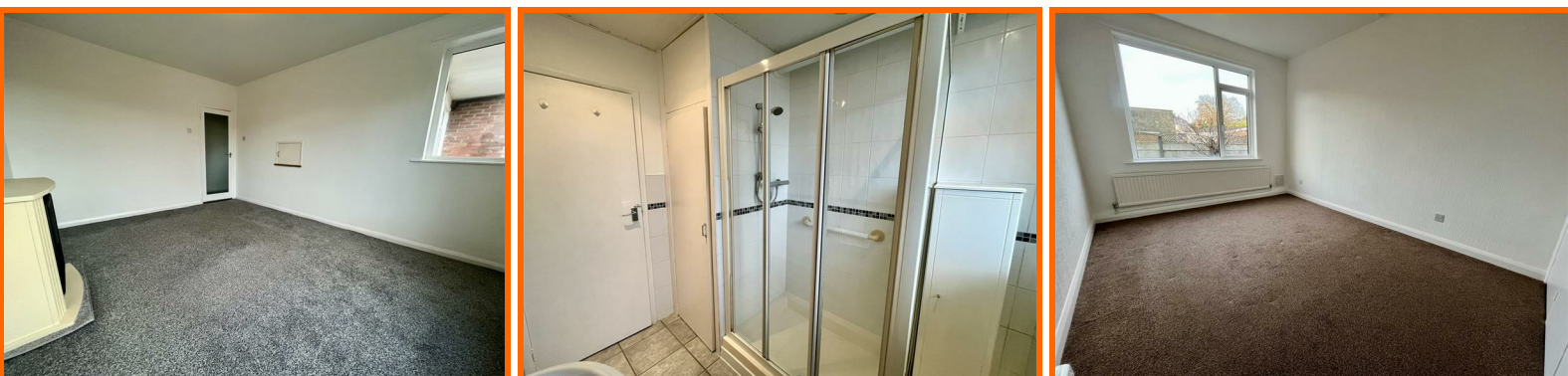
Get to know the property



Welcome to this charming apartment located on Levens Drive in the picturesque area of Heysham, Morecambe. This delightful property offers a perfect blend of comfort and convenience, making it an ideal choice for individuals or couples seeking a cosy home.

Spanning an area of 549 square feet, the apartment features a well-appointed reception room that provides a warm and inviting space for relaxation or entertaining guests. The single bedroom is designed to be a peaceful retreat, ensuring a restful night's sleep. The bathroom is functional and well-maintained, catering to all your daily needs.

Situated in a desirable location, this apartment benefits from easy access to local amenities, including shops, parks, and transport links, making it a practical choice for those who value both tranquillity and accessibility. The surrounding area is known for its scenic beauty, with coastal views and green spaces that enhance the overall living experience.





Flat 15, Levens Court Levens Drive, Heysham, Morecambe,



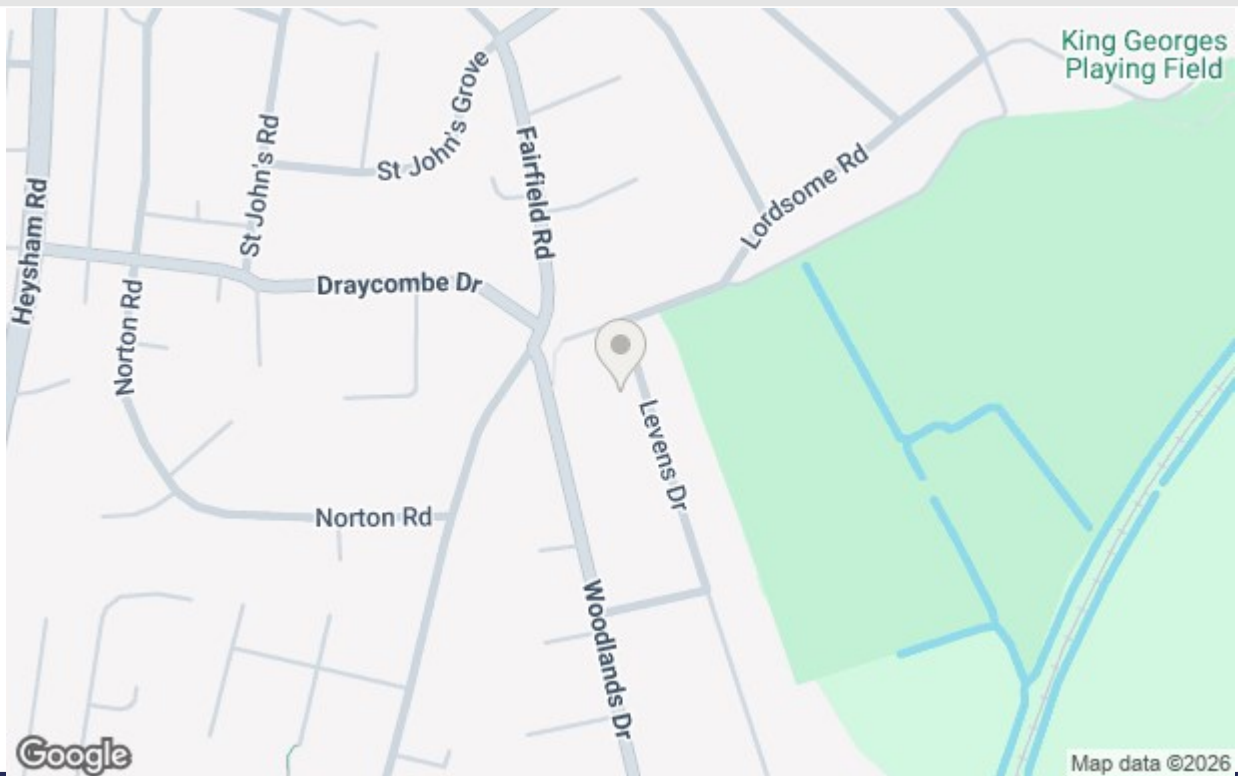
Get in touch today

01524 401402

info@gfproperty.co.uk

gfproperty.co.uk

Take a nosey round



Get in touch today

01524 401402
info@gfproperty.co.uk
gfproperty.co.uk

Energy Efficiency Rating		Current	Potential
Very energy efficient - lower running costs			
(92 plus) A			
(81-91) B			
(69-80) C			
(55-68) D			
(39-54) E			
(21-28) F			
(1-20) G			
Not energy efficient - higher running costs			
England & Wales		EU Directive 2002/91/EC	
		68	76

Environmental Impact (CO ₂) Rating		Current	Potential
Very environmentally friendly - lower CO ₂ emissions			
(92 plus) A			
(81-91) B			
(69-80) C			
(55-68) D			
(39-54) E			
(21-28) F			
(1-20) G			
Not environmentally friendly - higher CO ₂ emissions			
England & Wales		EU Directive 2002/91/EC	