



Groveswood

Sandycombe Road, TW9

£3,500 per month
(£807.69 per week)

SHORT LET BILLS INCLUDED. Two-bedroom ground floor apartment in the heart of Kew, next to Kew Gardens Station. The apartment also boasts a well-maintained communal garden area along with a private off street parking space. Offered fully furnished.



Grovewood

Sandycombe Road, TW9

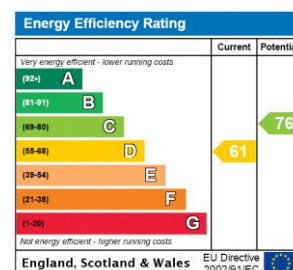
- Two Double Bedrooms
- One Bathroom
- One Reception
- Flat/Apartment
- Allocated Parking
- Communal Garden
- Ground Floor



SHORT LET BILLS INCLUDED. Two bedroom ground floor apartment in the heart of Kew, just a stone's throw from Kew Gardens Station. The apartment also boasts a well maintained communal garden area along with a private off street parking space. Offered fully furnished.

Kew is a district in the London Borough of Richmond upon Thames. Its population at the 2011 census was 11,436. Kew is the location of the Royal Botanic Gardens, now a World Heritage Site, which includes Kew Palace.

Minimum Term: 3 months
Deposit Required: three weeks
Local Authority: London Borough Of Richmond Upon Thames
Council Tax Band: D
EPC Rating: D



Chestertons Kew Lettings

1 Royal Parade
 Richmond
 Surrey
 TW9 3QD
kewlettingsusers@chestertons.co.uk
 02081040340
chestertons.co.uk

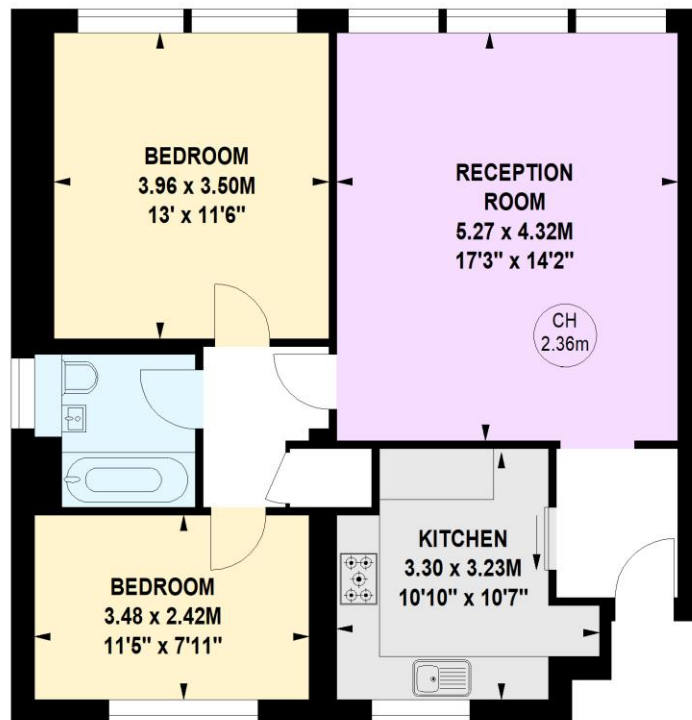
Additional tenant charges apply (fees apply to non-AST tenancies only)
 Tenancy Agreement Fee: £300
 References per Tenant/Guarantor: £60
 Inventory check (approx. £100 – £250 inc. VAT)
chestertons.co.uk/property-to-rent/applicable-fees

**Groveswood,
Sandycombe Road,
Richmond,
Surrey, TW9**

Approximate gross internal area

68.00 sq m / 732 sq ft

Key :
CH - Ceiling Height



Ground Floor

**Not to scale, for guidance only and must not be relied upon as a statement of fact.
All measurements and areas are approximate only**

