



Benham Road, W7

£599,950

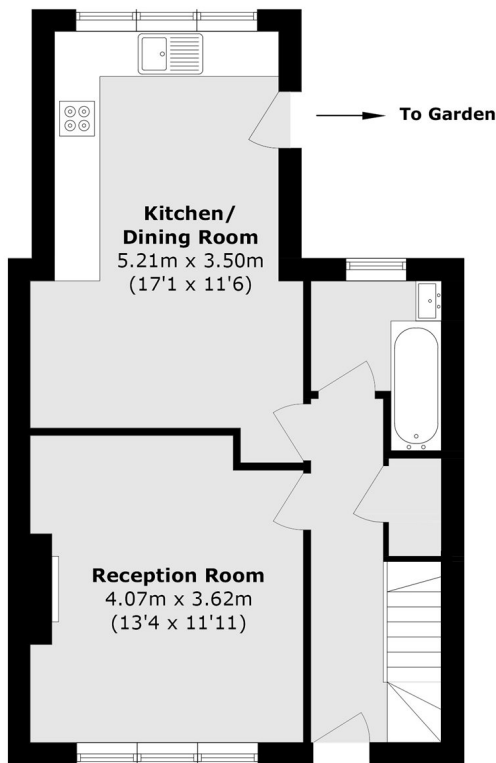
This three bedroom semi-detached house has been rear extended with further potential to extend to the side and into the loft (STPP). The property has off-street parking for two cars and is ideally located within the Cuckoo Estate.



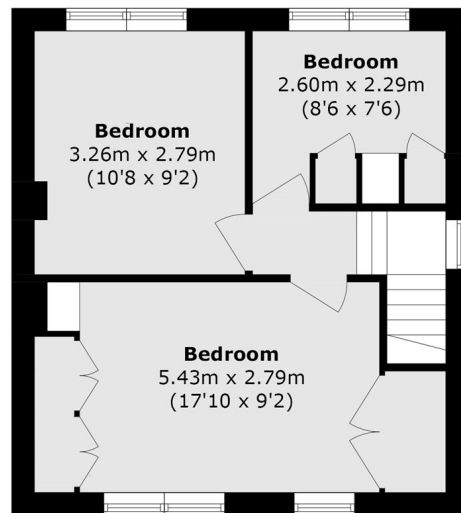
Conveniently located for Castlebar Park and Hanwell (Elizabeth line) stations, with frequent bus links on Greenford Avenue just a short stroll away. Surrounded by a selection of well regarded schools including Brentside and Drayton Manor high schools and close to the green open space of Cuckoo Park.

- Three Bedrooms • Semi-Detached • Rear Extended •
- Potential To Extend (STPP) • Off-Street Parking • Cuckoo Estate •





Ground Floor



First Floor

Total area (approx.): 76.5 sq. m (823.4 sq. ft)

Robertson Smith & Kempson Hanwell Sales
69 Greenford Avenue,
London, W7 1LL
020 8566 2339
hanwellsales@robertsonsmithandkempson.co.uk

Energy Rating: D. We aim to make our particulars both accurate and reliable. However they are not guaranteed; nor do they form part of an offer or contract. If you require clarification on any points then please contact us, especially if you're traveling some distance to view. Please note that appliances and heating systems have not been tested and therefore no warranties can be given as to their good working order.