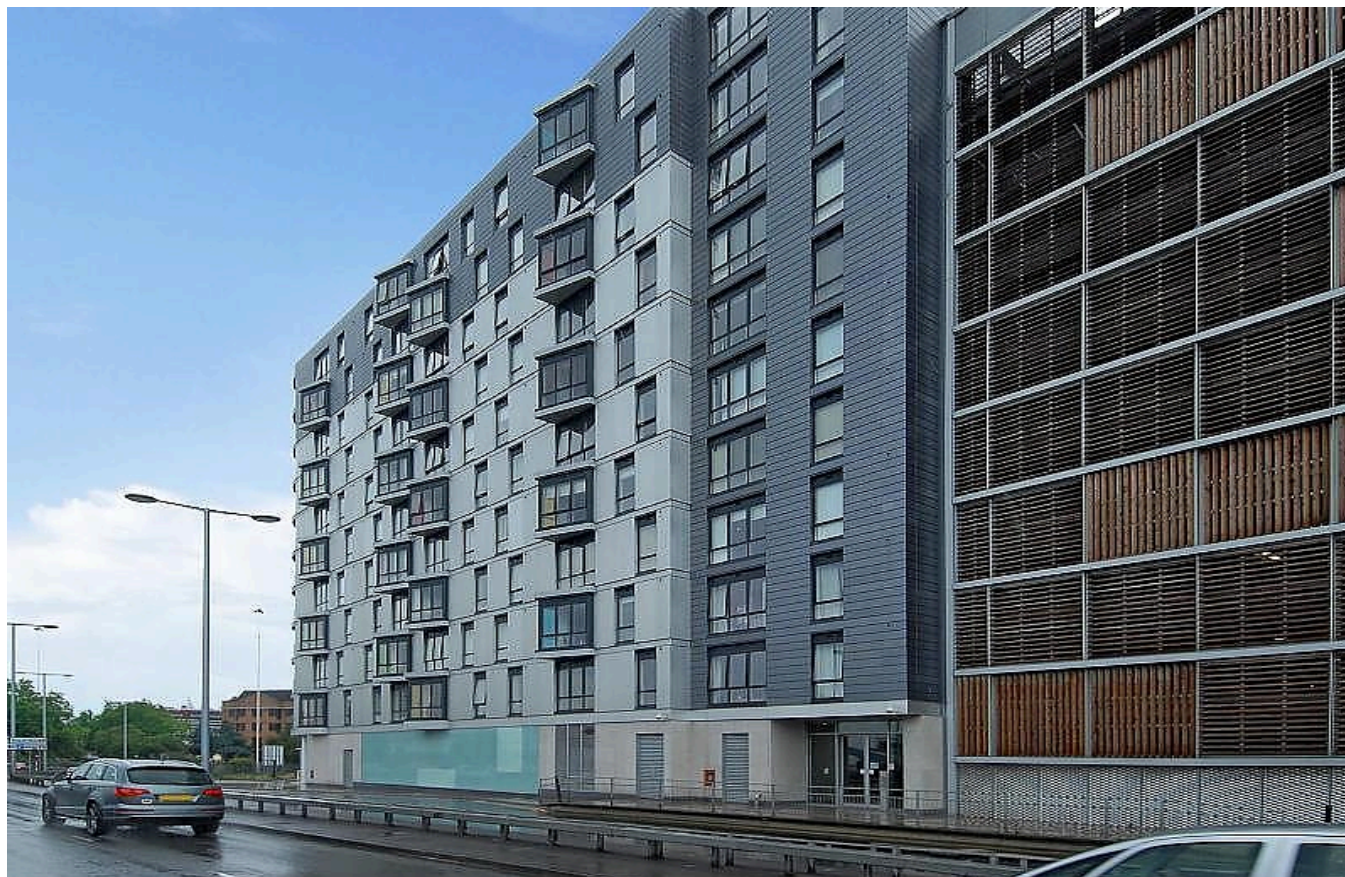


Property ref: 1709

Hermitage, Reading, RG1 7LF

£1,650 PCM

HASLAM'S
Lettings



A modern two bedroom 2nd floor apartment located within an impressive development on the western fringe of the town centre. Reading Borough Council tax band D. Broadband/Mobile Info: Connections available. For an indication of specific speeds and supply of Broadband and Mobile, we advise applicants go to the Ofcom website 'Broadband and Mobile Coverage Checker.

Available 27/07/2026

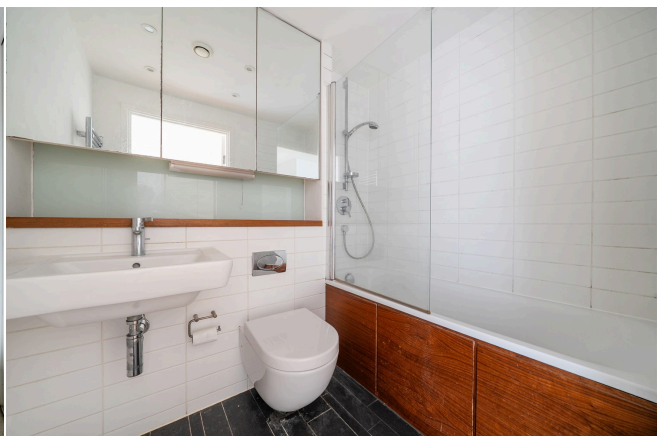
- Open plan living/kitchen room with wood floors
- Modern kitchen fitted with built-in appliances
- Two double bedrooms with built-in wardrobes; Master has en-suite shower room
- Bathroom with independent shower over bath; Gas central heating
- Secure allocated parking; On-site concierge; EPC Rating B
- Furnished; Managed by HASLAM'S

*Fees For Assured Shorthold Tenancies: when you rent a property from us you will be required to pay a sum equivalent to one weeks' rent for a holding deposit. Upon successful application, this amount will be off set against your first months' rent. You will also be required to pay a security deposit equivalent to 5 weeks' rent which will be held and protected in line with Deposit legislation. For more information about our fees please visit: www.haslams.net
Fees for all other tenancies (Non Housing Act Tenancies / Company Lets): when you rent a property from us we will charge you a one-off fee per property. This charge is the equivalent of 15 days of the monthly rental charge (+VAT) with a minimum fee of £450 (inc.VAT) up to a maximum of £650 (inc.VAT). Other fees may apply depending on your circumstances.

0118 960 1055

lettings@haslams.net www.haslams.net

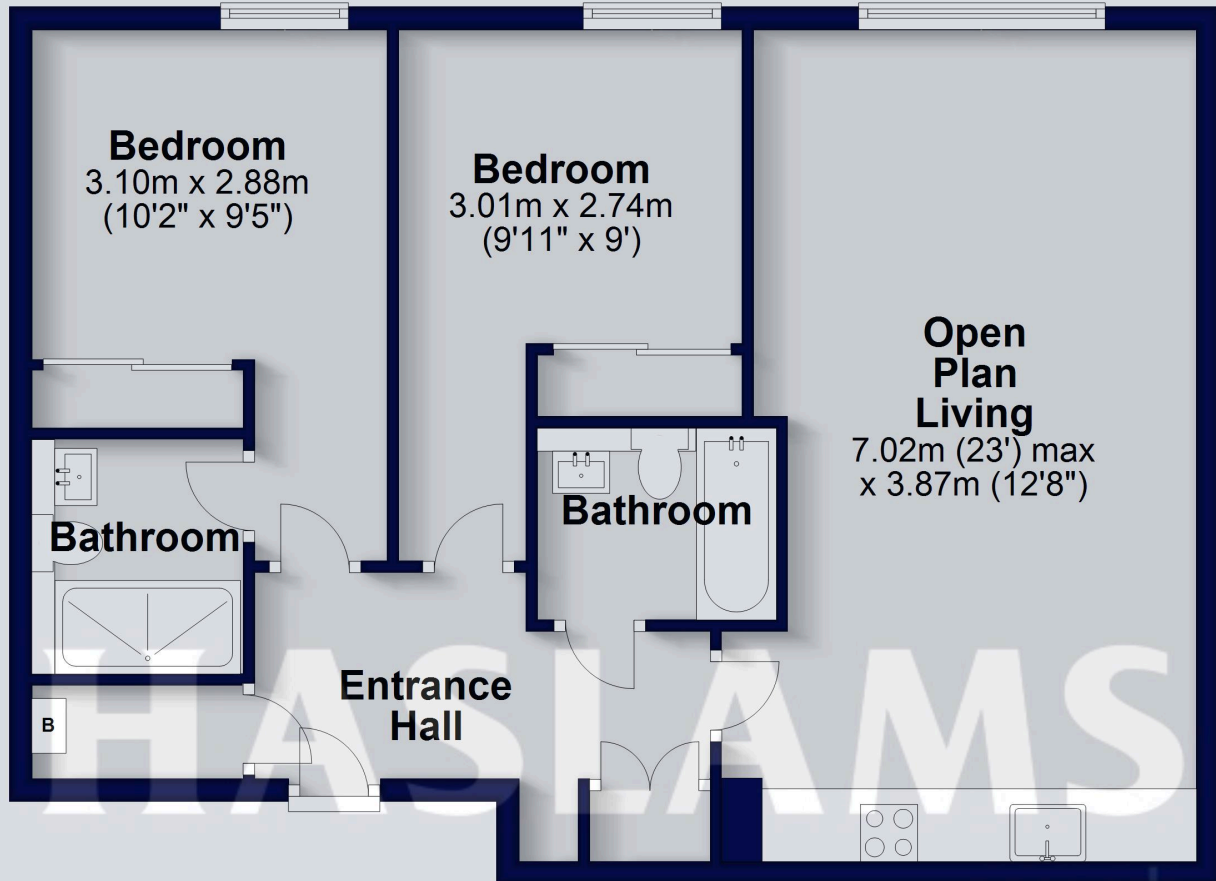
Haslams Estate Agents Ltd, 159 Friar Street, Reading, Berkshire, RG1 1HE





Second Floor

Approx. 69.4 sq. metres (747.0 sq. feet)



Total area: approx. 69.4 sq. metres (747.0 sq. feet)

This floorplan is for illustrative purposes only and is not to scale. The total area includes all the areas shown.
Plan produced using PlanUp.