

Mill Close

West Drayton • • UB7 7EW
Offers In Excess Of: £500,000



coopers
est 1986

Mill Close

West Drayton • • UB7 7EW

A well-presented, extended and generously proportioned three/four-bedroom mid-terrace home, offering versatile accommodation across three levels. The property benefits from a double driveway to the front, along with a private rear garden featuring a useful storage outbuilding and a garage. All windows and the front door were replaced in 2025. The first floor comprises three bedrooms and a family bathroom, while the loft has been adapted to provide an additional bedroom space. To the ground floor, there is a spacious living area featuring an original fireplace surround with a working gas fire, alongside a large kitchen and a ground floor bathroom with shower. Ideally located within walking distance of The Green in West Drayton, the property offers convenient access to local amenities, schools, and transport links.

- Three-bedroom terraced home arranged over three floors

Beautifully renovated throughout

Spacious and bright lounge/diner

Modern extended kitchen/breakfast room

Two bathrooms

Three well-proportioned bedrooms on the first floor

- Converted loft room providing versatile accommodation

Driveway & low maintenance rear garden

Suitable for growing families or first-time buyers

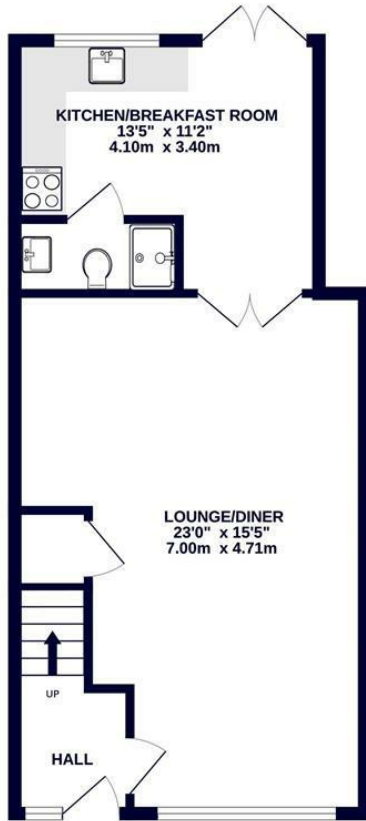
Ideally located moments from The Green

These particulars are intended as a guide and must not be relied upon as statements of fact. Your attention is drawn to the Important Notice on the last page.

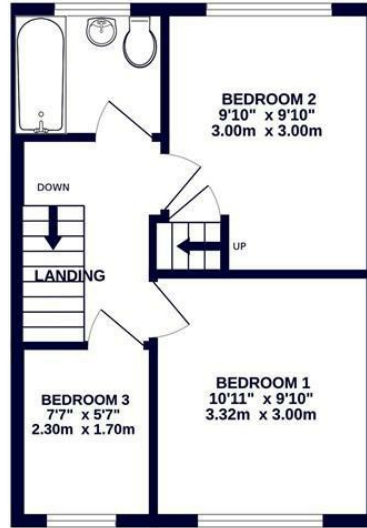




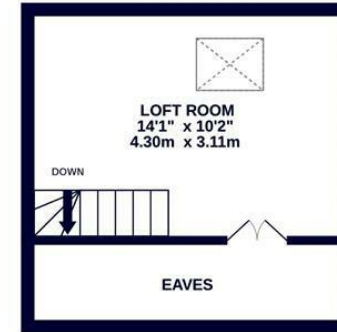
GROUND FLOOR
505 sq.ft. (46.9 sq.m.) approx.



1ST FLOOR
355 sq.ft. (33.0 sq.m.) approx.



2ND FLOOR
198 sq.ft. (18.4 sq.m.) approx.



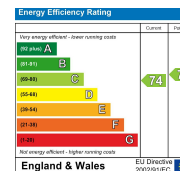
TOTAL FLOOR AREA: 1057 sq.ft. (98.2 sq.m.) approx.

Whilst every attempt has been made to ensure the accuracy of the floorplan contained here, measurements of doors, windows, rooms and any other items are approximate and no responsibility is taken for any error, omission or mis-statement. This plan is for illustrative purposes only and should be used as such by any prospective purchaser. The services, systems and appliances shown have not been tested and no guarantee as to their operability or efficiency can be given.
Made with Metropix ©2026



1 Tavistock Road, West Drayton,
Middlesex, UB7 7QT
westdrayton@coopersresidential.co.uk

CoopersResidential.co.uk



Important Notice: These particulars, whilst believed to be accurate are set out as a general outline only for guidance and do not constitute any part of an offer or contract. Intending purchasers should not rely on them as statements or representation of fact, but must satisfy themselves by inspection or otherwise has the authority to make or give any representation or warranty in respect of the property.