

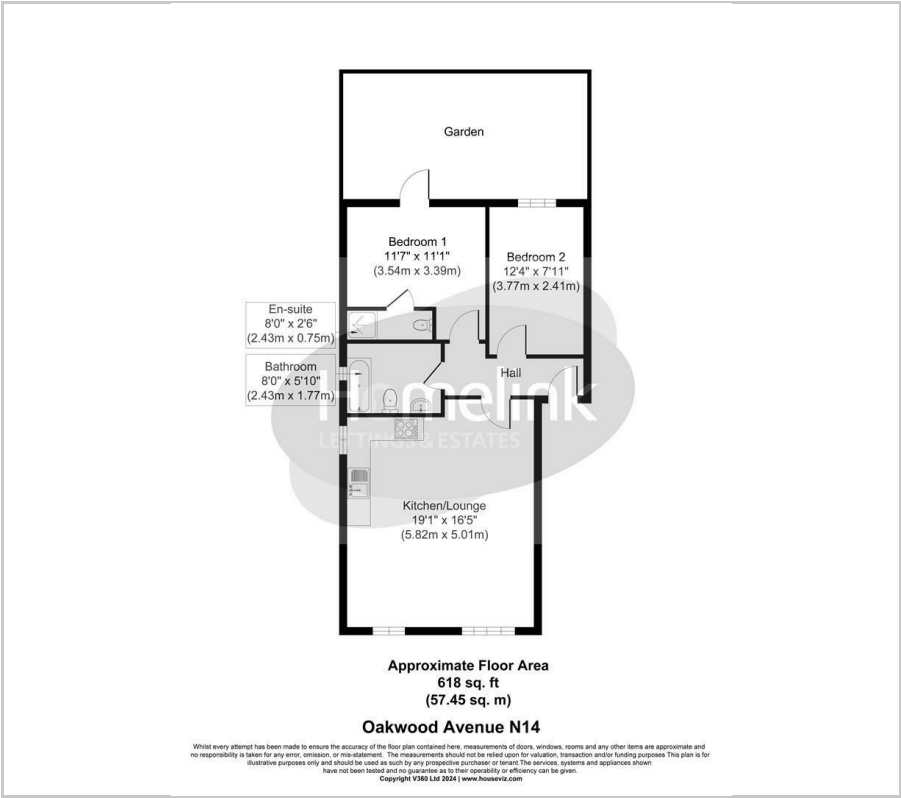


Oakwood Avenue, Southgate, N14

£1,900 PCM

2 2 1 C

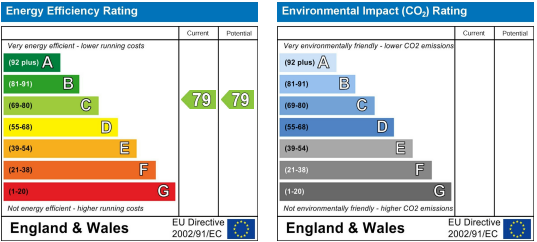
Floor Plan



Area Map



Energy Efficiency Graph



Viewing

Please contact our Homelink Lettings & Estates Office on 0208 882 2112 if you wish to arrange a viewing appointment for this property or require further information.

- Modern Flat
- Ground floor property
- Off street parking
- Modern Bathroom
- Must see!
- Two bedroom flat
- Private rear garden
- Modern Kitchen
- Close to Southgate underground station
- Ideal for working professional couples

Nestled on the charming Oakwood Avenue in Southgate, N14, this newly refurbished ground floor flat presents an excellent opportunity for those seeking a modern and comfortable living space. Boasting two well-proportioned bedrooms, this property is ideal for couples, small families, or individuals looking for a serene retreat.

Upon entering, you will be greeted by a bright and inviting reception room, perfect for relaxation or entertaining guests. The flat has been thoughtfully updated throughout, ensuring a fresh and contemporary feel that meets the demands of modern living. The stylish bathroom complements the overall aesthetic, providing a tranquil space for unwinding after a long day.

One of the standout features of this property is the private rear garden, offering a delightful outdoor space for gardening enthusiasts or those who simply wish to enjoy a breath of fresh air. This garden is a rare find in a flat, providing an excellent area for al fresco dining or leisurely afternoons in the sun.

Conveniently located, the flat is just a short stroll from Southgate tube station, making commuting to central London a breeze. The surrounding area is well-served by local amenities, including shops, cafes, and parks, ensuring that all your daily needs are within easy reach.

Council tax band - C - Enfield - £1,923.57



These particulars, whilst believed to be accurate are set out as a general outline only for guidance and do not constitute any part of an offer or contract. Intending purchasers should not rely on them as statements of representation of fact, but must satisfy themselves by inspection or otherwise as to their accuracy. No person in this firm's employment has the authority to make or give any representation or warranty in respect of the property.

Homelink Lettings and Estates
62 Chase Side, London N14 5PA
0208 882 2112 [homelink.co.uk](https://www.homelink.co.uk)

