

Grafton Road, NW5

£425,000

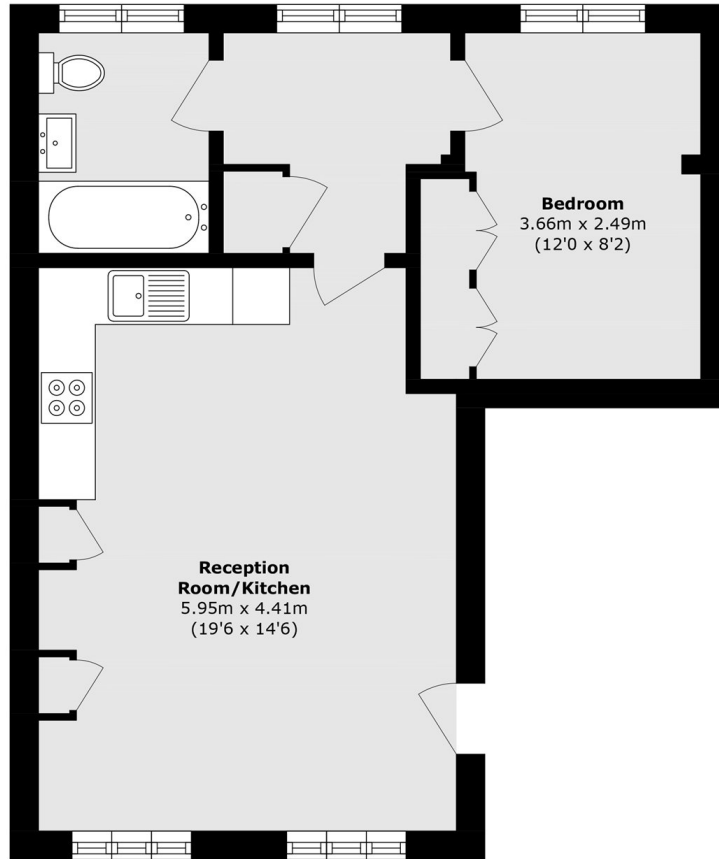
This stunning one double bedroom apartment is in great condition throughout. The apartment has wooden floors throughout, lots of windows letting in natural light and being sold chain free.

Grafton Road is a short walk from the Parliament Hill entrance to Hampstead Heath with easy access to the open air lido and amazing views over London. Gospel Oak overground station is the closest station, with Kentish Town underground also close by.

Features

- One Double Bedroom
- One Bathroom
- Great Condition
- Leasehold
- First Floor
- Chain Free

Grafton Road, London, NW5



Total area (approx.): 46.6 sq. m (501.6 sq. ft)