



Wellesley Road, W4

£2,495 Per calendar month

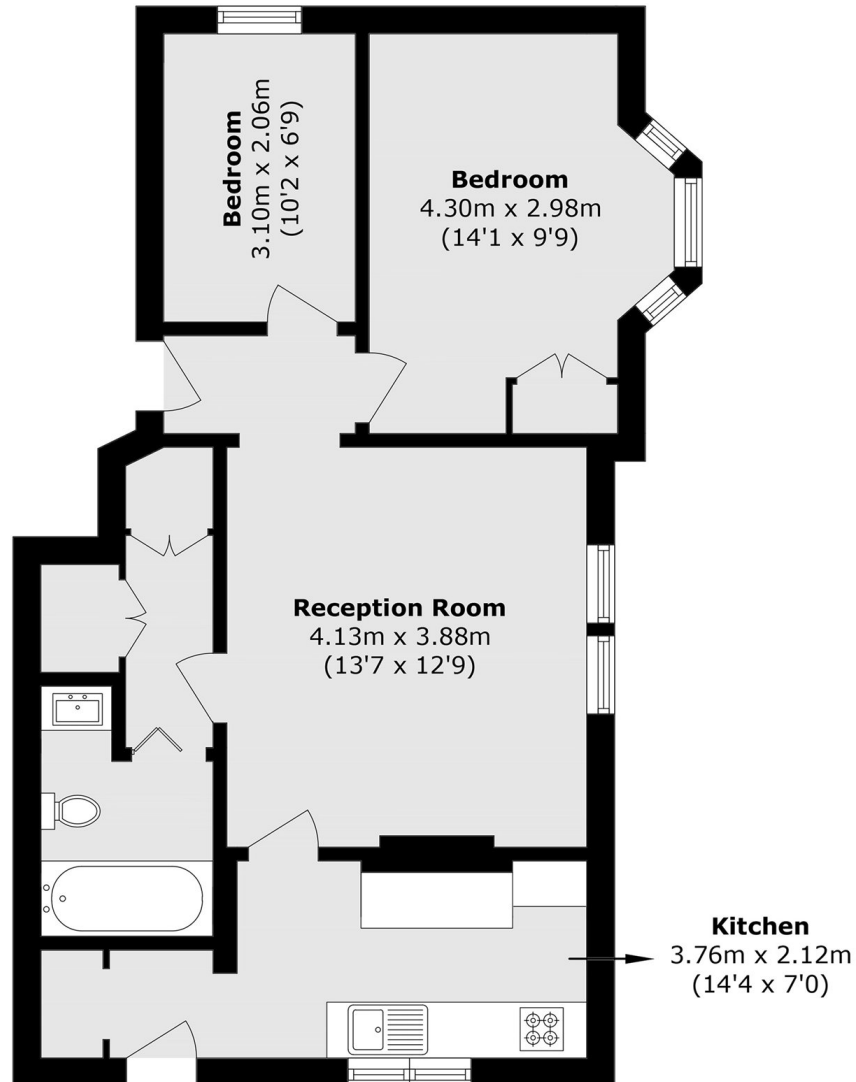
A well-presented two-bedroom raised ground floor apartment featuring a spacious reception room, wood flooring throughout and a modern kitchen with direct access to a private patio garden and off-street parking.

Located within a mile from Gunnersbury underground tube station, Kew Bridge mainline station and the bars and restaurants along the River Thames.

Features

- Two Bedrooms
- Private Patio
- Wooden Floors
- Ample Storage
- Off-Street Parking
- Transport Links Nearby

Wellesley Road,
London, W4



Total area (approx.): 59.5 sq. m (640.4 sq. ft)