

# SNELLERS

ESTATE AGENTS

---



## Candler Mews, TW1

£1,050,000

This split level top floor apartment is nestled within the sought-after enclave of Candler Mews on Amyand Park Road, this outstanding apartment forms part of an exclusive office-to-residential conversion.



Offering over 1,400 sq ft of beautifully designed living space, this two-bedroom, two-bathroom apartment has been crafted to an incredibly high specification throughout. From premium fixtures and fittings to thoughtful design and layout, every detail has been considered for modern comfort and style.

Set on the top floor, this property boasts impressive views, ideal for al fresco dining or quiet relaxation. Additional features include private parking with electric vehicle charging point and an open-plan living space that seamlessly blends luxury and practicality.

Perfectly positioned in the heart of Twickenham, you will be moments from the town centre's vibrant shops, restaurants, and riverside walks, with Twickenham Station just a short stroll away for fast links into London Waterloo. A unique high-end home in one of Twickenham's most desirable and discreet locations.

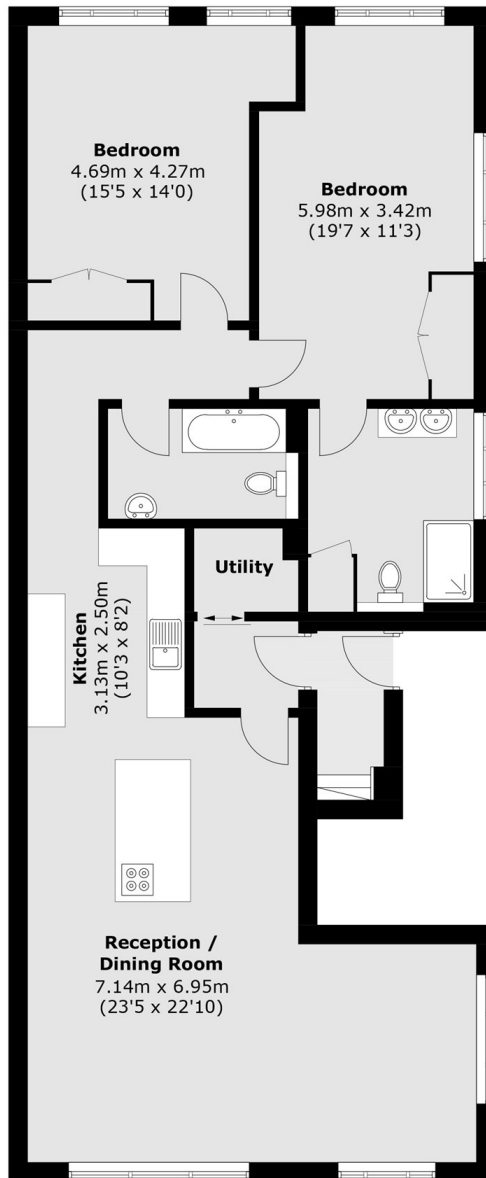
- Two Bedrooms • Two Bathrooms • Brand New Conversion •
- Share Of Freehold • Split Level Luxury Apartment • No Onward Chain •



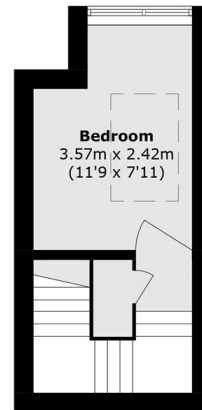


# SNELLERS

ESTATE AGENTS



**Second Floor**



**Third Floor**

Total area (approx.): 130.4 sq. m 1,403.6 sq. ft)

Snellers Twickenham Sales  
64-66 Heath Road  
Twickenham  
TW1 4BX  
020 8892 5555  
twickenhamsales@snellers.co.uk

Energy Rating: We aim to make our particulars both accurate and reliable. However they are not guaranteed; nor do they form part of an offer or contract. If you require clarification on any points then please contact us, especially if you're traveling some distance to view. Please note that appliances and heating systems have not been tested and therefore no warranties can be given as to their good working order