



PUMPING STATION ROAD, W4

£2,300 per month

Situated within a well-maintained modern development just moments from the River Thames, this impressive two-bedroom, two-bathroom apartment offers stylish contemporary living.

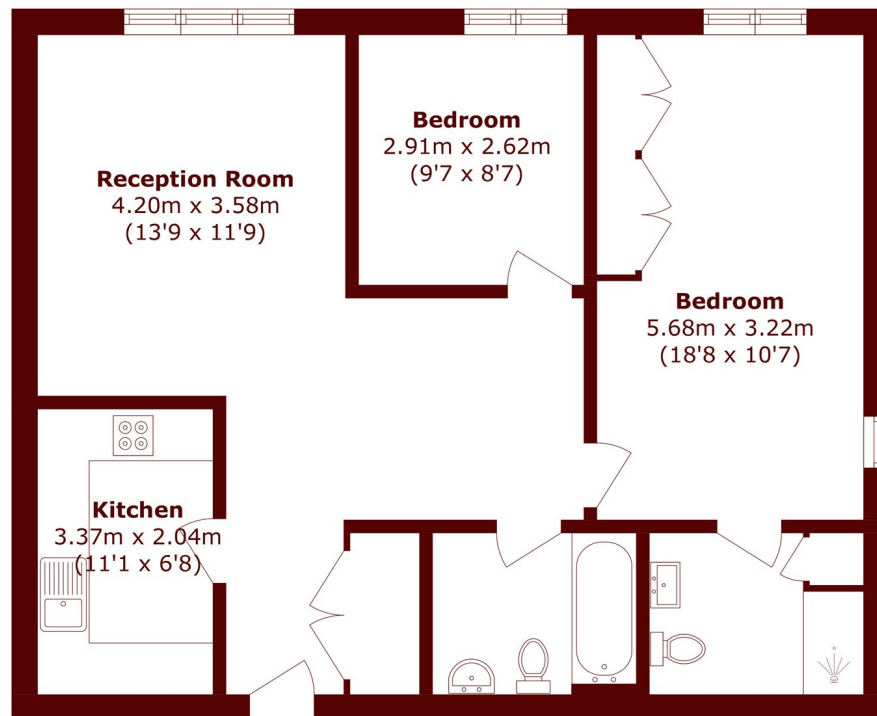
Two bedrooms
Purpose built
Semi open plan

Off street parking
Second floor
Energy rating: b

@marshandparsons
marshandparsons.co.uk

MARSH &
PARSONS

STEP INSIDE PUMPING STATION ROAD



Total area (approx.): 73.6 sq. m (792.2 sq. ft)

Chiswick
020 8629 0900

Energy Rating: B We aim to make our particulars both accurate and reliable. However, they are not guaranteed; nor do they form part of an offer or contract. If you require clarification on any points then please contact us, especially if you're traveling some distance to view. Please note that appliances and heating systems have not been tested and therefore no warranties can be given as to their good working order

MARSH &
PARSONS