



Park Walk, SW10

£4,000 Per calendar month

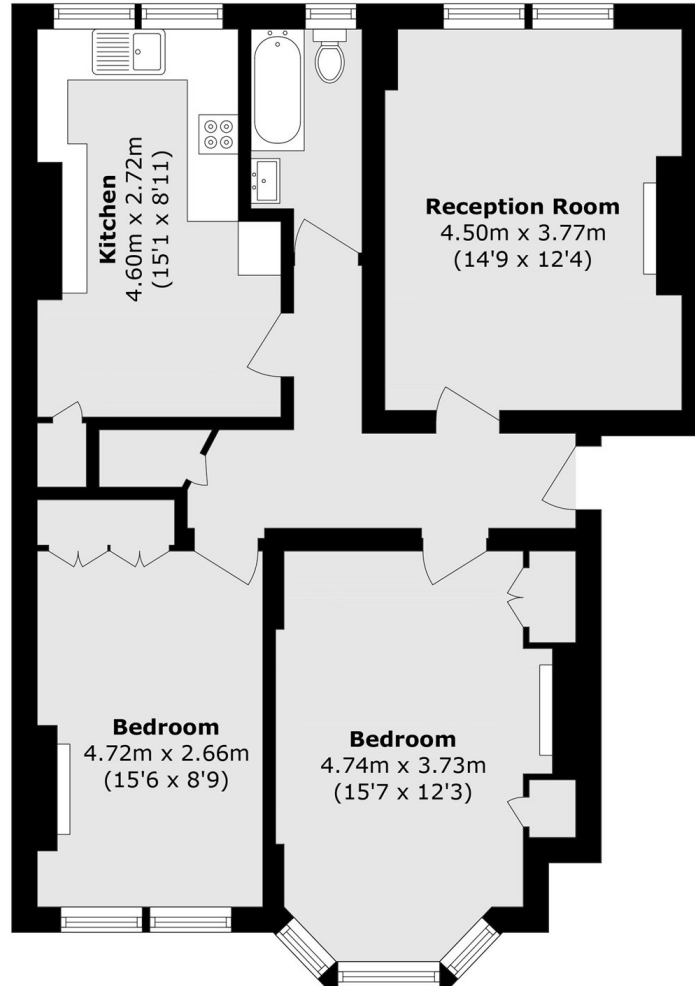
A two bedroom apartment set within a gated development. This property has great proportions, resident caretakers and a would make an ideal London home.

Elm Park Mansions is a gated development located on Park Walk which is a pretty tree-lined street situated between the King's Road and Fulham Road.

Features

- Two Bedrooms
- Gated Community
- Caretaker
- Second Floor
- Separate Kitchen
- Gated Development

Park Walk, London, SW10



Second Floor

Total area (approx.): 72 sq. m (775 sq. ft)