



St. Marys Road, NW10

£399,950

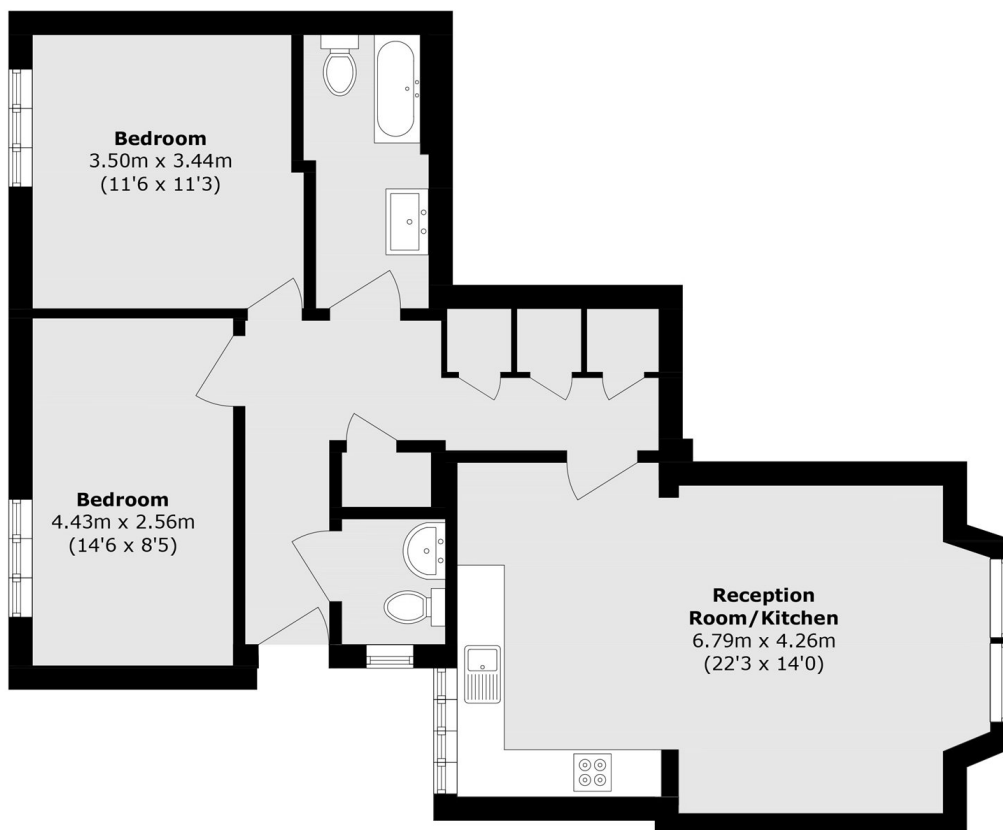
A spacious two double bedroom ground floor flat with a patio courtyard and its own entrance to the side of the building. The property has a large open plan kitchen and reception room to the front with high ceilings, the bedrooms are to the rear, shown in good condition throughout, and is available chain-free.

St. Marys Road is a tree-lined residential street in close proximity to the shops and amenities in Harlesden, and near to Kensal Rise and Queen's Park. Transport links include Harlesden (Bakerloo & Overground) and Willesden Junction (Bakerloo & Overground).

Features

- Two Double Bedrooms
- Open Plan Kitchen & Reception
- Good Condition Throughout
- Own Entrance
- Patio Courtyard
- Chain-Free

St. Marys Road, London, NW10



Total area (approx.): 74.5 sq. m (801.9 sq. ft)