

## Elsham Road, W14

£1,675 Per calendar month

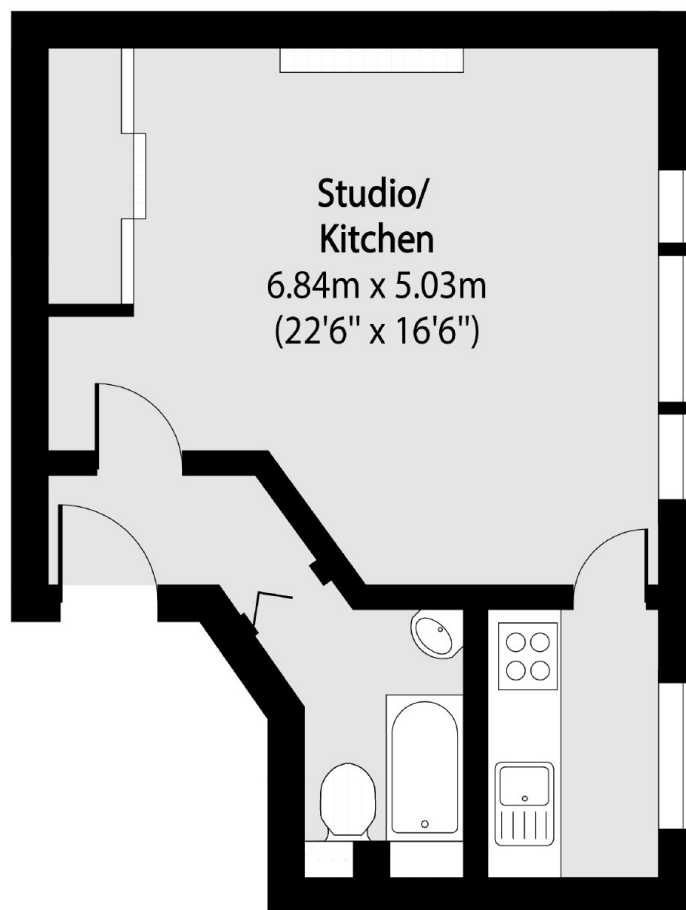
A bright and spacious studio with original wood flooring in excellent condition throughout. The flat offers a large studio room and is perfect for the single professional.

Elsham Road is perfectly located for access to both Holland Park and High Street Kensington. It is also located under 0.4 miles from both Kensington Olympia Station and Shepherds Bush Station (central line)

### Features

Elsham Road  
Large Studio  
Bright & Spacious  
Separate Kitchen  
Wood Floors  
Period Features

Elsham Road,  
London, W14



Total area (approx): 29.31 sq m (315 sq. ft)

**Dexters**

Shepherds Bush and Brook Green  
53 Shepherds Bush Green  
London  
W12 8PS  
Lettings  
020 8723 8899

Energy Rating: C. We aim to make our particulars both accurate and reliable. However they are not guaranteed; nor do they form part of an offer or contract. If you require clarification on any points then please contact us, especially if you're traveling some distance to view. Please note that appliances and heating systems have not been tested and therefore no warranties can be given as to their good working order.

 **RICS** | Regulated  
Estate Agent  
and Letting Agent

[dexters.co.uk](http://dexters.co.uk)