

# Frank Harris & Co.



## Knollys House, WC1H

£600,000

Introducing a red brick mansion block in Bloomsbury, this apartment features two double bedrooms, a separate kitchen and benefits from high ceilings and wooden flooring throughout.

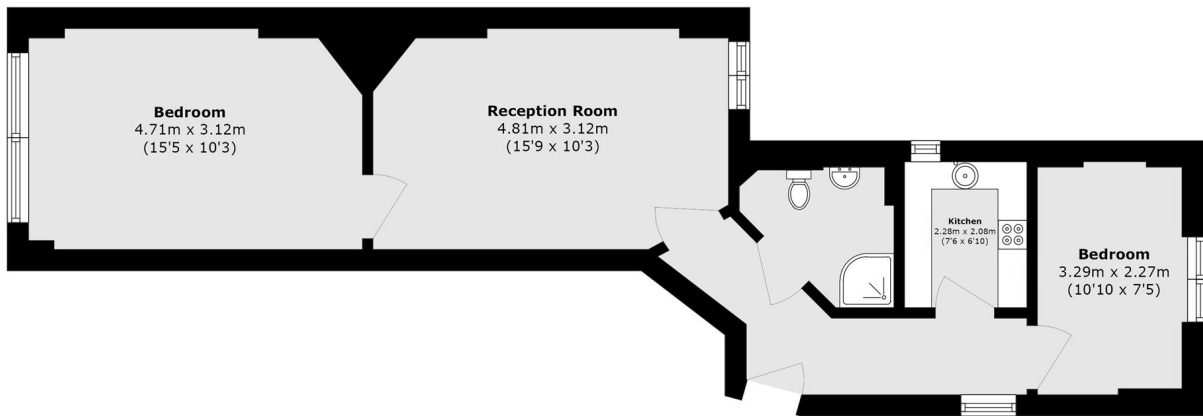


Transport links are available from Russell Square, King's Cross St Pancras and Euston station. Shopping amenities can be found on Marchmont Street and at the Brunswick Centre.

- Two Bedrooms • Period Mansion Block • Central Location •
- Chain Free • Communal Garden • High Ceilings •



# Frank Harris & Co.



Total area (approx.): 52.2 sq. m (561.8 sq. ft)

Frank Harris & Co. Bloomsbury and Kings Cross

81 Marchmont Street,

London, WC1N 1AL

020 7405 4444

[bloomsburysales@frankharris.co.uk](mailto:bloomsburysales@frankharris.co.uk)

Energy Rating: . We aim to make our particulars both accurate and reliable. However they are not guaranteed; nor do they form part of an offer or contract. If you require clarification on any points then please contact us, especially if you're traveling some distance to view. Please note that appliances and heating systems have not been tested and therefore no warranties can be given as to their good working order.

