



Tudor Road, Hayes, UB3 2QB
£550,000

We are delighted to present to the market this spacious three bedroom family home which is set on this LARGE CORNER PLOT with plenty of potential to extend. Well presented, the property briefly features an inviting entrance hall, a bright and well proportioned living/dining room, a fitted kitchen, and a modern family bathroom. Externally, the property benefits from off street parking for several vehicles, a delightful rear garden, and a detached garage accessed via its own private driveway. Occupying a substantial corner plot, the home offers significant scope for a double storey side extension (subject to the usual planning constraints).

Situated on a popular residential road, the property is ideally positioned close to the Uxbridge Road, providing a wide range of shopping facilities and convenient bus routes with direct links to Hayes Town Centre & Underground Station (Elizabeth Line), Uxbridge Town Centre (Piccadilly & Metropolitan Lines), and major road connections including the A40, M25 and M4.



ENTRANCE HALL

Frost aspect double glazed leaded light frosted glass window, laminate flooring, dado rail, understairs storage cupboard, radiator

THROUGH LOUNGE/ DINER

Front aspect double glazed leaded light window, rear aspect double glazed leaded light sliding door, laminate flooring, feature fireplace, radiator, coved ceiling

KITCHEN

Rear aspect double glazed leaded light door, rear aspect double glazed leaded light window, part tiled walls, tiled flooring, radiator, range of base and eye level units, sink with drying rack, downlighting, four ring induction hob with extractor hood, a range of integrated appliances.

LANDING

Side aspect double glazed window, dado rail, access to loft hatch,

BATHROOM

Rear aspect double glazed leaded light frosted glass window, panel enclosed bath with shower attachment, part tiled walls, tiled flooring, radiator, low level wc, vanity unit incorporating wash hand basin

BEDROOM ONE

Front aspect double glazed leaded light window, radiator, built in wardrobes

BEDROOM TWO

Rear aspect double glazed leaded light window, built in wardrobes, laminate flooring, radiator

BEDROOM THREE

Front aspect double glazed leaded light window, radiator

GARDEN

Panel enclosed fence, patio area, mainly laid to lawn, rear garage

COUNCIL TAX

London Borough of Hillingdon -
Band D - £2,045.46

N.B. WE RECOMMEND YOUR SOLICITOR VERIFIES THIS BEFORE EXCHANGE OF CONTRACTS.

DISTANCE TO STATIONS

Hayes & Harlington (1.4miles) -
Elizabeth Line / Great Western
Railway



73 Victoria Road, Ruislip Manor, Middlesex, HA4 9BH

T: 01895 699077


ruislipmanor@gibsonhoney.co.uk

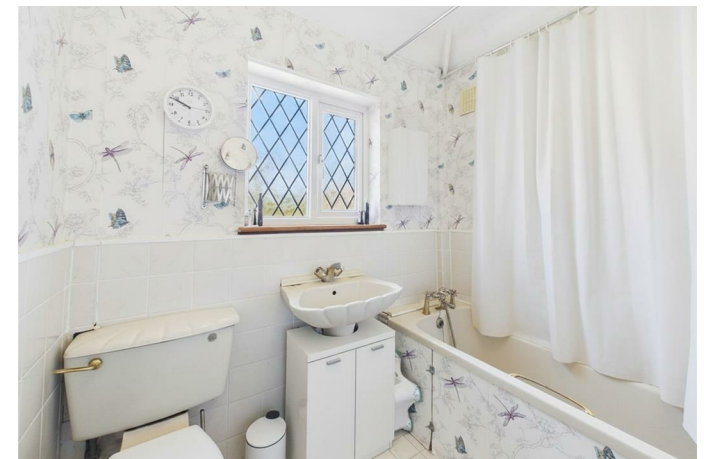
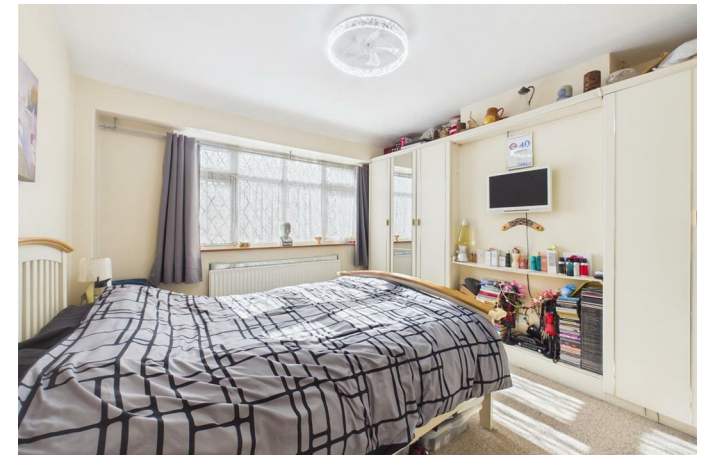
www.gibsonhoney.co.uk



gibsonhoney



Energy Efficiency Rating		
	Current	Potential
Very energy efficient - lower running costs		
(92 plus) A		
(81-91) B		
(69-80) C		
(55-68) D		
(39-54) E		
(21-38) F		
(1-20) G		
Not energy efficient - higher running costs		
England & Wales	EU Directive 2002/91/EC 	



You may download, store and use the material for your own personal use and research. You may not republish, retransmit, redistribute or otherwise make the material available to any party or make the same available on any website. These particulars, whilst believed to be accurate are set out as a general outline only for guidance and do not constitute any part of an offer or contract. Intending purchasers should not rely on them as statements or representation of fact, but must satisfy themselves by inspection or otherwise as to their accuracy. No person in this firm's employment has the authority to make or give any representation or warranty in respect of the property.