



Saville Road, London, W4
Guide Price £1,250,000

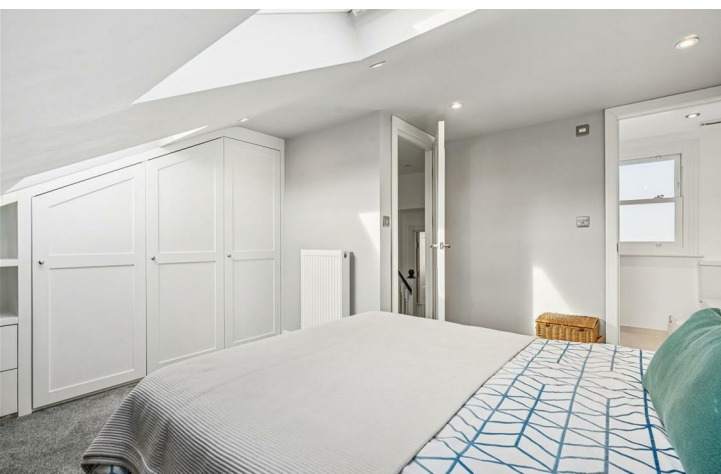
WHITMAN & CO.

SALES · LETTINGS · COMMERCIAL



An immaculately presented, recently refurbished four-bedroom period property located on this quiet cul-de-sac section of Saville Road, a short walk from numerous amenities. The house has been fully extended into the loft and on the ground floor with the accommodation providing a 24' south-facing reception room with a bay window and extensive cabinetry, a spacious kitchen/breakfast room with bi-fold doors leading onto a secluded walled garden, four double bedrooms (two with fitted wardrobes), a large family bathroom with freestanding bath and walk-in shower and a further shower room ensuite to the top floor bedroom.

Saville Road is close to a number of parks, gastro pubs and shops, with Chiswick High Road's more extensive amenities easily accessible. Transport links include Turnham Green and Chiswick Park tube stations, South Acton Mildmay station, local bus routes and the A4/M4 for routes in and out of London. The house is within the catchment area of Southfield Primary School (Ofsted rated outstanding).



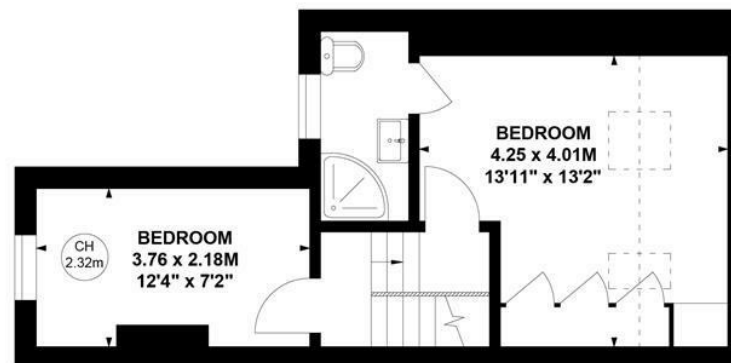
Saville Road, W4

Approximate gross internal area
120.07 sq m / 1292 sq ft

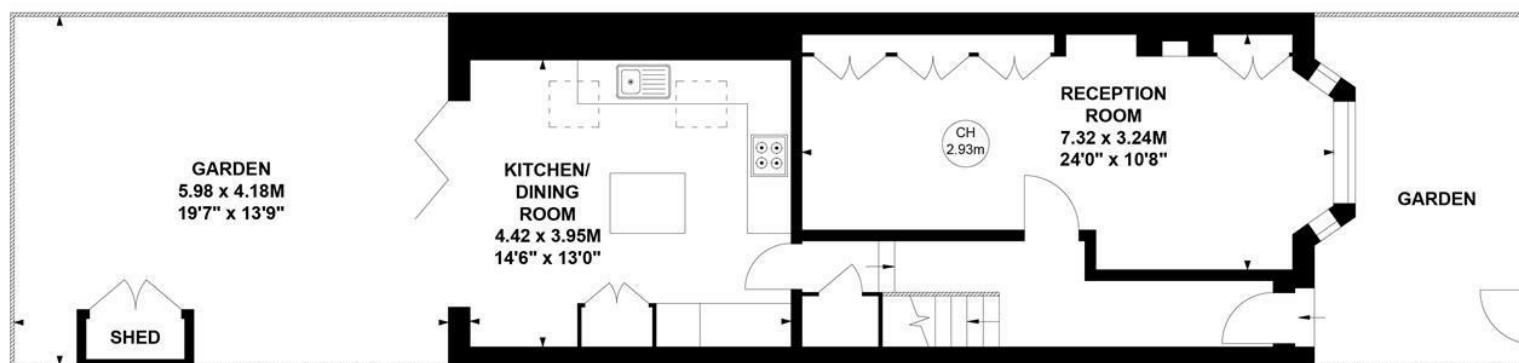
Key :
CH - Ceiling Height



First Floor



Second Floor



Ground Floor

Not to scale, for guidance only and must not be relied upon as a statement of fact.
All measurements and areas are approximate only

- Recently refurbished period property
- Four double bedrooms/two baths
- Kitchen/breakfast room

- Secluded walled garden
- 24' South facing reception room
- Quiet cul-de-sac location

Tenure - Freehold
Local Authority - Ealing
Council Tax - Band E

