



Guide Price
£325,000

Freehold

2x  1x  1x 

**Hirschield Drive,
Leybourne, West
Malling, Kent, ME19**

Wards
Helping you move forwards



Main features

- Modern mid terraced house that is priced to sell
- Chain free
- Well proportioned accommodation
- Ideal first purchase or investment
- Allocated parking & close to shops

Accommodation

GROUND FLOOR

Entrance Hall
 Cloakroom
 Kitchen: 10'6 x 8'5 (3.20m x 2.57m)
 Living Room: 15'6 x 11'6 (4.73m x 3.51m)

FIRST FLOOR

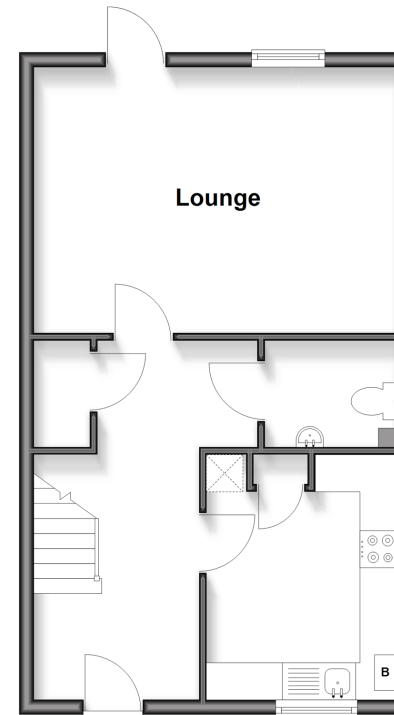
Landing
 Bedroom 1: 12'11 x 12'8 (3.94m x 3.86m)
 Bedroom 2: 15'6 x 9'5 (4.73m x 2.87m)

OUTSIDE

Garden
 Allocated Parking

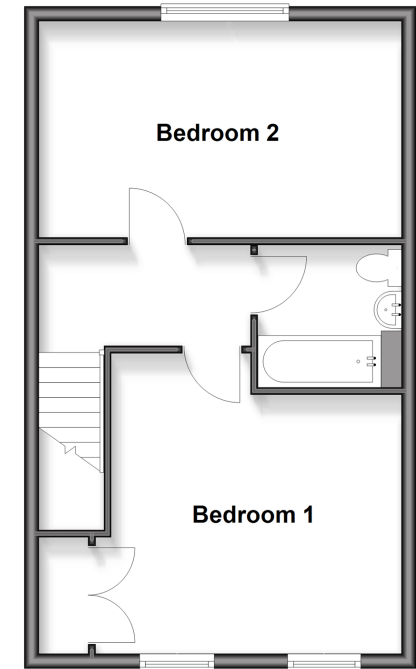
Ground Floor

Approx. 42.3 sq. metres (454.9 sq. feet)



First Floor

Approx. 42.3 sq. metres (454.9 sq. feet)



Call Kings Hill - 01732 22211 ■ wardsof Kent.co.uk

- Legal advice should be taken to verify fixtures/fittings, planning, alterations and/or lease details
- Appliances & services are untested, dimensions are approximate and floor plans are not to scale



12405423/20260317/SW/BC