



## Heol Onnen, offers over £185,000

- Two Bedroom
- Semi Detached
- Well Presented
- Generous Garden
- Off Road Parking
- No Chain
- EPC Rating: E



 2  1  1



## About the property

This attractive two-bedroom semi-detached home in North Cornelly is presented in good condition and offers a welcoming blend of comfort and practicality. To the front, there is off-road parking, making everyday life more convenient. Inside, the property provides well-proportioned living spaces, including two bright bedrooms that are ideal for a couple, small family, or anyone seeking a manageable home. The highlight is the generous rear garden with garden room, which provides ample space for outdoor entertaining, gardening, or simply relaxing in a private setting. Located in a popular residential area, the home benefits from easy access to local amenities, schools, and transport links, making it a great choice for those looking to settle in a friendly community with excellent connections. To book your appointment please call Peter Alan Porthcawl on 01656 771600 or book your appointment online 24/7 at [www.peteralan.co.uk](http://www.peteralan.co.uk).



## Accommodation

### Lounge

14' 9" x 11' 4" ( 4.50m x 3.45m )

### Kitchen

13' 8" x 9' 10" ( 4.17m x 3.00m )

### Utility Area

### First Floor

### Bedroom One

14' 9" x 9' 2" ( 4.50m x 2.79m )

### Bedroom Two

11' 2" x 10' 2" ( 3.40m x 3.10m )

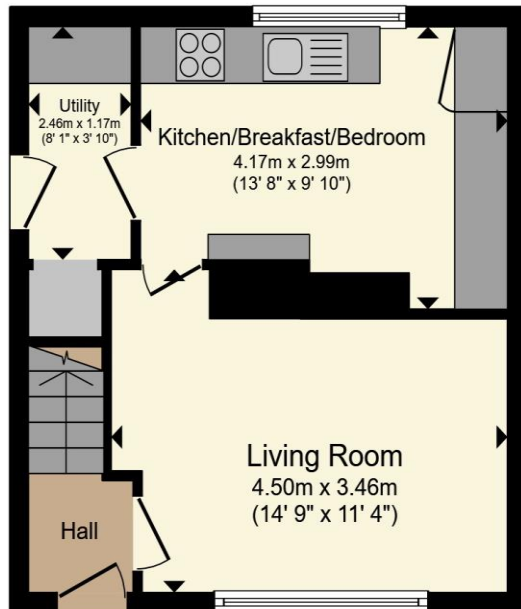
### Bathroom



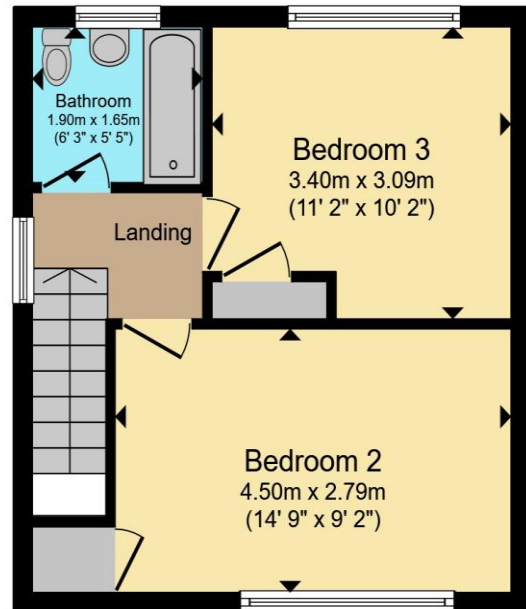
01656 771600

porthcawl@peteralan.co.uk

## Floorplan



**Ground Floor**



**First Floor**

Total floor area 65.1 m<sup>2</sup> (700 sq.ft.) approx

This floor plan is for illustrative purposes only. It is not drawn to scale. Any measurements, floor areas (including any total floor area), openings and orientation are approximate. No details are guaranteed, they cannot be relied upon for any purpose and they do not form part of any agreement. No liability is taken for any error, omission or misstatement. A party must rely upon its own inspection(s). Powered by [www.propertybox.io](http://www.propertybox.io)



## Important Information

Note while we endeavour to make our sales details accurate and reliable, if there is any point which is of particular interest to you, please contact the office and we will be pleased to confirm the position for you. We have not personally tested any apparatus, equipment, fixtures, fittings or services and cannot verify they are in working order or fit for their purposes. Nothing in these particulars is intended to indicate that carpets or curtains, furnishings or fittings, electrical goods (whether wired or not). Gas fires or light fittings or any other fixtures not expressly included form part of the property offered for sale. This computer generated Floorplan, if applicable, is intended as a general guide to the layout and design of the property. It is not to scale and should not be relied upon for dimensions. Tenure: We cannot confirm the tenure of the property as we have not had access to the legal documents. The buyer is advised to obtain verification from their solicitor or surveyor.

Peter Alan Limited is registered in England and Wales under company number 2073153, Registered Office is Cumbria House, 16-20 Hockliffe Street, Leighton Buzzard, Bedfordshire, LU7 1GN. VAT Registration Number is 500 2481 05. For activities relating to regulated mortgages and non-investment insurance contracts, Peter Alan Limited is an appointed representative of Connells Limited which is authorised and regulated by the Financial Conduct Authority. Connells Limited's Financial Services Register number is 302221. Most buy-to-let

