

Property ref: 80144

Hewitt, Reading, RG1 7LY

£1,250 PCM

HASLAMs
Lettings



A one bedroom, thirteenth floor apartment within this impressive development in Reading town centre. The property is within close proximity of The Oracle shopping centre and mainline railway station. Reading Borough Council tax band C.

Water supply: Mains

Drainage info: Mains

Electricity supply: Mains

Broadband/Mobile Info: Connections available. For an indication of specific speeds and supply of Broadband and Mobile, we advise applicants go to the Ofcom website Broadband and Mobile Coverage Checker.

Available Now

- One bedroom apartment; Open plan living room/kitchen with wooden flooring
- Fully fitted kitchen with integrated appliances
- Main family-sized bathroom; EPC rating C
- £65 per month on top of the rent to cover hot water and heating via communal boiler
- Close proximity to Reading mainline station
- Furnished; No parking; Managed by HASLAMs

*Fees For Assured Shorthold Tenancies: when you rent a property from us you will be required to pay a sum equivalent to one weeks' rent for a holding deposit. Upon successful application, this amount will be off set against your first months' rent. You will also be required to pay a security deposit equivalent to 5 weeks' rent which will be held and protected in line with Deposit legislation. For more information about our fees please visit: www.haslams.net
Fees for all other tenancies (Non Housing Act Tenancies / Company Lets): when you rent a property from us we will charge you a one-off fee per property. This charge is the equivalent of 15 days of the monthly rental charge (+VAT) with a minimum fee of £450 (inc.VAT) up to a maximum of £650 (inc.VAT). Other fees may apply depending on your circumstances.

0118 960 1055

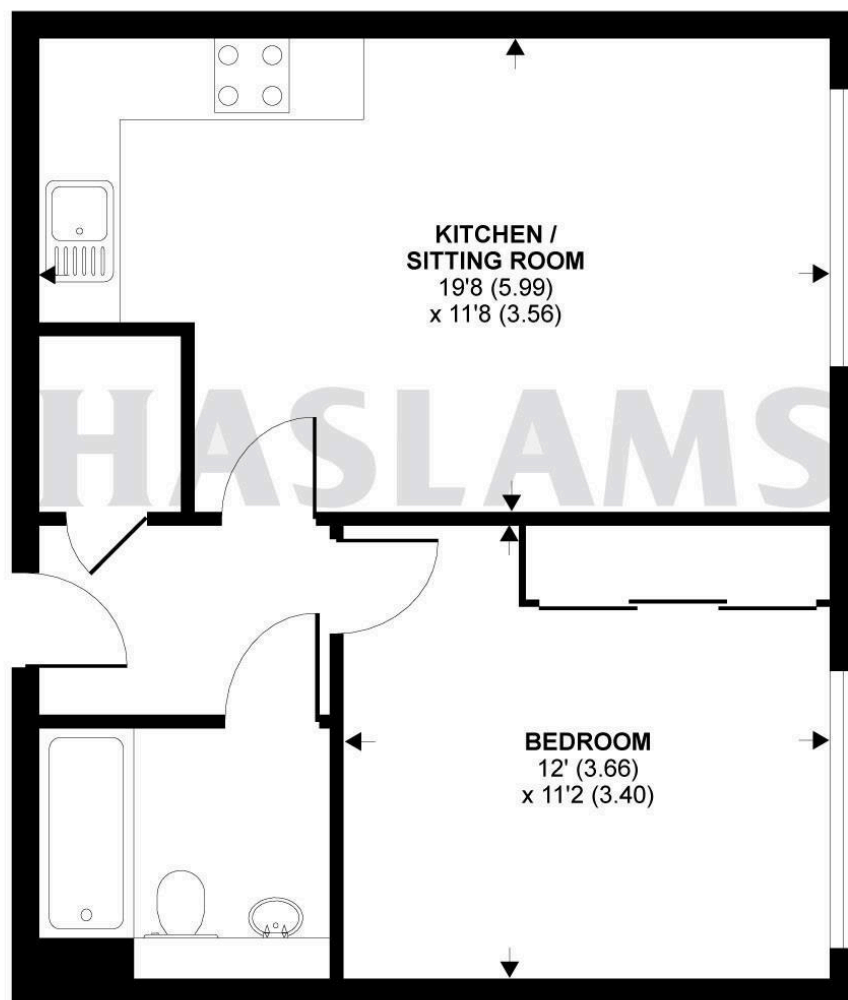
lettings@haslams.net www.haslams.net

Haslams Estate Agents Ltd, 159 Friar Street, Reading, Berkshire, RG1 1HE



Hewitt, Alfred Street, Reading, RG1

APPROX. GROSS INTERNAL FLOOR AREA 450 SQ FT 41.8 SQ METRES



Whilst every attempt has been made to ensure the accuracy of the floor plan contained here, measurements of doors, windows and rooms are approximate and no responsibility is taken for any error, omission or misstatement. These plans are for representation purposes only as defined by RICS Code of Measuring Practice and should be used as such by any prospective purchaser. Specifically no guarantee is given on the total square footage of the property if quoted on this plan. Any figure given is for initial guidance only and should not be relied on as a basis of valuation.

Copyright nichecom.co.uk 2015 Produced for Haslams REF : 72531