

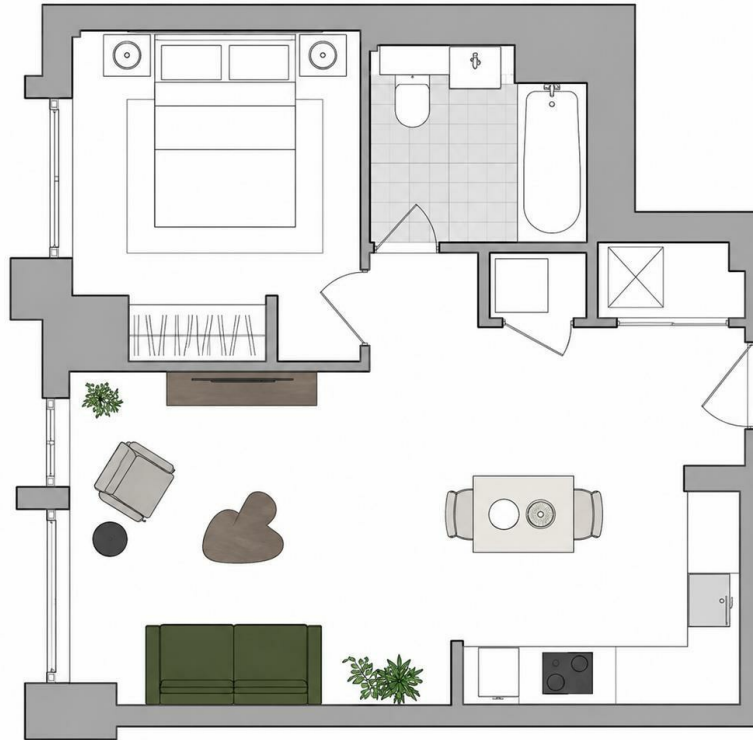
## Bouchon Point, 7 Cendal Crescent

, London E1 2FU

- Studio Apartment
- Floor-to-ceiling windows
- 24-hour concierge service
- Residents' communal lounge and meeting rooms
- CTB-D
- Bright open-plan living
- Secure gated entrance
- Excellent transport links: close to Aldgate East and Whitechapel stations
- EPC-B

**£2,495 Per Month**

Local Authority **Tower Hamlets**  
Council Tax Band **D**  
EPC Rating **B**



**London Office Office**  
Spaces Victoria, 25 Wilton Road, Pimlico,  
London, SW1V 1LW

**Contact**  
020 3084 3094  
[XL@londonvictoriagroups.co.uk](mailto:XL@londonvictoriagroups.co.uk)  
[www.londonvictoriagroups.co.uk](http://www.londonvictoriagroups.co.uk)

Agents Note: Whilst every care has been taken to prepare these particulars, they are for guidance purposes only. All measurements are approximate and for general guidance purposes only and whilst every care has been taken to ensure accuracy, they should not be relied upon and potential buyers/tenants are advised to recheck the measurements.