



Charter Street
Chatham | ME4 5RY



Charter Street , Chatham, ME4 5RY

CR Real Estate are delighted to present this beautifully refurbished three-bedroom mid-terrace home, offered to the market with no onward chain, situated on Charter Street, Chatham.

Recently renovated to a high standard throughout, this attractive property offers bright, modern accommodation ideal for first-time buyers, growing families, or investors alike.

The ground floor comprises a welcoming living room, a separate dining area, and a stylish contemporary kitchen, creating a practical and versatile living space. Upstairs, there are two well-proportioned bedrooms, with a third bedroom accessed via the second, making it ideal for use as a nursery, home office, dressing room, or guest room.

Externally, the property benefits from a private rear garden, providing the perfect space for outdoor dining, entertaining, or relaxation. A useful cellar offers additional storage and further practicality.

Conveniently located within easy reach of local amenities, schools, and excellent transport links, this fantastic home is ready for immediate occupation and is offered to the market with no onward chain, ensuring a straightforward purchase process.

£225,000



Lounge

12'1 x 9'6 (3.68m x 2.90m)

Dining Room

12'1 x 9'8 (3.68m x 2.95m)

Kitchen

9'3 x 6'1 (2.82m x 1.85m)

Family Bathroom

5'6 x 5'4 (1.68m x 1.63m)

Bedroom

12'1 x 9'6 (3.68m x 2.90m)

Bedroom

12'1 x 9'8 (3.68m x 2.95m)

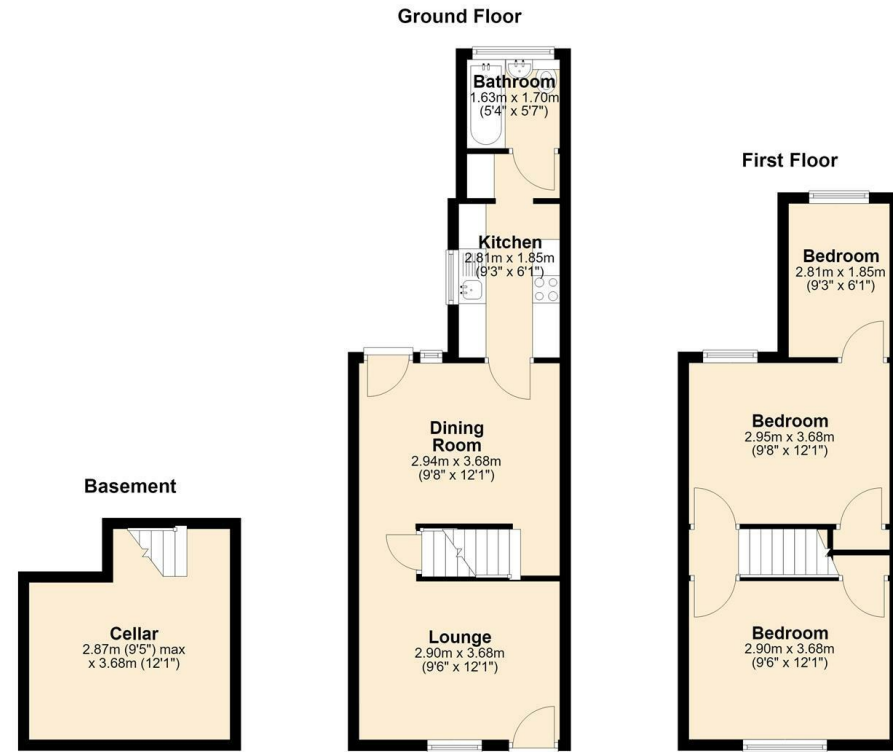
Bedroom

9'3 x 6'1 (2.82m x 1.85m)

Cellar

12'3 x 9'6 (3.73m x 2.90m)





18 - 20 High Street
 Gillingham
 Kent
 ME7 1BB
01634 570057

www.crr realestate.co.uk
twitter.com/CRRealEstateUK
facebook.com/CRRealEstateUK

| Energy Efficiency Rating | | Current | Potential |
|--|--|-------------------------|-----------|
| <i>Very energy efficient - lower running costs</i> | | | |
| (92 plus) A | | | |
| (81-91) B | | | |
| (69-80) C | | | |
| (55-68) D | | | |
| (39-54) E | | | |
| (21-38) F | | | |
| (1-20) G | | | |
| <i>Not energy efficient - higher running costs</i> | | | |
| England & Wales | | EU Directive 2002/91/EC | |

| Environmental Impact (CO ₂) Rating | | Current | Potential |
|---|--|-------------------------|-----------|
| <i>Very environmentally friendly - lower CO₂ emissions</i> | | | |
| (92 plus) A | | | |
| (81-91) B | | | |
| (69-80) C | | | |
| (55-68) D | | | |
| (39-54) E | | | |
| (21-38) F | | | |
| (1-20) G | | | |
| <i>Not environmentally friendly - higher CO₂ emissions</i> | | | |
| England & Wales | | EU Directive 2002/91/EC | |



CR Real Estate endeavour to maintain accurate depictions of properties in Virtual Tours, Floor Plans and descriptions, however, these are intended only as a guide and purchasers must satisfy themselves by personal inspection.