



Southern Road, Thame - OX9 2EE

Guide Price £600,000

 **TIM RUSS**
& Company



Southern Road

Thame, Oxfordshire

- Prime location just a stone's throw from the vibrant town centre and Cuttlebrook Nature Reserve
- Rarely available three-bedroom semi-detached family home full of charm and character
- Offered to the market with no onward chain
- Spacious, light-filled layout with high ceilings and large windows throughout
- Bright kitchen/dining room with utility space and bi-folding doors to the rear garden
- Generous sitting room featuring a fireplace
- Three well-proportioned bedrooms, family bathroom, a wet room and converted loft ideal as a study or office
- Attractive block-paved driveway, garage, and low-maintenance rear garden

Council Tax band: D

Tenure: Freehold

EPC Energy Efficiency Rating: C



Southern Road

Thame, Oxfordshire

Perfectly positioned in a highly sought-after location, just a stone's throw from the picturesque and vibrant town centre and Cuttlebrook Nature Reserve, this rarely available three-bedroom semi-detached family home offers charm, character, and convenience.

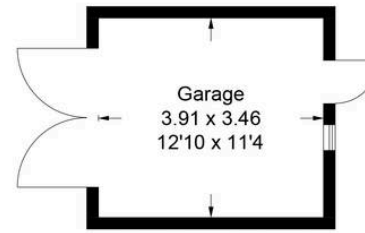
Presented to the market with no onward chain, the property boasts a spacious and light-filled layout, enhanced by high ceilings and large windows throughout.

The welcoming entrance hall leads into a bright and generous kitchen/dining room, featuring a useful utility space and bi-folding doors opening onto the rear garden. The dining area flows seamlessly into the spacious sitting room, complete with a feature fireplace, while a modern wet room completes the ground floor accommodation.

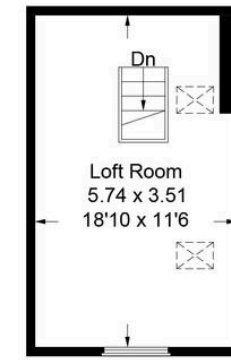
Upstairs, there are three well-proportioned bedrooms and a family bathroom. The converted loft provides a versatile additional space, ideal for a study or home office.

Externally, the block-paved driveway has been attractively landscaped, offering off-street parking and a garage, while the rear garden is designed for low-maintenance enjoyment.

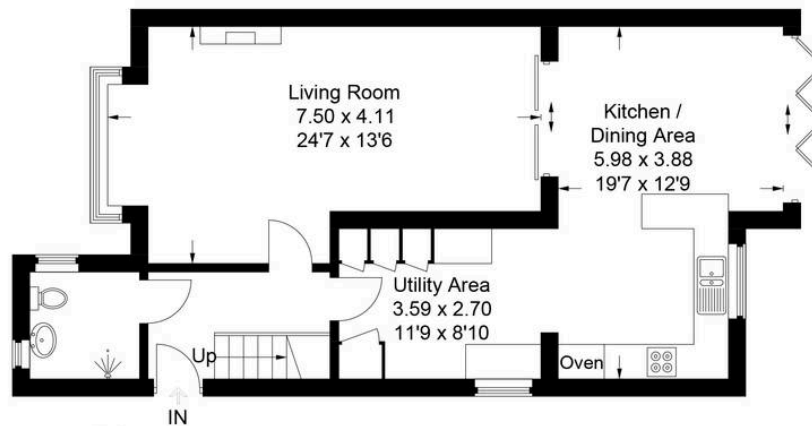




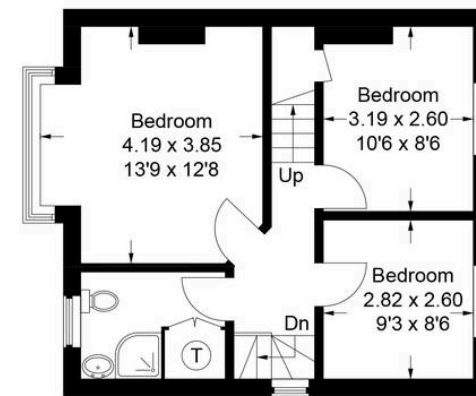
(Not Shown In Actual Location / Orientation)



Second Floor



Ground Floor



First Floor

31 Southern Road

Approximate Gross Internal Area
 Ground Floor = 70.2 sq m / 756 sq ft
 First Floor = 42.9 sq m / 462 sq ft
 Second Floor = 20.1 sq m / 216 sq ft
 Garage = 13.4 sq m / 144 sq ft
 Total = 146.6 sq m / 1,578 sq ft

This plan is for layout guidance only. Not drawn to scale unless stated. Windows and door openings are approximate. Whilst every care is taken in the preparation of this plan, please check all dimensions, shapes and compass bearings before making any decisions reliant upon them.

© CJ Property Marketing Ltd Produced for Tim Russ & Company



Tim Russ and Company

Tim Russ & Co, 112 High Street - OX9 3DZ

01844 217722 • thame@timruss.co.uk • timruss.co.uk/

By law we must verify every seller and buyer for anti-money laundering purposes.

Checks are carried out by our partners at Lifetime Legal for a non-refundable £65 (incl. VAT) fee, paid directly to them.

For more information please visit our website.



Particulars described on our website and in marketing materials are for indicative purposes only; their complete accuracy cannot be guaranteed. Details such as boundary lines, rights of way, or property condition should not be treated as fact. Interested parties are advised to consult their own surveyor, solicitor, or other professional before committing to any expenditure or legal obligations.