



Woodlands Avenue, West Byfleet, KT14

Offers Over £835,000

🛏️ 4 🚿 2 🚗 3



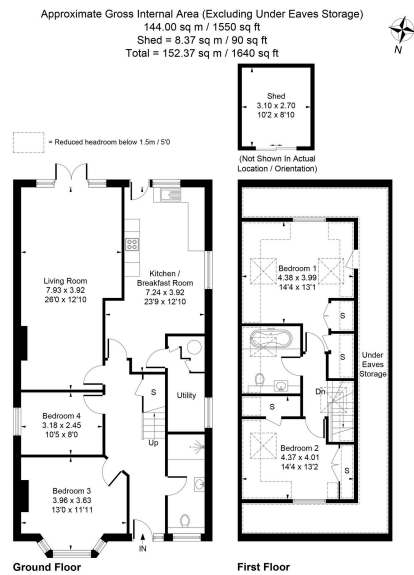
Situated on a highly sought-after road and within easy level walking distance of West Byfleet mainline station, offering direct services to London Waterloo in approximately 30 minutes, this immaculately presented four double bedroom chalet-style bungalow provides approximately 1,640 sq ft of stylish and versatile living accommodation.

Beautifully updated in recent years by the current vendors, the property is presented to an exceptional standard throughout. The ground floor features a contemporary kitchen/breakfast room, separate utility room, spacious lounge, two generous double bedrooms, and a modern shower room, offering flexible living arrangements ideal for families or downsizers alike.

Upstairs, there are two further well-proportioned double bedrooms with useful under-eaves storage, complemented by a sleek and modern family bathroom.

Externally, the property benefits from a deceptively spacious driveway providing ample off-street parking, together with gated side access leading to a beautifully maintained south-facing garden. Designed for low-maintenance living, the garden is predominantly laid with artificial lawn and features an excellent patio area, perfect for outdoor entertaining and relaxing.





- Highly sought-after residential road in West Byfleet
- Direct trains to London Waterloo in approximately 30 minutes
- Recently updated by the current vendors
- Four well-proportioned double bedrooms
- Spacious driveway providing ample off-street parking
- Walking distance to West Byfleet mainline station
- Immaculately presented throughout
- Approximately 1,640 sq ft of versatile accommodation
- Contemporary kitchen/ breakfast room with separate utility room
- South-facing low-maintenance garden with patio area

