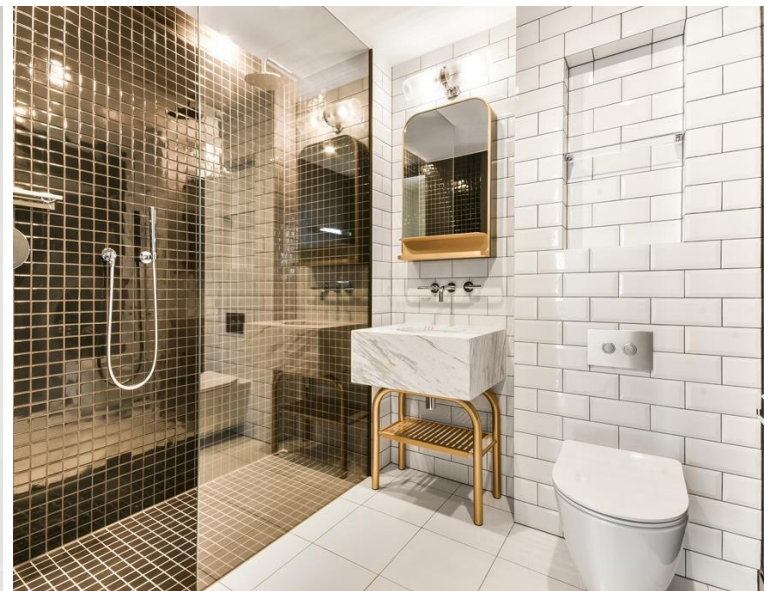
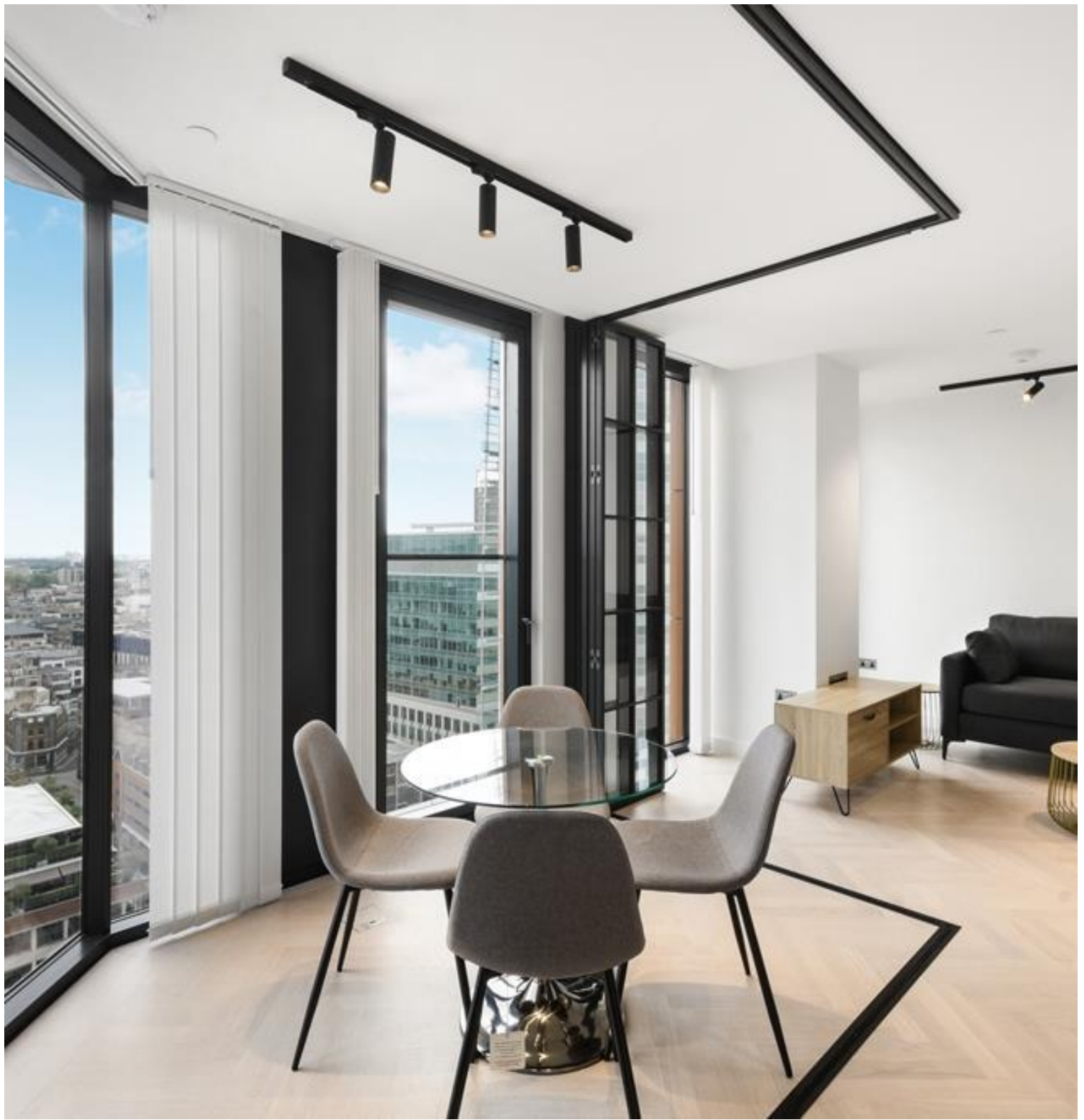




## Sun Street, London EC2A

Price £995 per week - Furnished







## Description

A stunning 1 bedroom apartment in the sought after and iconic One Crown Place, EC2, situated in the City of London.

This luxury 1 bedroom apartment is situated on the 14th floor and a reception room with winter garden, fully fitted kitchen, double bedroom with large fitted wardrobes and oak herringbone flooring.

The development has a high specification with comfort cooling and benefits from fantastic on site amenities which include 24 hour concierge residents' lounge, screening room, workhub, gym, private dining room, treatment room and communal terrace. One Crown boasts a fantastic location, a stone's throw from Liverpool Street Station (approximately 0.3 miles) and Moorgate Station (approximately 0.3 miles).

As well as paying the rent, you may also be required to make the following permitted payments. If your tenancy does not qualify as an AST, additional fees may apply. Please visit [jll.co.uk/fees](http://jll.co.uk/fees) for details of fees which may be payable when renting a property

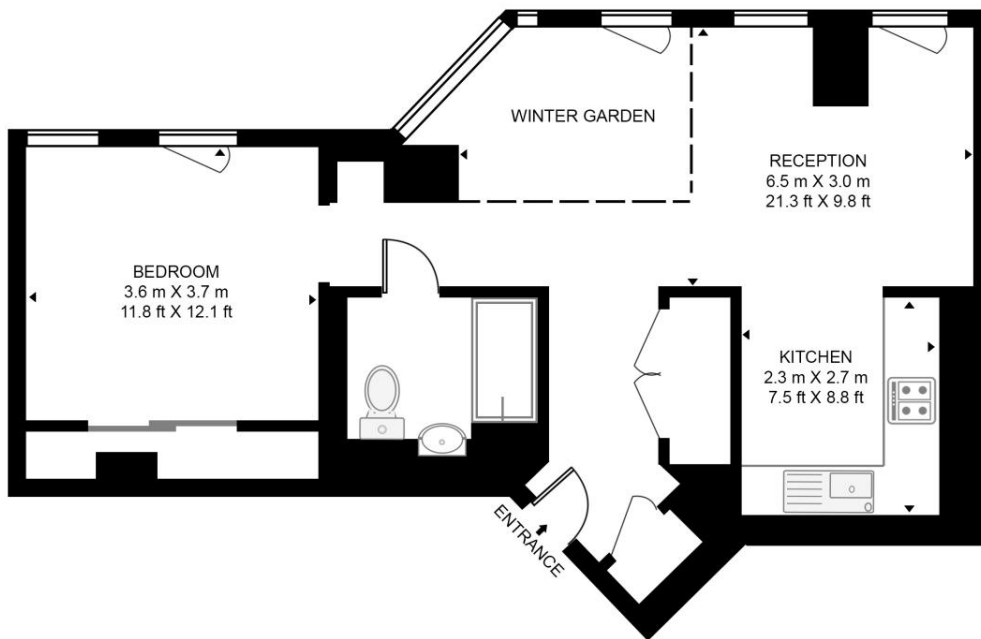
- 1 Bedroom
- 1 Bathroom
- 14th Floor
- Winter Garden
- 24 hour concierge
- On-site leisure facilities including gym, resident's lounge and screening room
- 0.3 miles from Liverpool Street Station
- Approx. 573 sq ft (53.2 sq m)
- Furnished
- EPC: B

# Floorplan

573 sq ft | 53 sq m

## ONE CROWN PLACE, 19 SUN STREET

APPROXIMATE GROSS INTERNAL FLOOR AREA 611 SQ.FT (56.8 SQ.M)



FOURTEENTH FLOOR

**HDVA**

This floor plan has been defined by the RICS Code of Measurement. This floor plan and all others are for approximate representative purposes only and upon usage is agreed to as such by the client.

WWW: [hdvirtualart.com](http://hdvirtualart.com) | TEL: 0203.974.1567 | EMAIL: [info@hdvirtualart.com](mailto:info@hdvirtualart.com)

City  
25 Walbrook The Walbrook  
Building,  
London EC4N 8AF  
+4420 7337 4000

*Urban living, your way.*

[jll.co.uk/residential](http://jll.co.uk/residential)

© 2019 Jones Lang LaSalle IP, Inc. All rights reserved. All information contained herein is from sources deemed reliable; however, no representation or warranty is made to the accuracy thereof.

