



Sunmead Road, TW16

£999,950

A beautifully presented period home dating from circa 1905, meticulously maintained and thoughtfully enhanced by the current owners over many years. Early viewings are highly recommended to avoid disappointment.

Sunmead Road is a great location. Everything Lower Sunbury has to offer is close by including, the River Thames, Sunbury Park and the 'Walled Garden', sought after local schools and Sunbury station which provides a direct service into Waterloo.

Features

- Detached
- Charming Character
- Four Bedrooms
- Study
- Three Bathrooms
- Mature Private Garden



Sunmead Road, TW16

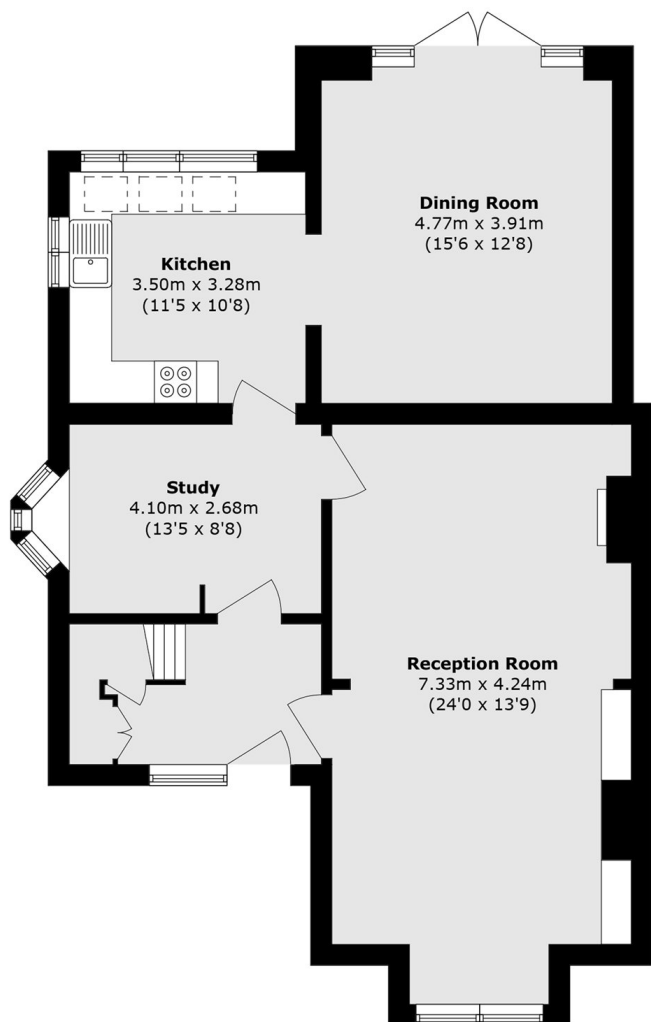
From the moment you step into the welcoming entrance hallway of this impressive character home, you are immediately struck by the exceptional light, space and immaculate presentation throughout. Beautifully maintained by the current owners, the property offers superbly flexible living accommodation perfectly suited to modern family life.

The ground floor features a private study, ideal for home working or quiet retreat, alongside an outstanding double reception room designed for both relaxing and entertaining with family and friends all year round. To the rear, the stunning open plan kitchen and dining area forms the true heart of the home, with patio doors opening onto a mature, private garden perfect for summer barbecues and outdoor gatherings.

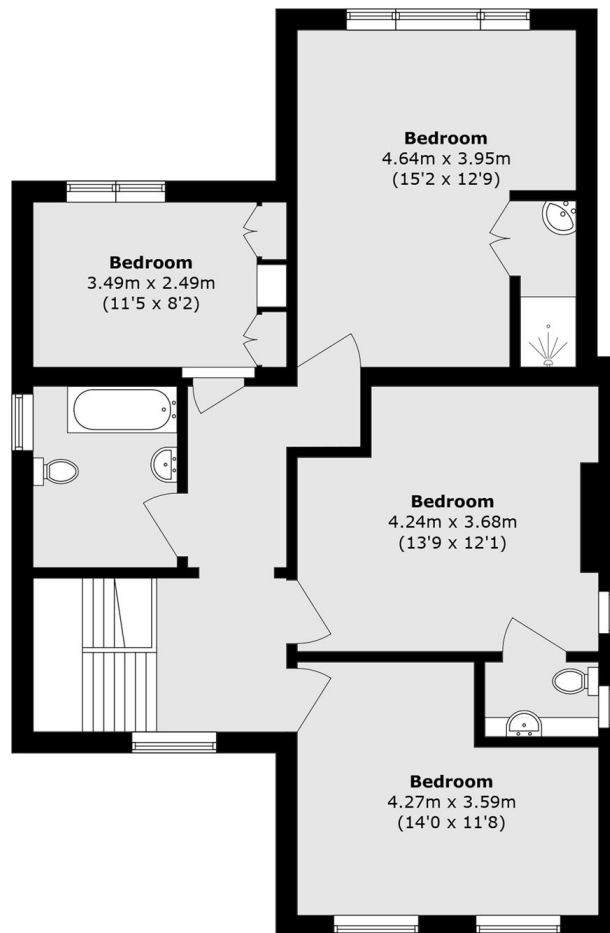
Upstairs, four generously sized bedrooms, including two en suites and a spacious family bathroom, provide the perfect balance of comfort and practicality, making this a truly exceptional forever family home.



Sunmead Road, Sunbury-On-Thames, TW16



Ground Floor



First Floor

Total area (approx.): 165.0 sq. m (1776.0 sq. ft)