



Meadow Court, Littleport CB6 1JW

welcome to

Meadow Court, Littleport

A mid-terrace family home located towards the outskirts of Littleport offering well proportioned throughout with four bedrooms, lounge and separate dining room - viewing highly recommended.

Entrance Porch

With door to:

Lounge

13' 5" x 15' 8" (4.09m x 4.78m)

With radiator, stairs leading to first floor with storage cupboard beneath, double glazed window to front aspect and opening to:

Dining Room

10' 2" x 9' 4" (3.10m x 2.84m)

With radiator, sliding patio doors to rear garden and door to:

Kitchen

14' 4" x 8' 6" (4.37m x 2.59m)

With a fitted range of base units and drawers with work surfaces over to two sides, matching wall units, inset stainless steel sink and drainer unit, space for cooker with extractor over, spaces for washing machine and fridge/freezer, wall mounted gas fire boiler, built in storage cupboards, double glazed window to rear aspect and door to rear garden.

Utility Room/Inner Hall

With internal door to garage and door to:

Cloakroom

Fitted with a suite comprising low level w.c and wash hand basin.





First Floor Landing

With airing cupboard and doors to:

Bedroom One

12' 4" x 9' 7" (3.76m x 2.92m)

With radiator, fitted wardrobes and double glazed window to front aspect.

Bedroom Two

9' 6" x 9' 2" (2.90m x 2.79m)

With radiator and double glazed window to rear aspect.

Bedroom Three

18' 4" x 7' 4" (5.59m x 2.24m)

With radiator and dual aspect with double glazed windows to front and rear aspects.

Bedroom Four

9' 4" x 5' 10" (2.84m x 1.78m)

With radiator, storage cupboard and double glazed window to front aspect.

Family Bathroom

Fitted with a suite comprising panel enclosed bath, pedestal wash hand basin, low level w.c, radiator and double glazed window to rear.

Outside

To the front of the property there is a garden mainly laid to lawn with a driveway leading to the integral garage. The rear garden has an initial paved terraced area and opening to a mainly lawned garden and is fully enclosed by fencing.



view this property online williamhbrown.co.uk/Property/ELY109701



welcome to

Meadow Court, Littleport

- Cul-De-Sac Position
- Modern Kitchen
- Lounge & Separate Dining Room
- Four Bedrooms
- Integral Garage

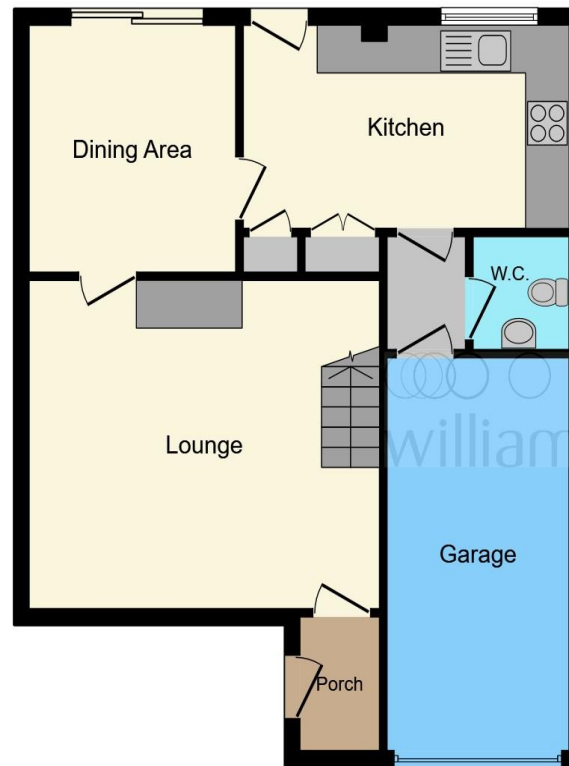
Tenure: Freehold

EPC Rating: C

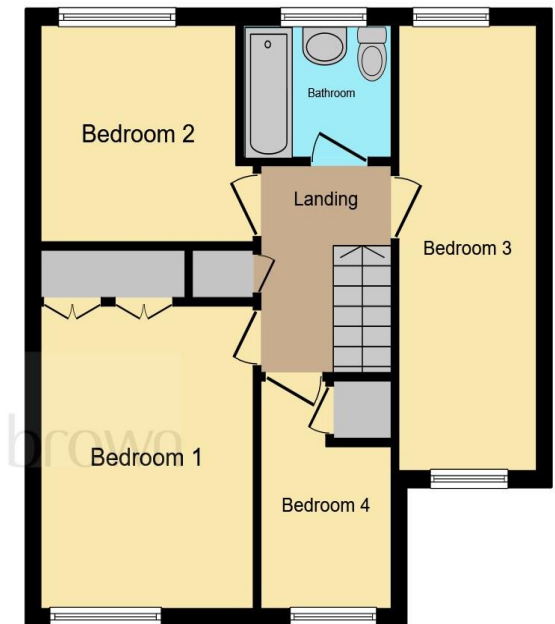
Council Tax Band: B

offers in the region of

£280,000



Ground Floor



First Floor

This floor plan is for illustrative purposes only. It is not drawn to scale. Any measurements, floor areas (including any total floor area), openings and orientation are approximate. No details are guaranteed, they cannot be relied upon for any purpose and they do not form part of any agreement. No liability is taken for any error, omission or misstatement. A party must rely upon its own inspection(s). Powered by www.focalagent.com

view this property online williamhbrown.co.uk/Property/ELY109701



Property Ref:

ELY109701 - 0022

1. MONEY LAUNDERING REGULATIONS Intending purchasers will be asked to produce identification documentation at a later stage and we would ask for your co-operation in order that there is no delay in agreeing the sale. 2. These particulars do not constitute part or all of an offer or contract. 3. The measurements indicated are supplied for guidance only and as such must be considered incorrect. Potential buyers are advised to recheck measurements before committing to any expense. 4. We have not tested any apparatus, equipment, fixtures or services and it is in the buyers interest to check the working condition of any appliances. 5. Where an EPC, or a Home Report (Scotland only) is held for this property, it is available for inspection at the branch by appointment. If you require a printed version of a Home Report, you will need to pay a reasonable production charge reflecting printing and other costs. 6. We are not able to offer an opinion either written or verbal on the content of these reports and this must be obtained from your legal representative. 7. Whilst we take care in preparing these reports, a buyer should ensure that his/her legal representative confirms as soon as possible all matters relating to title including the extent and boundaries of the property and other important matters before exchange of contracts.

William H Brown is a trading name of Sequence (UK) Limited which is registered in England and Wales under company number 4268443, Registered Office is Cumbria House, 16-20 Hockliffe Street, Leighton Buzzard, Bedfordshire, LU7 1GN. VAT Registration Number is 500 2481 05.



william h brown



01353 663311



ely@williamhbrown.co.uk



6 Forehill, ELY, Cambridgeshire, CB7 4AF



williamhbrown.co.uk