



# Fitzjohns Avenue

Hampstead, NW3

£2,550 per month  
(£588.46 per week)

Situated in this magnificent landmark period conversion, a beautiful ground floor apartment accessed via its own private entrance with direct access to a front patio and the use of a large west facing communal gardens in Hampstead.

**CHESTERTONS**





# Fitzjohns Avenue

## Hampstead, NW3

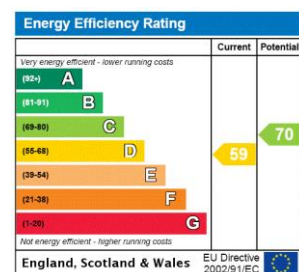
- Beautiful Ground Floor Apartment in Landmark Conversion
- 1 Bedroom, 1 Bathroom, Reception, Open Plan Kitchen
- Own Entrance, Private Front Patio, Communal Gardens,
- Heating/Hot Water Included in the Rent
- Premier Location in Hampstead (Northern Line)





Situated in this magnificent landmark period conversion, a beautiful ground floor apartment accessed via its own private entrance with direct access to a front patio and the use of a large west facing communal gardens. The property is superbly located for all the shops and restaurants in Hampstead (Northern Line). Accommodation comprises spacious reception room with direct access to the patio, open plan fully fitted kitchen, double bedroom, bathroom. Heating and not water is included in the rent.

**Minimum Term:** 12 months  
**Deposit Required:** £2,942.31  
**Local Authority:** London Borough Of Camden  
**Council Tax Band:** E  
**EPC Rating:** D  
**Furnished**



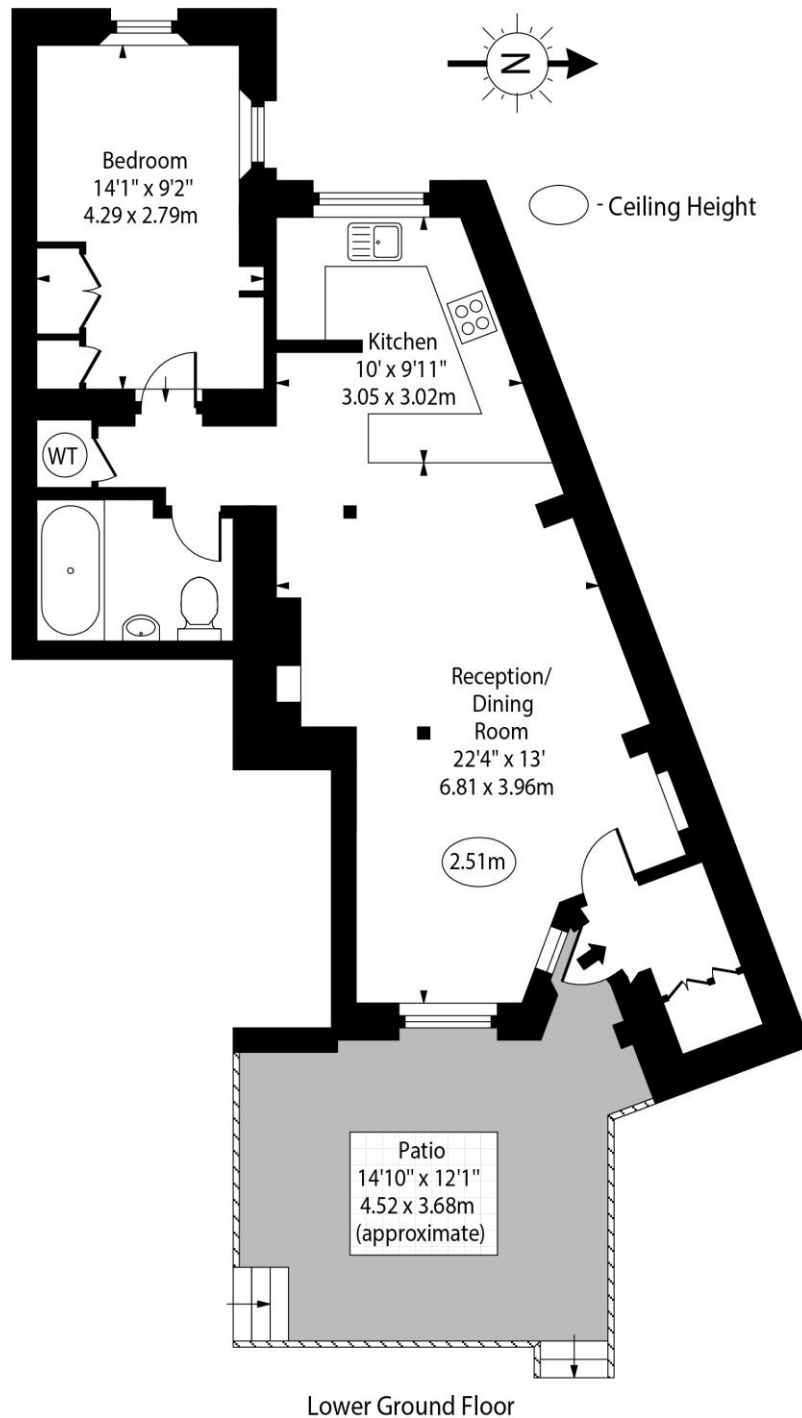
### *Chestertons Hampstead Lettings*

55-56 Hampstead High Street  
 Hampstead  
 London  
 NW3 1QH  
[hampsteadlettingsusers@chestertons.co.uk](mailto:hampsteadlettingsusers@chestertons.co.uk)  
 02077941125  
[chestertons.co.uk](http://chestertons.co.uk)

Additional tenant charges apply (fees apply to non-AST tenancies only)  
 Tenancy Agreement Fee: £300  
 References per Tenant/Guarantor: £60  
 Inventory check (approx. £100 – £250 inc. VAT)  
[chestertons.co.uk/property-to-rent/applicable-fees](http://chestertons.co.uk/property-to-rent/applicable-fees)



Fitzjohns Avenue,  
Hampstead, NW3



Approx Gross Internal Area 621 Sq Ft - 57.70 Sq M

For Illustration Purposes Only - Not To Scale

