



20 Barnhill Road, Marlow, Buckinghamshire, SL7 3EZ

- 3 bedroom family home
- Overlooking Green
- Potential to extend (STP)
- Superb Views
- Catchment for popular schools
- Council Tax Band E / EPC 69C

Property Description

A well presented 3 bedroom family home situated in a popular location and overlooking a green. The accommodation comprises entrance hall, sitting room, dining room, kitchen, 3 bedrooms and bathroom. There is great potential to extend the home subject to planning permission. Outside the property boasts a large and established garden and off road parking. There are superb views to the rear over Marlow.

Marlow offers a delightful array of shops, restaurants, and cultural attractions. The town is renowned for its scenic beauty along the River Thames, providing a picturesque backdrop for leisurely strolls and recreational activities.

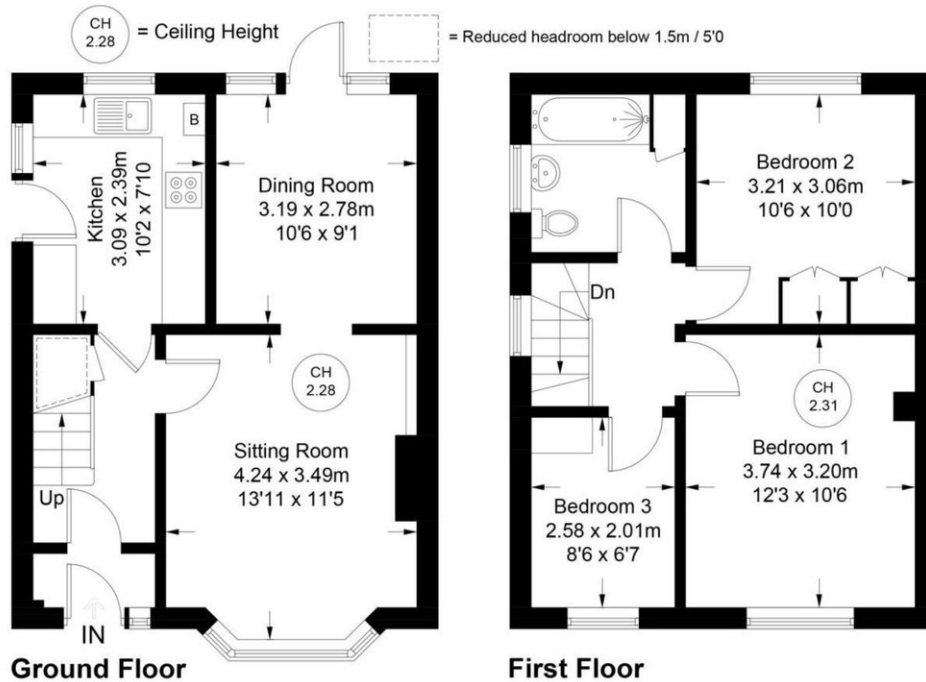
Commute with ease to London, as Marlow enjoys excellent transport links, making it an ideal location for professionals working in the city. The property's accessibility to major commuting routes ensures a seamless connection to London and other nearby destinations.

Families will appreciate the excellent schooling options in Marlow, with a range of reputable primary and secondary schools nearby. The commitment to education excellence adds to the appeal of this property for those with growing families.



BARNHILL ROAD

Approximate Gross Internal Area
 Ground Floor = 39.5 sq m / 425 sq ft
 First Floor = 38.2 sq m / 411 sq ft
 Total = 77.7 sq m / 836 sq ft



Floor Plan produced for Kingshills by Media Arcade Ltd ©.
 Illustration for identification purposes only. Window and door openings are approximate. Whilst every attempt is made to assure accuracy in the preparation of this plan, please check all dimensions, shapes and compass bearings before making any decisions reliant upon them.

David Pering and Susan Allen
 Kingshills Partners
 Covering Marlow, Bourne End
 Maidenhead and Surrounds

Agents Note: Whilst every care has been taken to prepare these particulars, they are for guidance purposes only. All measurements are for general guidance purposes only and whilst every care has been taken to ensure accuracy, they should not be relied upon and potential buyers/tenants are advised to recheck the measurements