



Roy Grove, TW12

£820,000

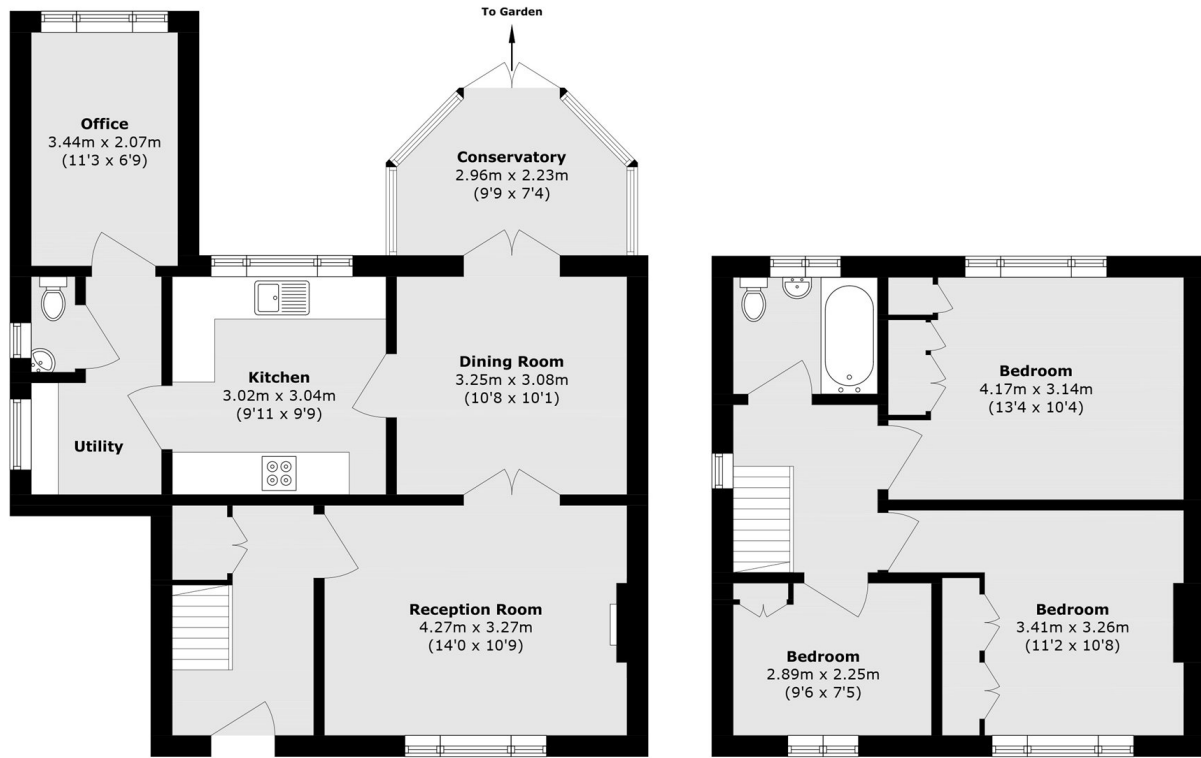
Houses on this road rarely come to market - a three/four bedroom house that is lovely and bright throughout. One of the major stand out features is the large wrap around garden, surrounded by green spaces - something really quite special.

Roy Grove is a cul-de-sac with a real sense of community, benefitting from the local schools, both state and private. Hampton Village, Hampton train station, Bushy Park and Hampton Hill High Street are all nearby.

Features

- Semi Detached
- Three/Four Bedrooms
- Wide Garden
- Off Street Parking
- Scope To Extend (STPP)
- Cul-de-sac

Roy Grove, Hampton, TW12



Ground Floor

First Floor

Total area (approx.): 102.3 sq. m (1101.2 sq. ft)